

# CABG patient: failed retrograde approach rotablation of the vein graft

- A. Zebrauskaite

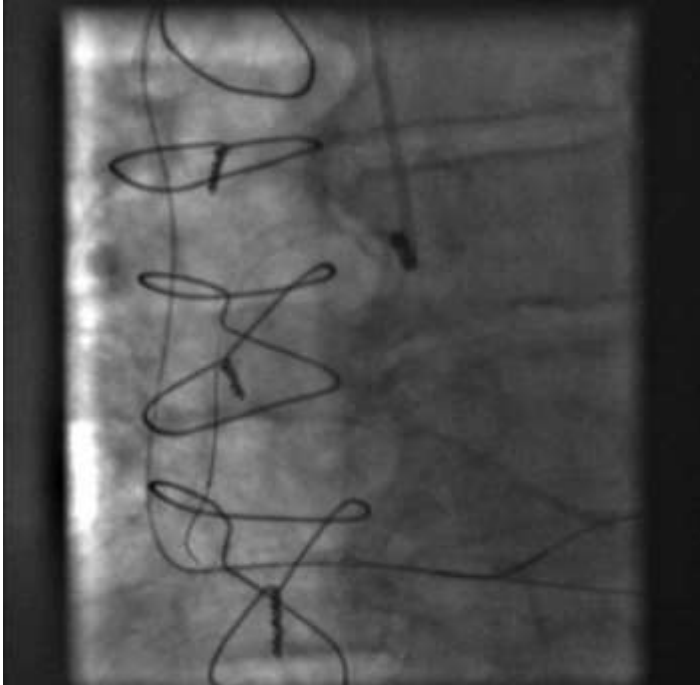
# Patient presentation:

- A 72 year old patient with a history of CABG in 2006; 2004, 2006 anterior STEMI
- Presented with acute inferior STEMI in March 2024
- Comorbidities: AH, CCF (LV EF 35%), AH, Diabetes, dyslipidaemia
- Diagnostic angiogram revealed CTO of RCA and occlusion of VG to RCA. LIMA – patient.
- PPCI to the VG to RCA – failed – high pressure NC balloon dilatation was not successful to predilate calcified stenosis of the VG. TIMI 2-3 restored by balloon angioplasty
- The patient discussed in the heart team – CTO PCI of RCA recommended.

# Plan of the CTO procedure

- As TIMI flow via the VG to RCA was restored, the retrograde CTO PCI of RCA was planned.

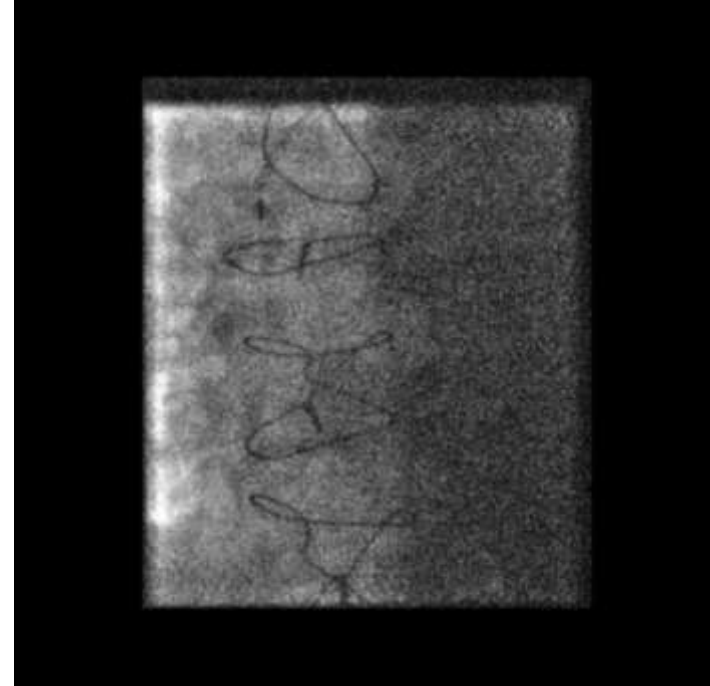
# Retro-CTO



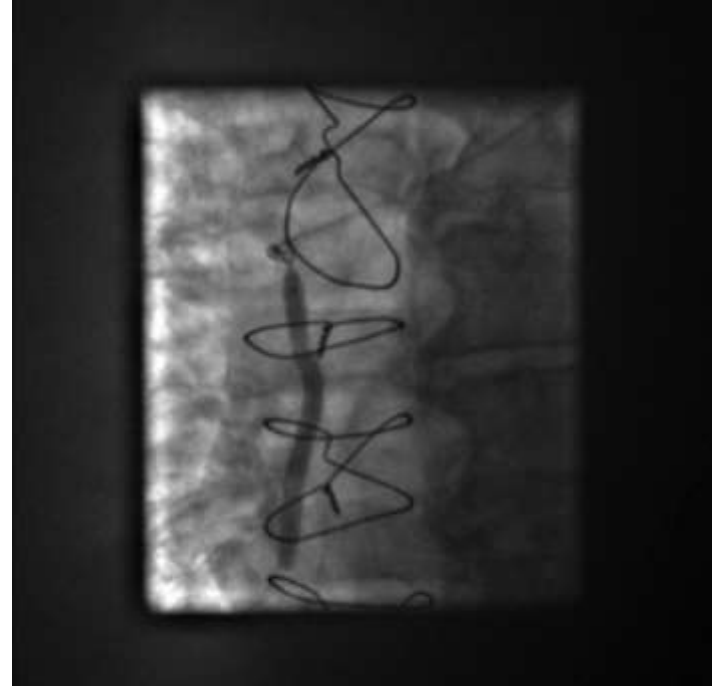
- Retrograde approach:
  - MC Corsair Pro: Gladius EX14, Gaia 3rd, Hornet
  - Failed to cross
  - Failed to form subintimal nuckle
- Antegrade approach:
  - MC Corsair Pro: Gladius EX14, Gaia 3rd, Hornet
  - Failed to cross
  - Failed to form subintimal nuckle

# Further strategy?

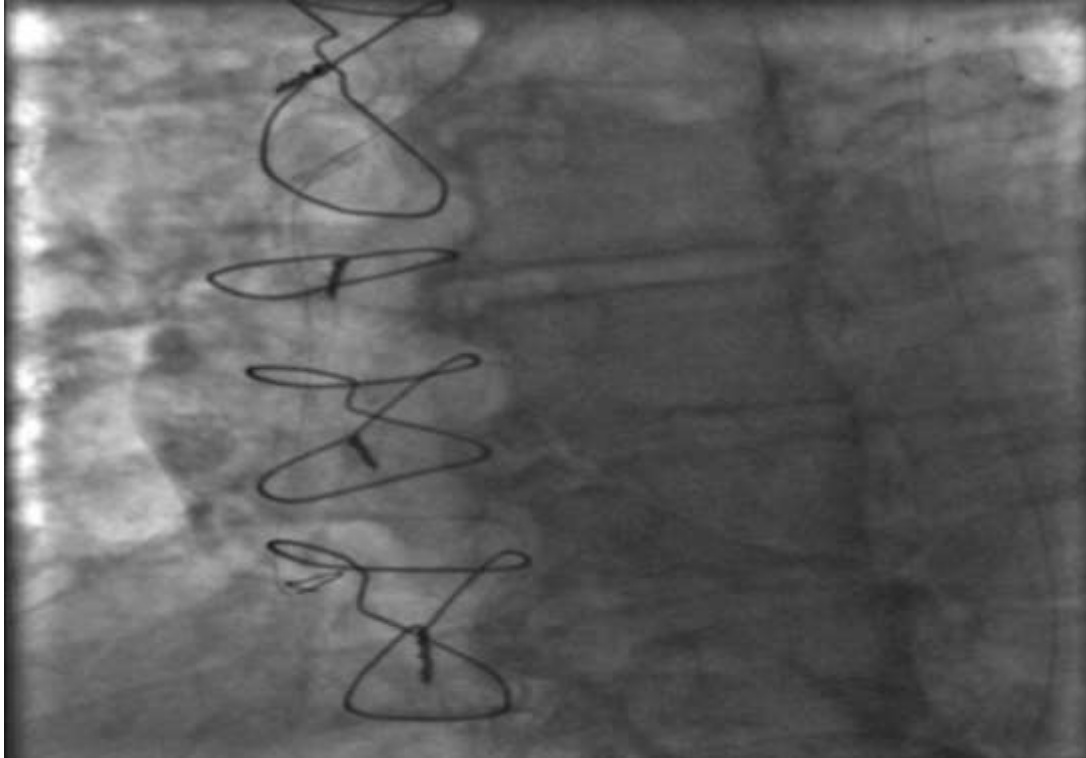
- Previous PTCA with OPN failed



# Further strategy?



# Final result



# Discussion:

- Saphenous vein graft lesion -  
contraindication for rotational  
atherectomy...

