

Double CTO PCI- Ad Hoc Antegrade and Retrograde Staged Procedures

Hillel Yaffe Medical Center
Hadera- Israel

Rami Abu Fanne M.D., Ph.D., MHM
Head of CHIP program



CASE

PRESENTATION



Age (years): 78

Gender: Male

BMI: 30

Clinical Presentation

CCSII and NYHAI symptoms

Progressive symptoms for the last 6 months

Optimized on GDMT

Co-morbidities

HTN

Diabetes type II: neuropathy

Hyperlipidemia

Medical History

PCI to proximal LCX- 2005

PCI to Distal RCA- 2008

Lab tests

CBC- normal

Creatinine- normal

CASE PRESENTATION



Age (years): 78

Gender: Male

BMI: 30

Exertional breathlessness and chest discomfort

Clinical Indication and decision making

CCS II

SPECT- inferolateral ischemia > 15%

Echocardiogram- Inferolateral hypokinesia

Angiography

- proximal LAD lesion 40%
- Proximal LCX CTO
- Proximal RCA CTO

JCTO score

RCA – 3

LCX- 2

Procedural Strategy

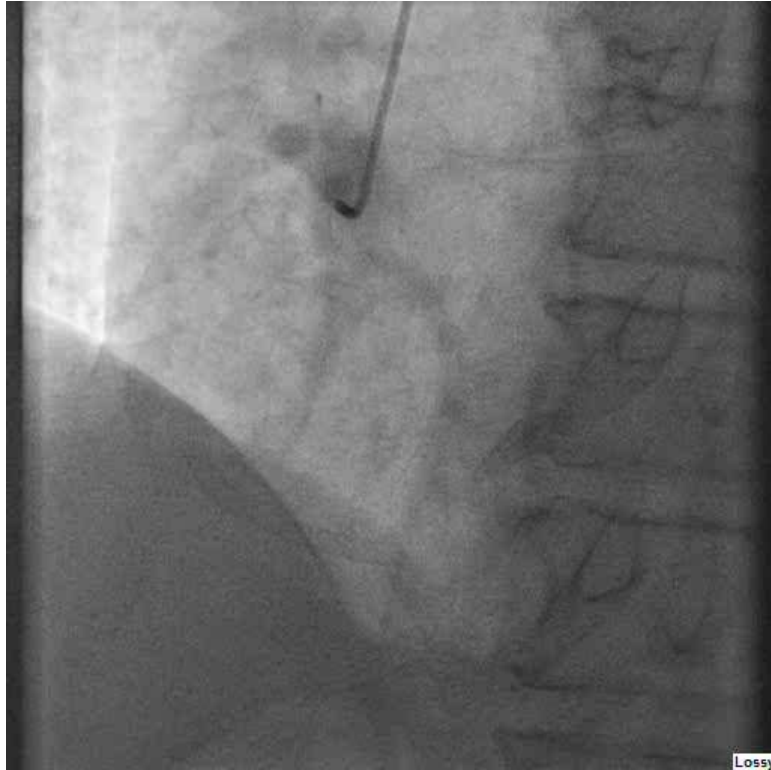
1. Ad-Hoc CTO-PCI to LCX-
Single catheter, RR, EBU 3.5, 6F.
2. Staged PCI to RCA-
Dual access.

1) Ad Hoc CTO PCI of LCX

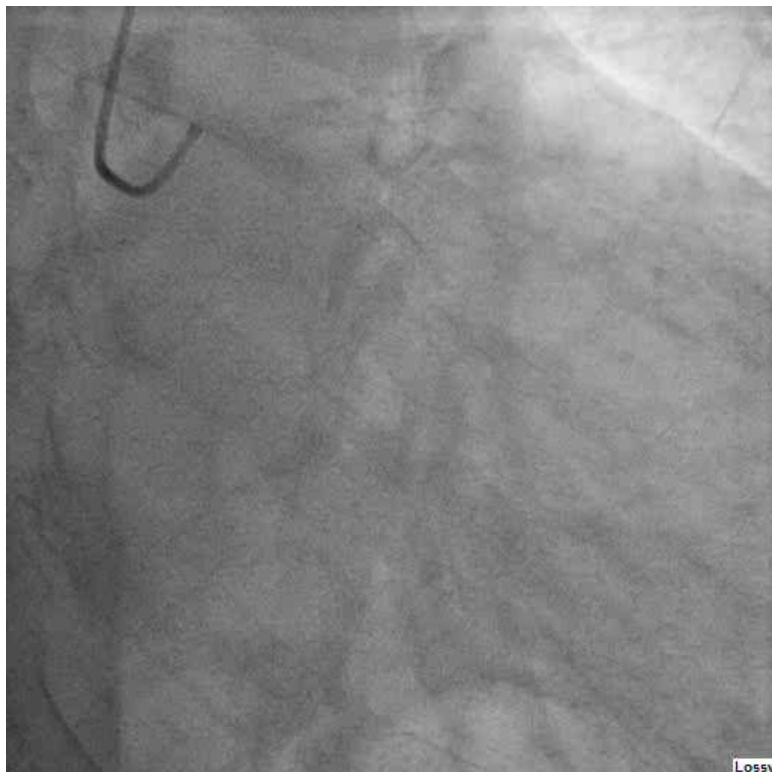
- *Single GC- EBU 3.5, 6F*
- *Over the Wire Balloon- 1.25X15mm*
- *PILOT 200 → Miracle 6*

Coating	Hydrophilic
Brand	Abbott
Outside Diameter	0.014 Inch
Tip Style	Core To Tip
Tip Load	4.1 g

Tip Load	3gf / 9gf / 12gf
Tip Shape	Straight
Radiopaque Length	11cm
Coating	Silicone
Usable Length	180cm
Structure	



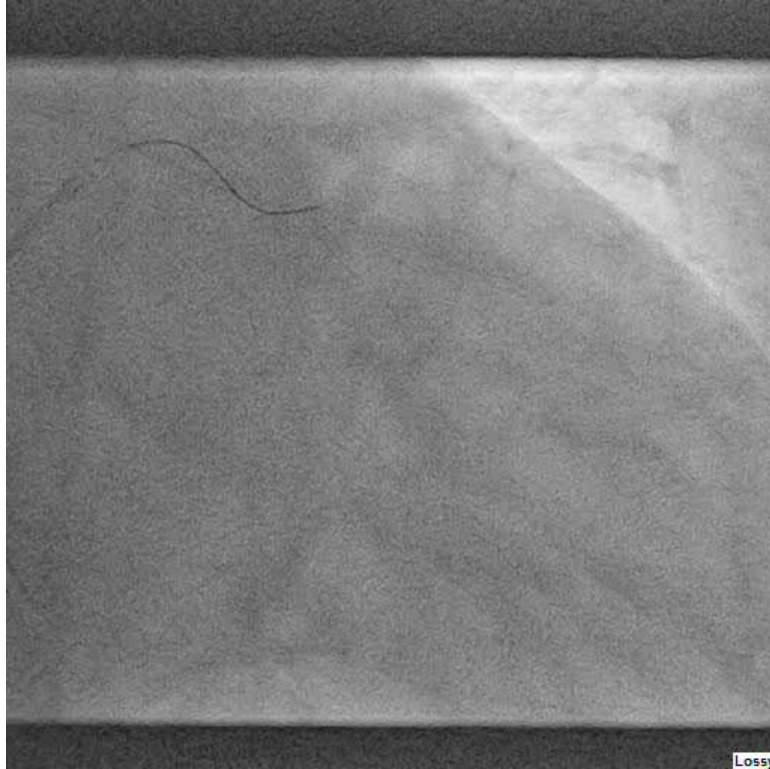
Lossy



Lossy

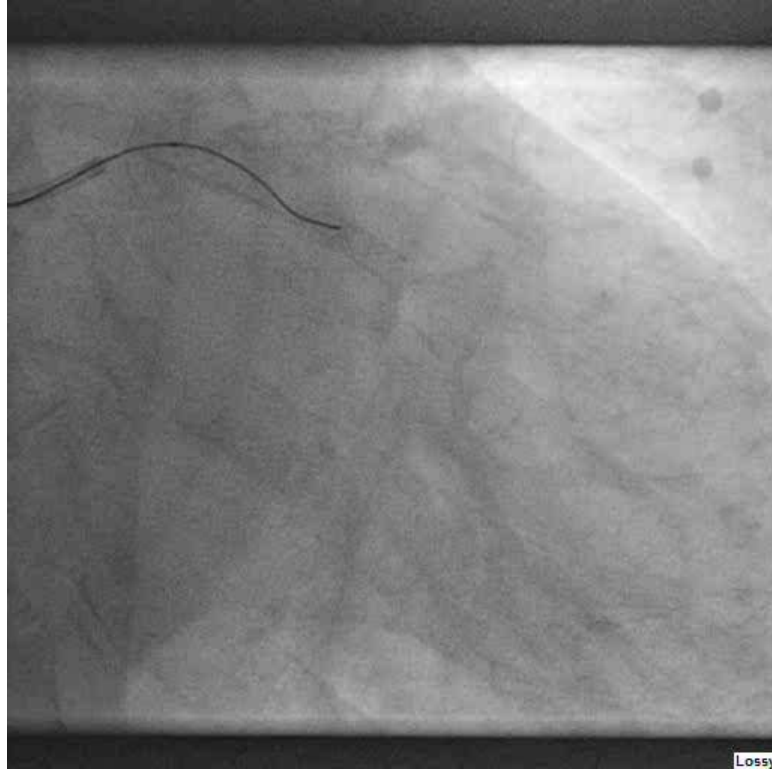


Lossy



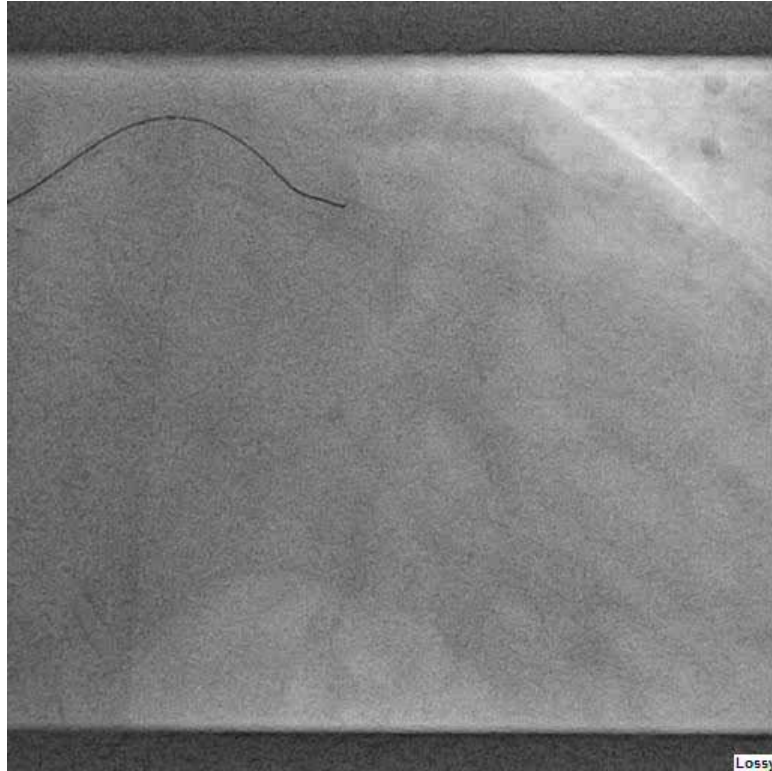
Lossy

PILOT 200

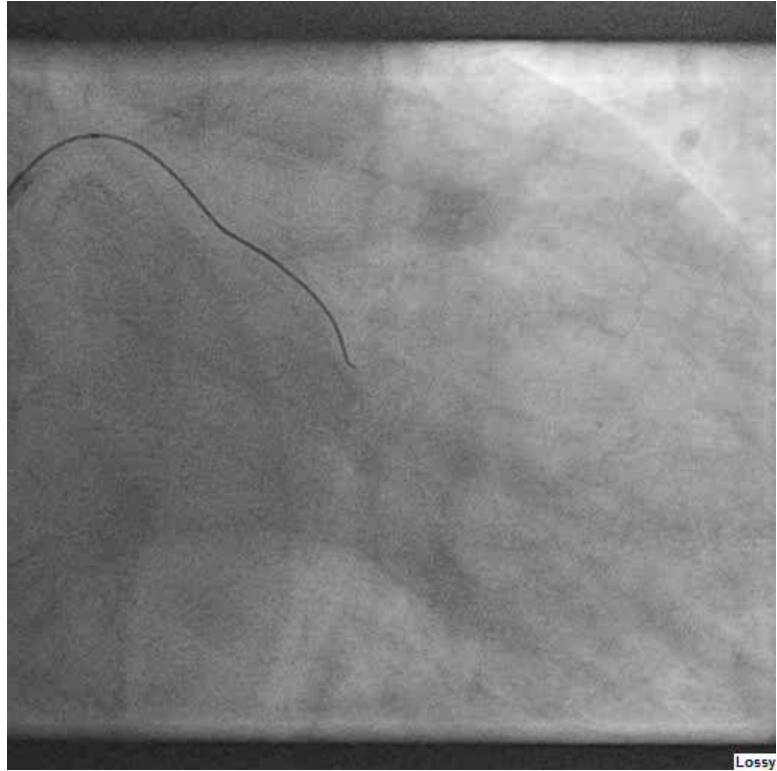


Lossy

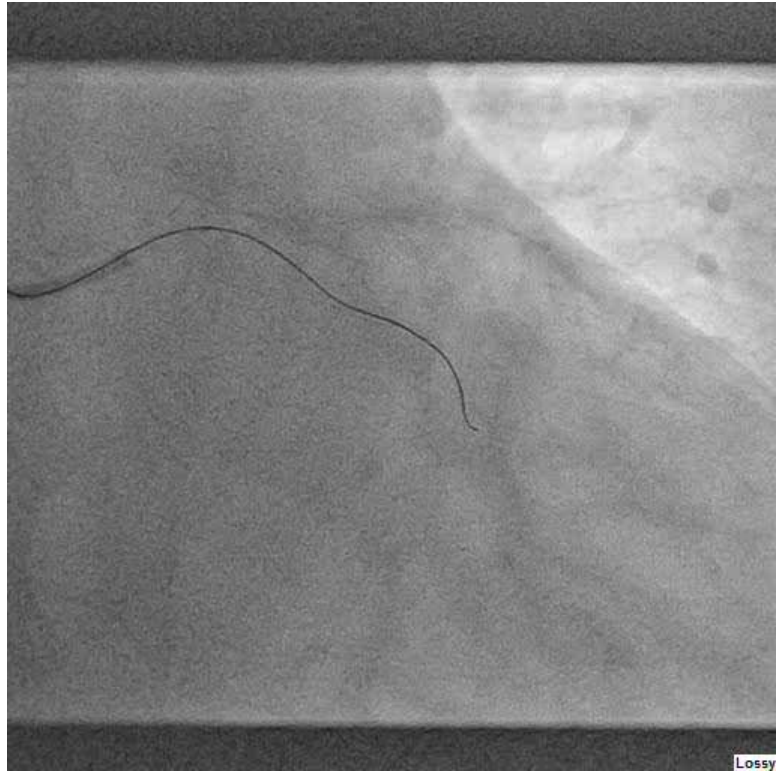
Miracle 6



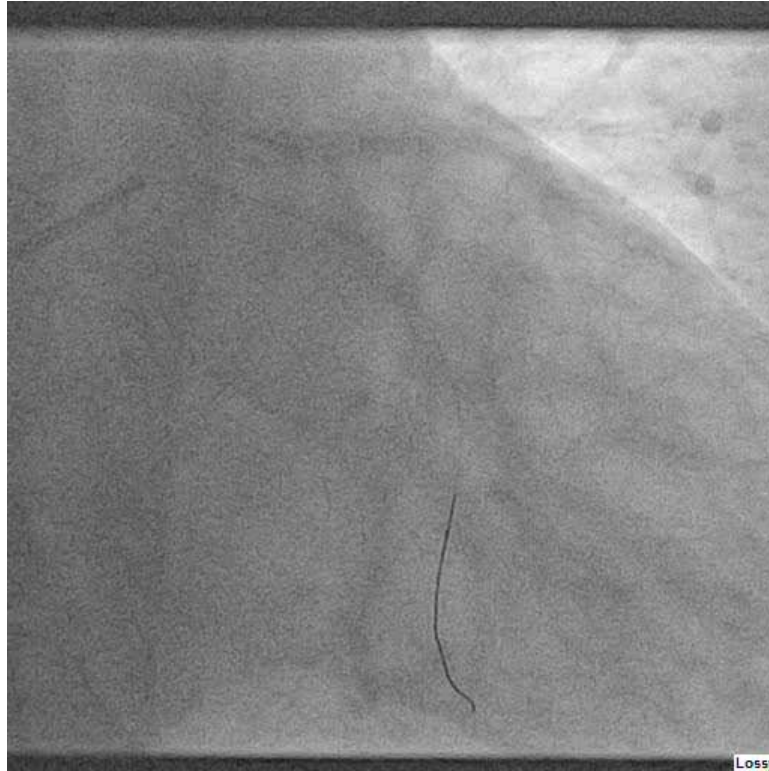
Lossy



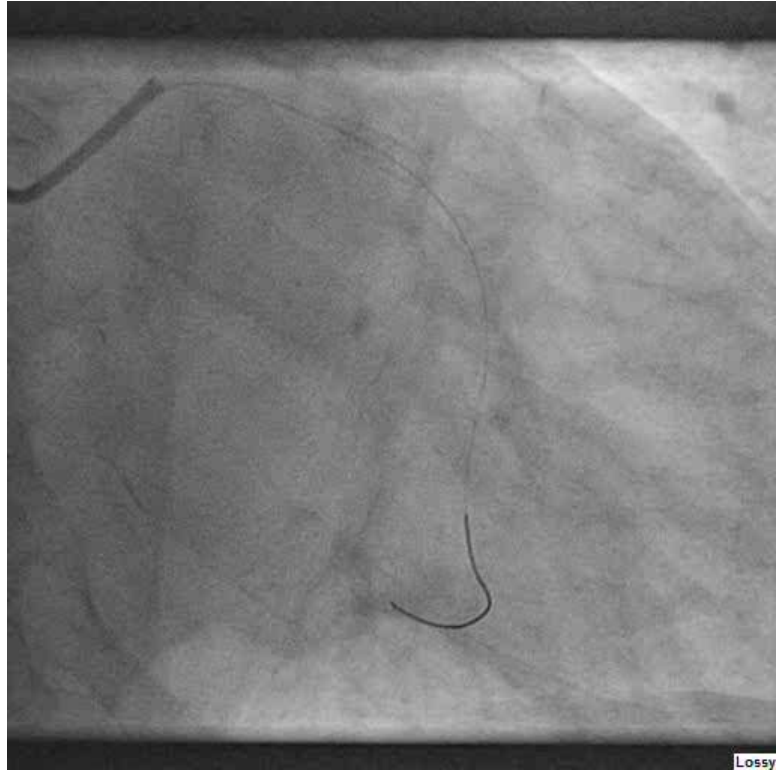
Lossy



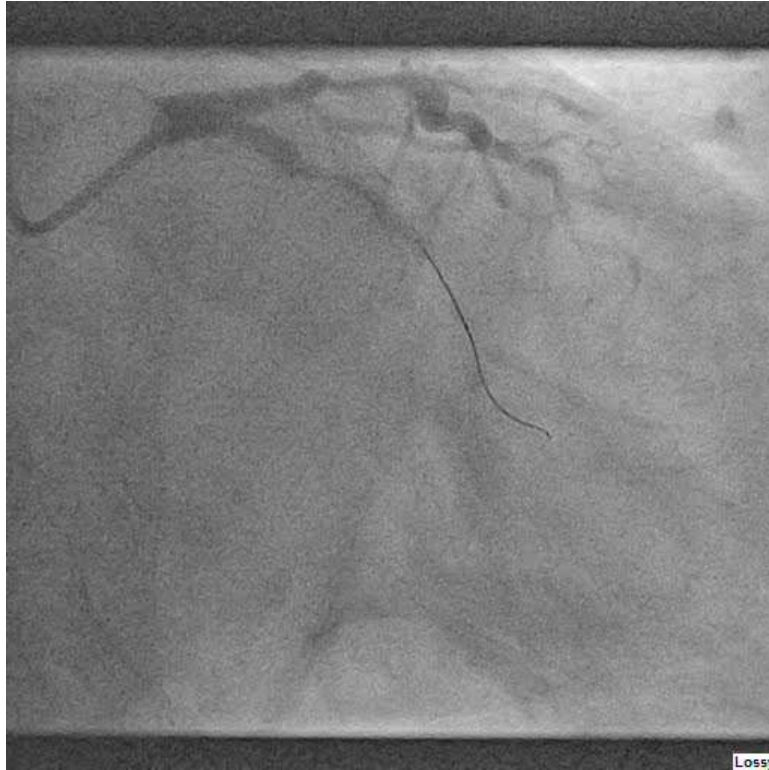
Lossy



After Miracle cross
deescalating to soft wire

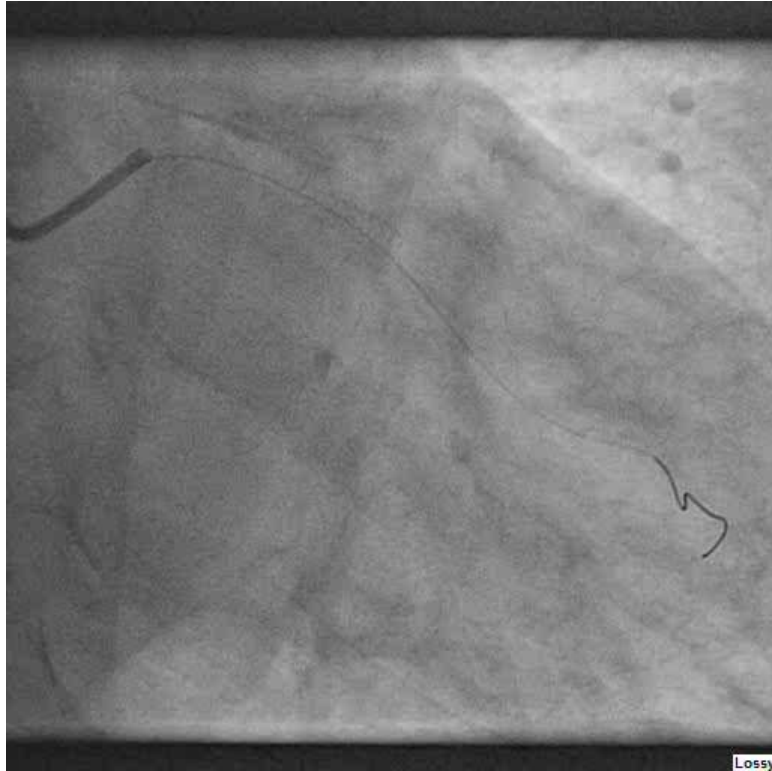


Lossy

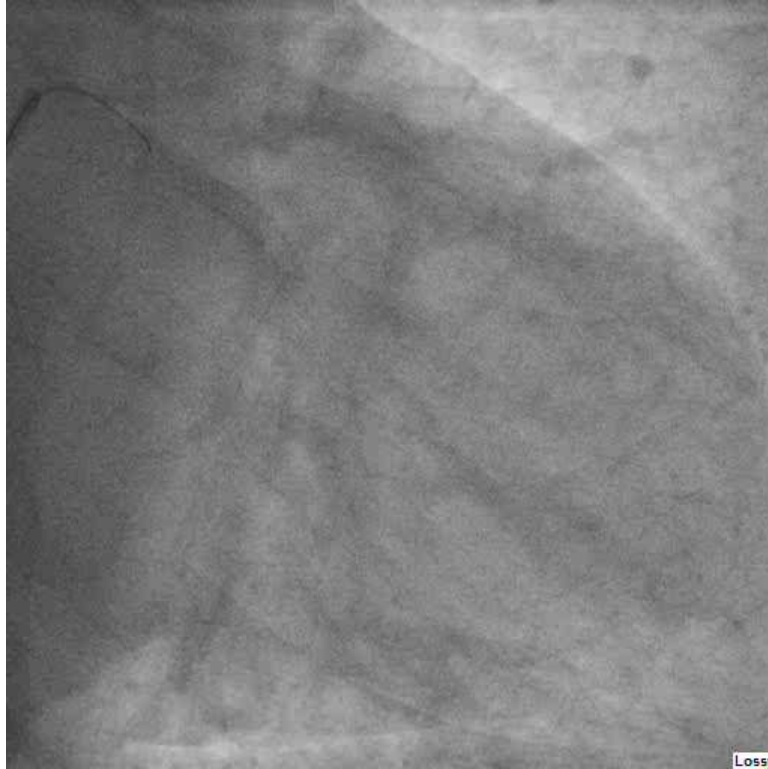


Wiring the main
marginal

Lossy



Lossy



Post stenting

2) Staged CTO PCI of RCA

- Dual injection GC- R. Femoral: EBU 3.5, 7F | R Radial: AL0.75, 6F
- MC- Corsair pro 150cm
- Sion wire → SUOH 03 wire → GAIA 2

Tapered soft tip Tapering to 0.42mm (1.3Fr) + High visibility

- High visibility at the lesion part
- High tracking ability into the lesion
- Entire tip is visible under fluoroscope



ASAHI Corsair Pro
Microcatheter

Structure & ordering information



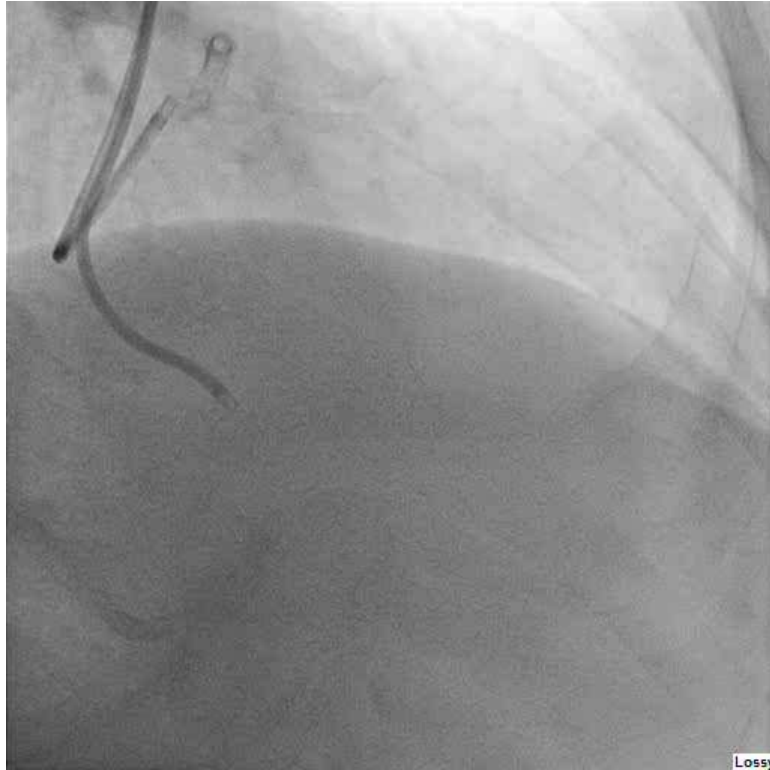
Product	Cataling No.	Outer diameter			Inner diameter		Usable length	Recommended IDW
		Tip	Distal shaft	Proximal shaft	Tip	Shaft		
ASAHI Corsair Pro	CSR135-26P	0.42mm (1.3Fr)	0.87mm (2.6Fr)	0.93mm (2.8Fr)	0.38mm (0.015inch)	0.45mm (0.018inch)	135cm	0.36mm (0.014inch)
	CSR150-26P	0.42mm (1.3Fr)	0.87mm (2.6Fr)	0.93mm (2.8Fr)	0.38mm (0.015inch)	0.45mm (0.018inch)	150cm	0.36mm (0.014inch)

ASAHI Gaia
PTCA GUIDE WIRE

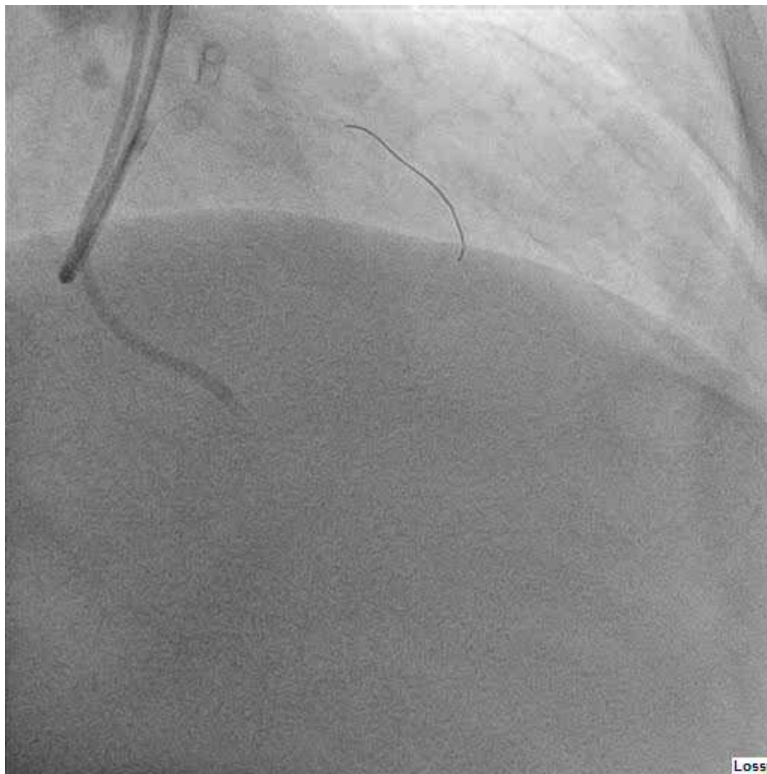


Not difficult but different

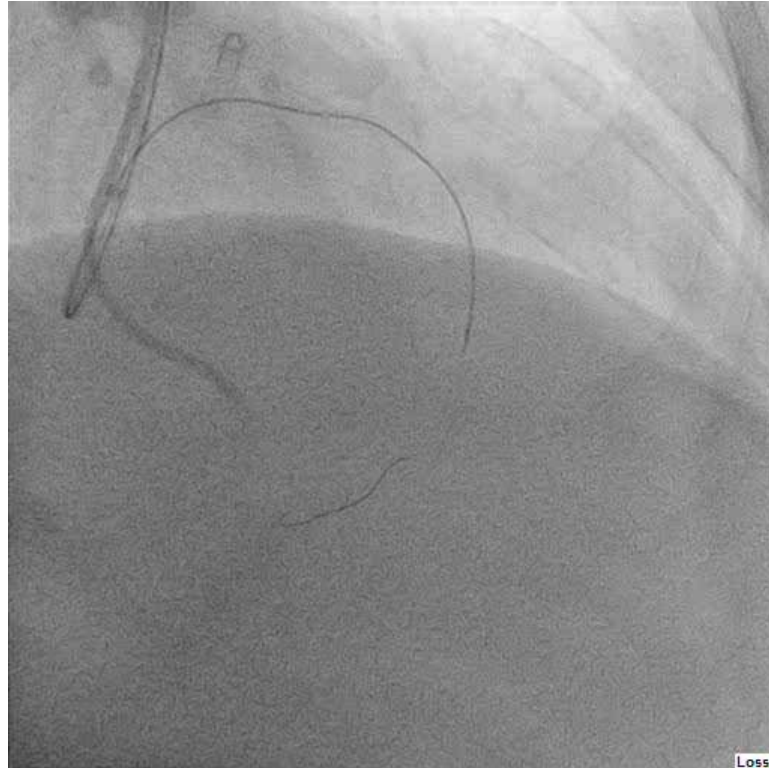




Lossy

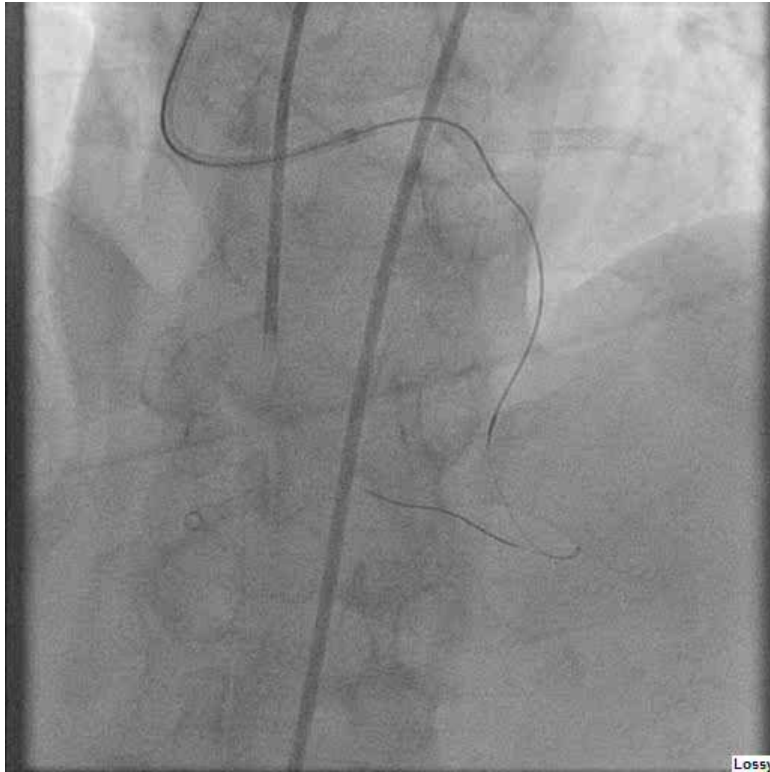


Septal surfing with sion wire

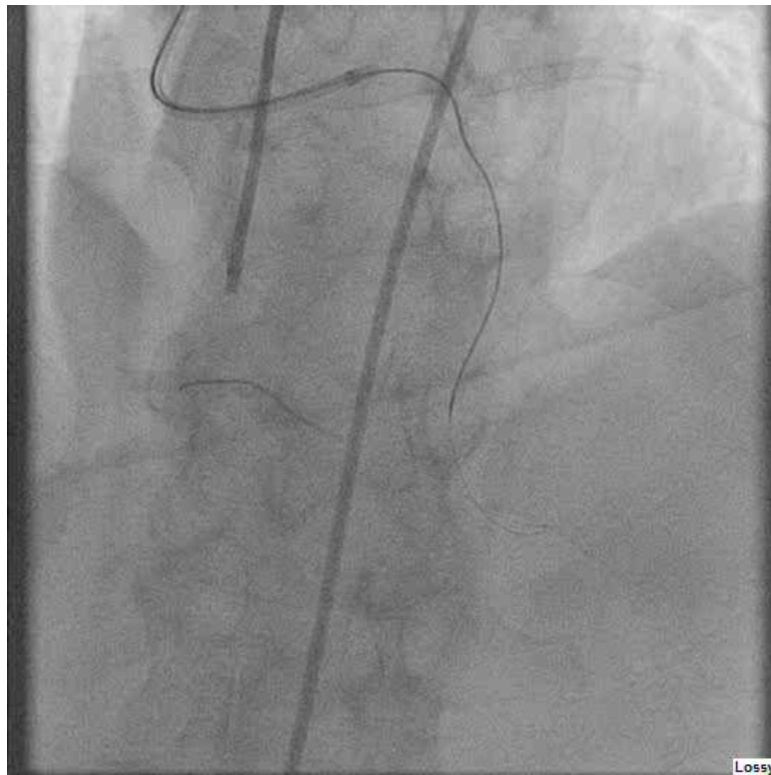


De-escalation to *SUOH*
03 wire

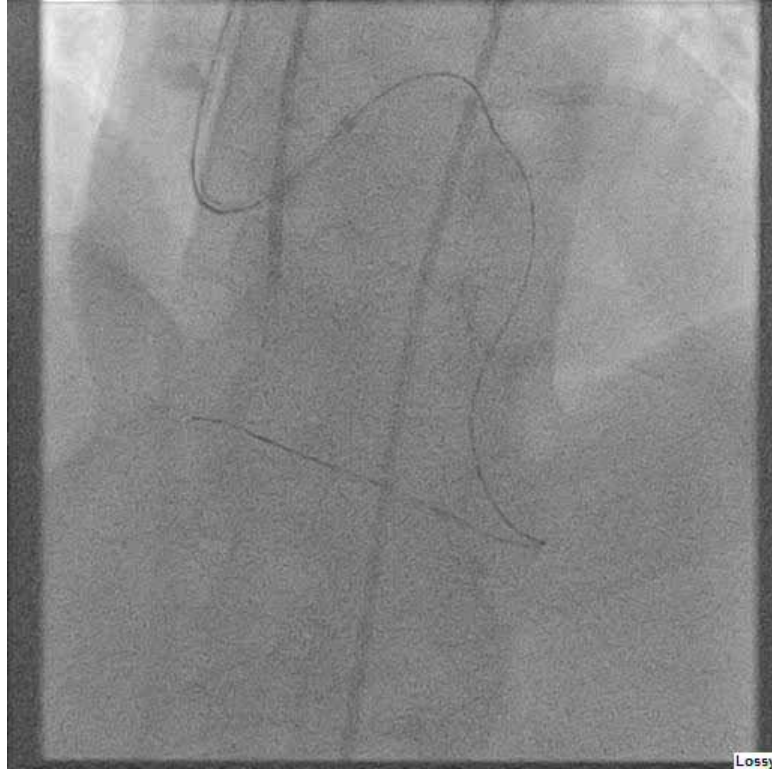
Lossy



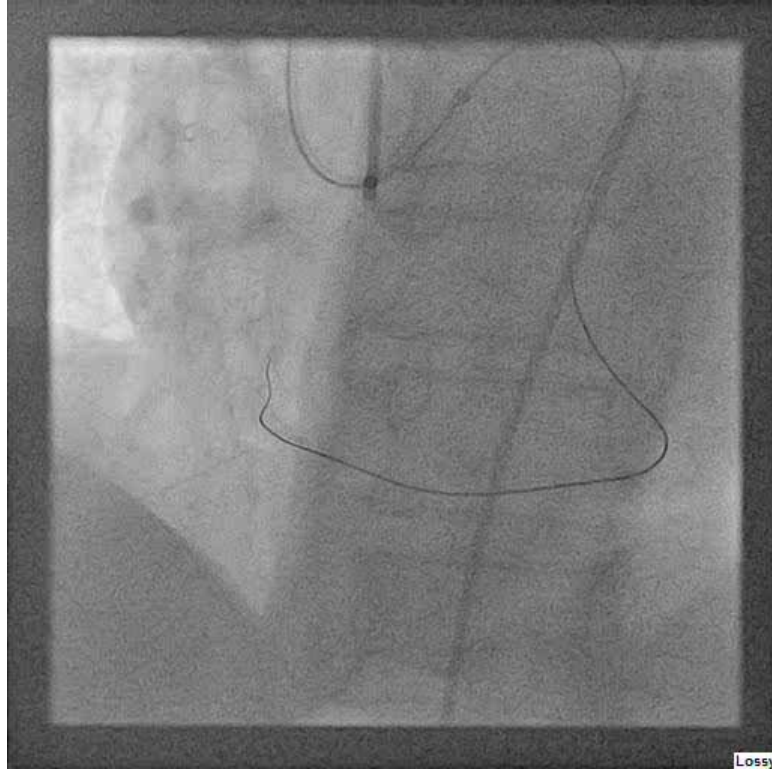
Lossy



Lossy

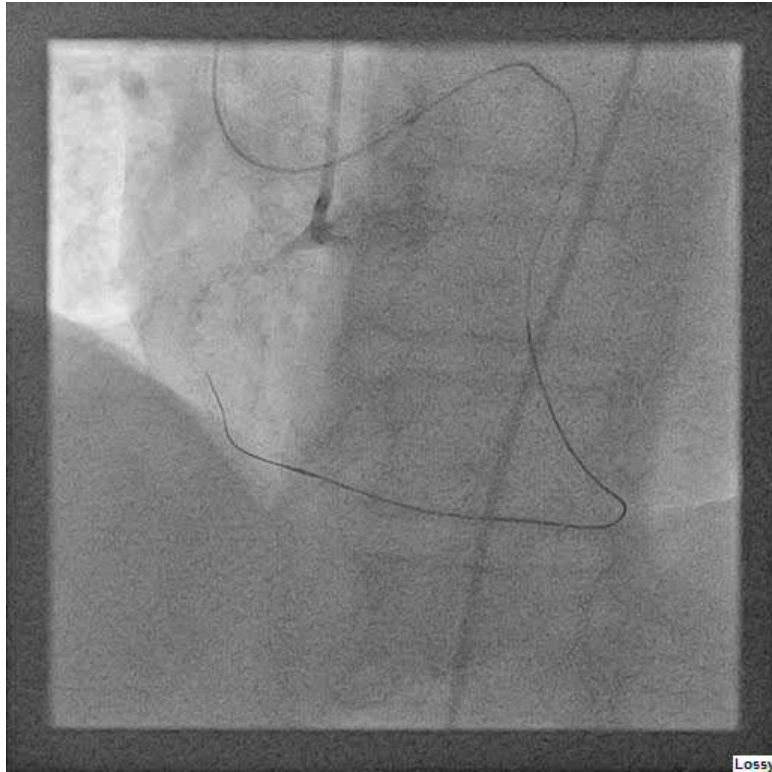


Lossy

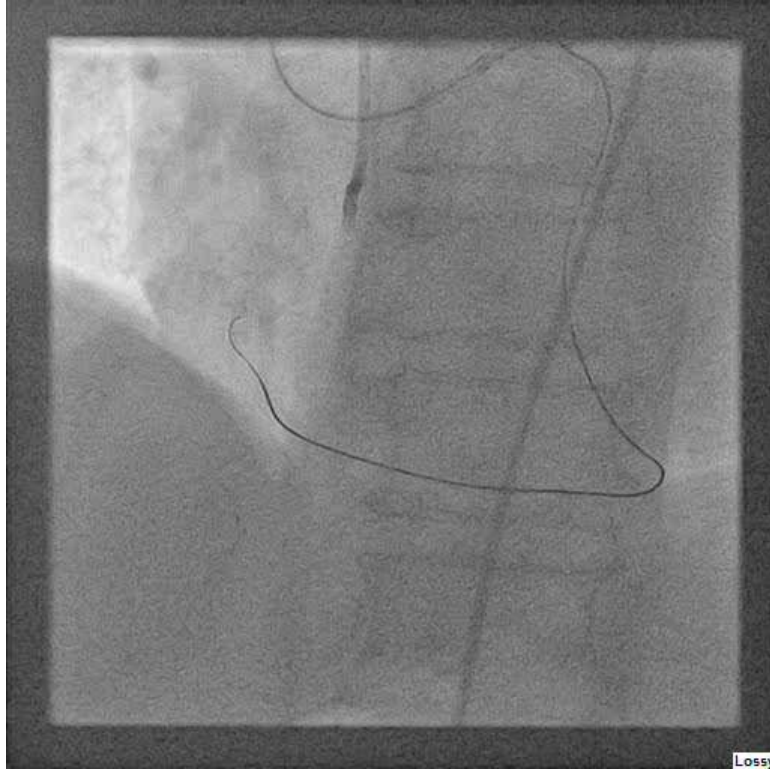


Lossy

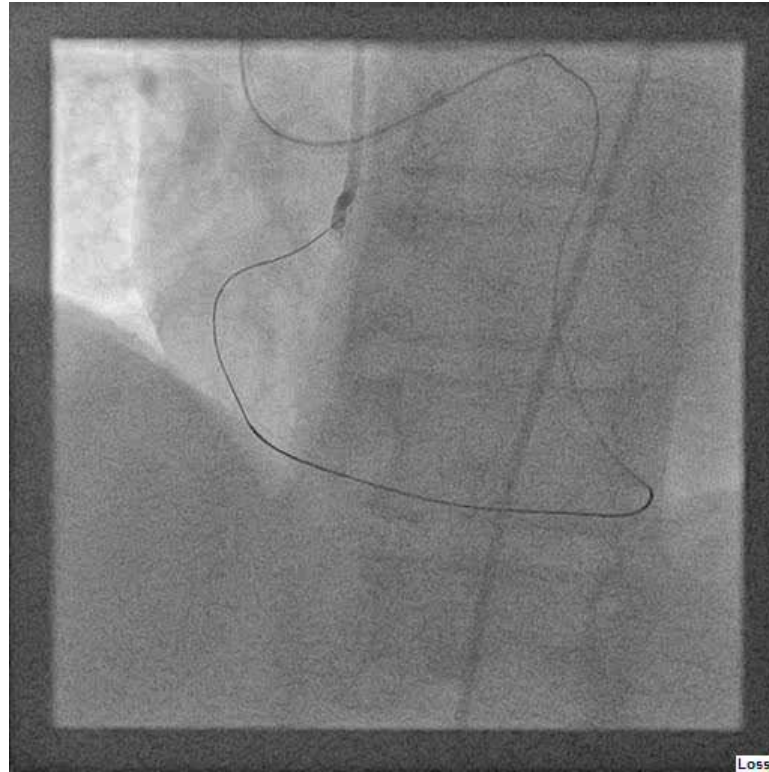
Escalation to *GAIA-2 wire*



Lossy

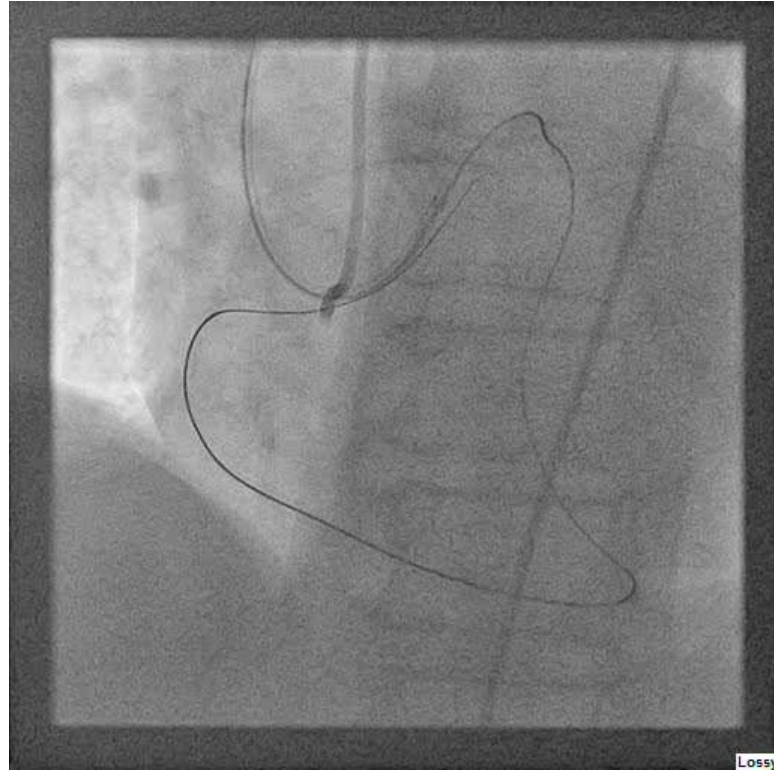


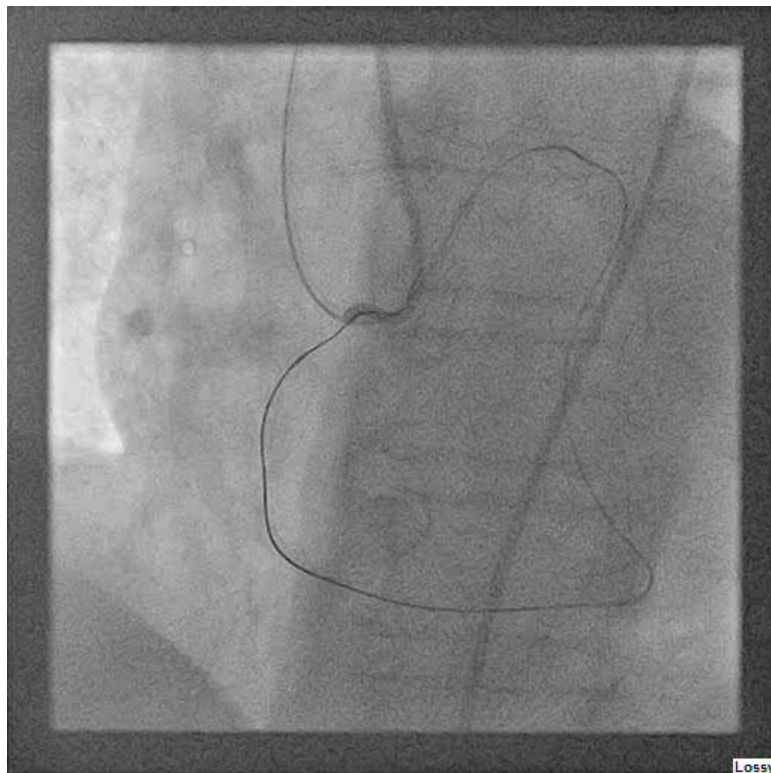
Lossy



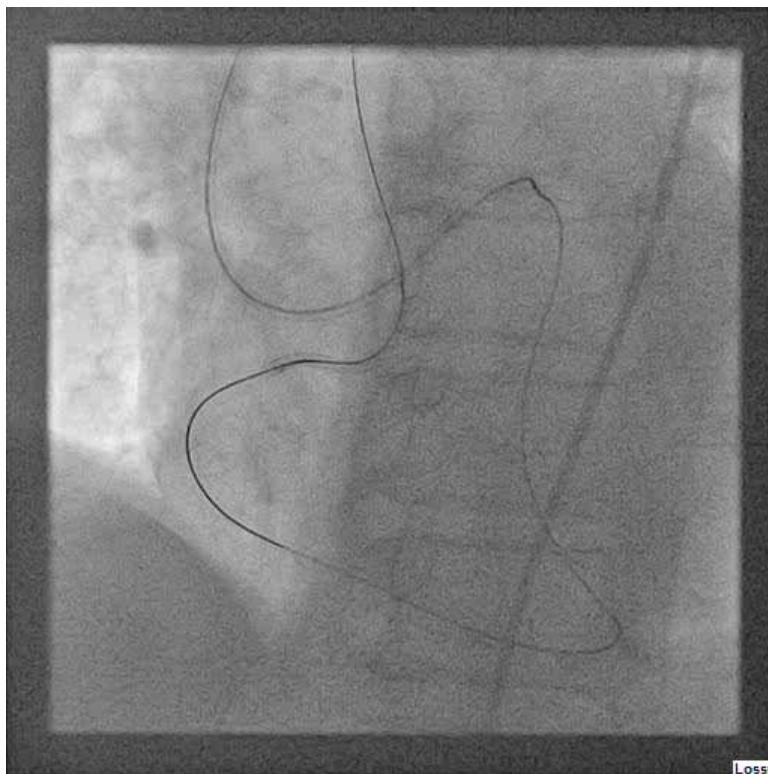
GAIA 2 successful wiring
to ostial RCA

Lossy

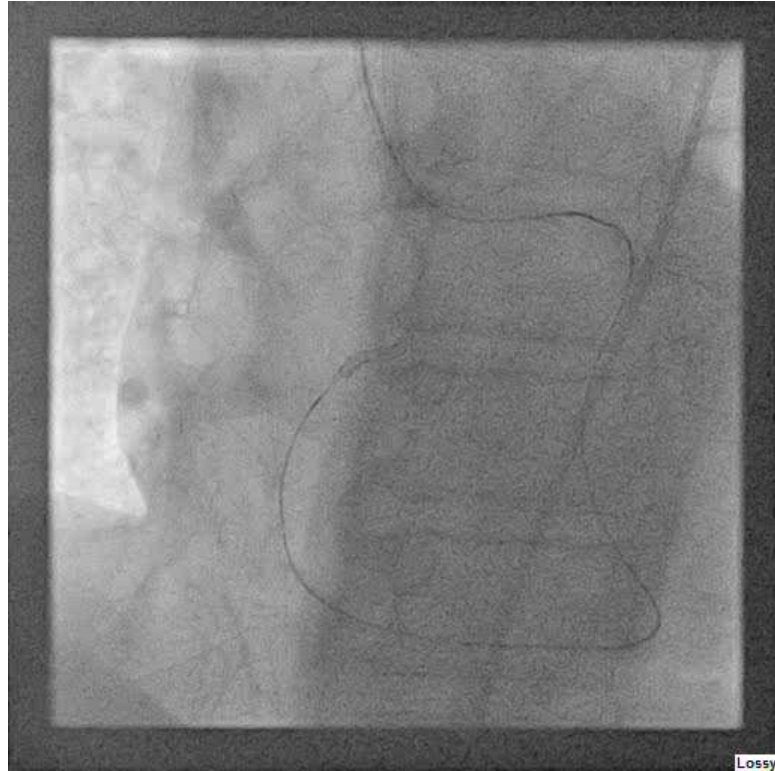




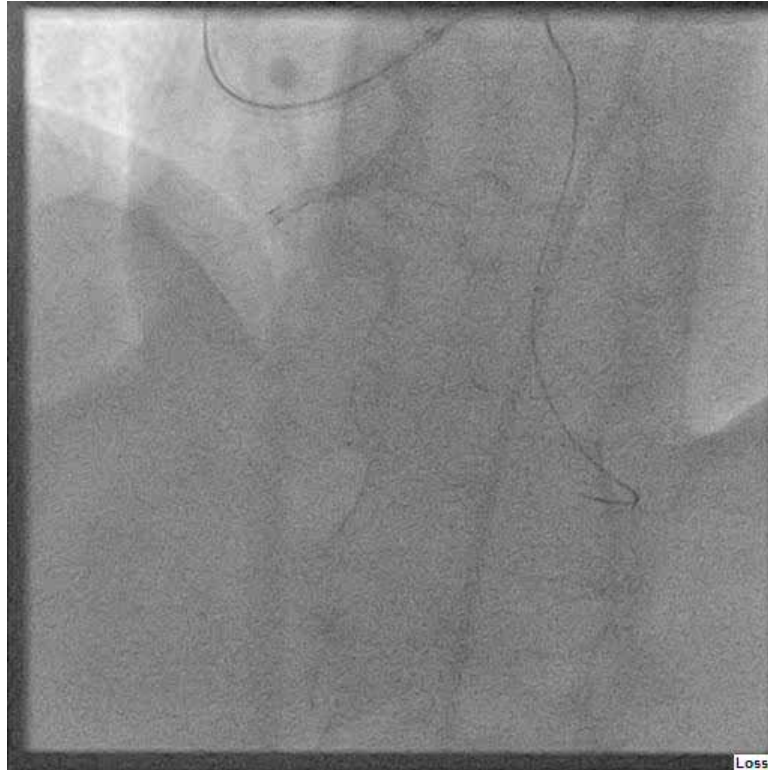
Lossy



GAIA 2 wire entering the
antegrade catheter →
trapping → mc
advancement → wire
externalization



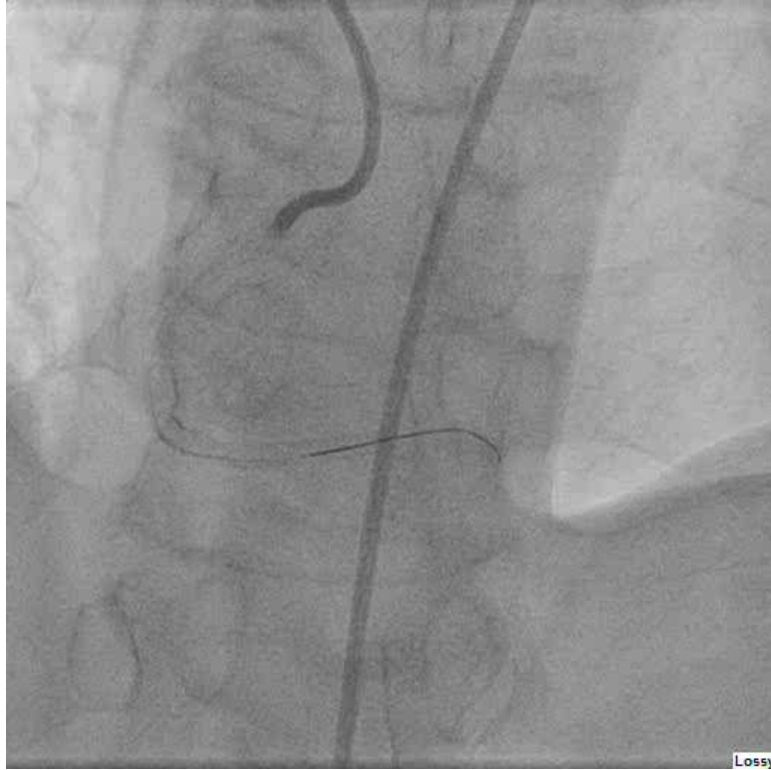
Lossy



Antegrade SASUKI MC
advancement for PLB
wiring



Successful PLB wiring



Final Result