

# Titre

- Ajouter un sous-titre



## **Complex RCA-CTO PCI: Reverse CART with a double knuckle and a Rendezvous as a Bailout technique.**

Hillel Yaffe Medical Center  
Hadera- Israel

**Rami Abu Fanne, M.D., Ph.D., MHM**

## Case 1

45 y man

NIDDM, Hyperlipidemia, smoker, HTN

Extensive anterior MI 6 months ago

EF < 30%

CTO of RCA

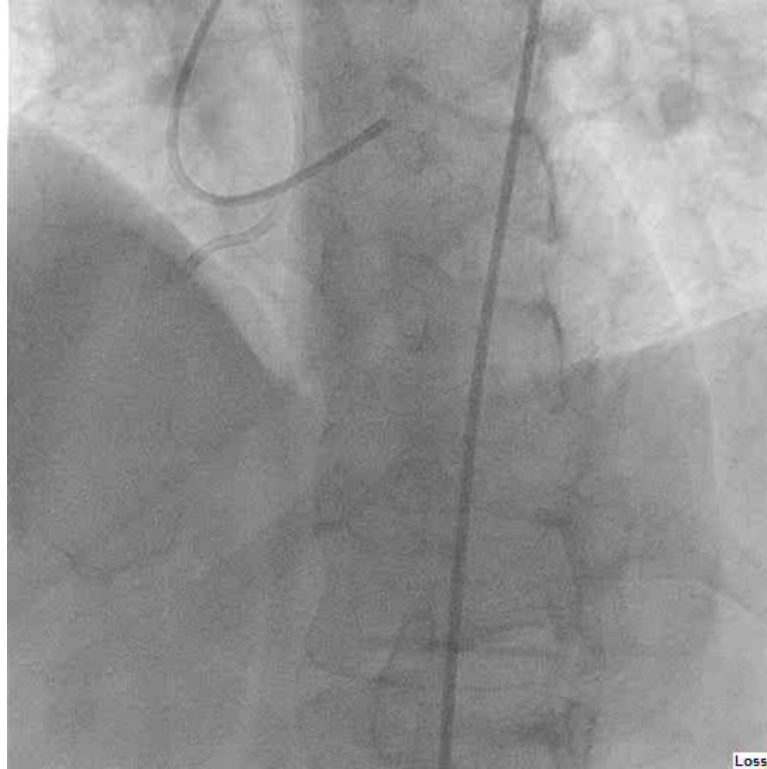
**2nd attempt**

**Indication-** angina + ischemia&viability at nuclear scan

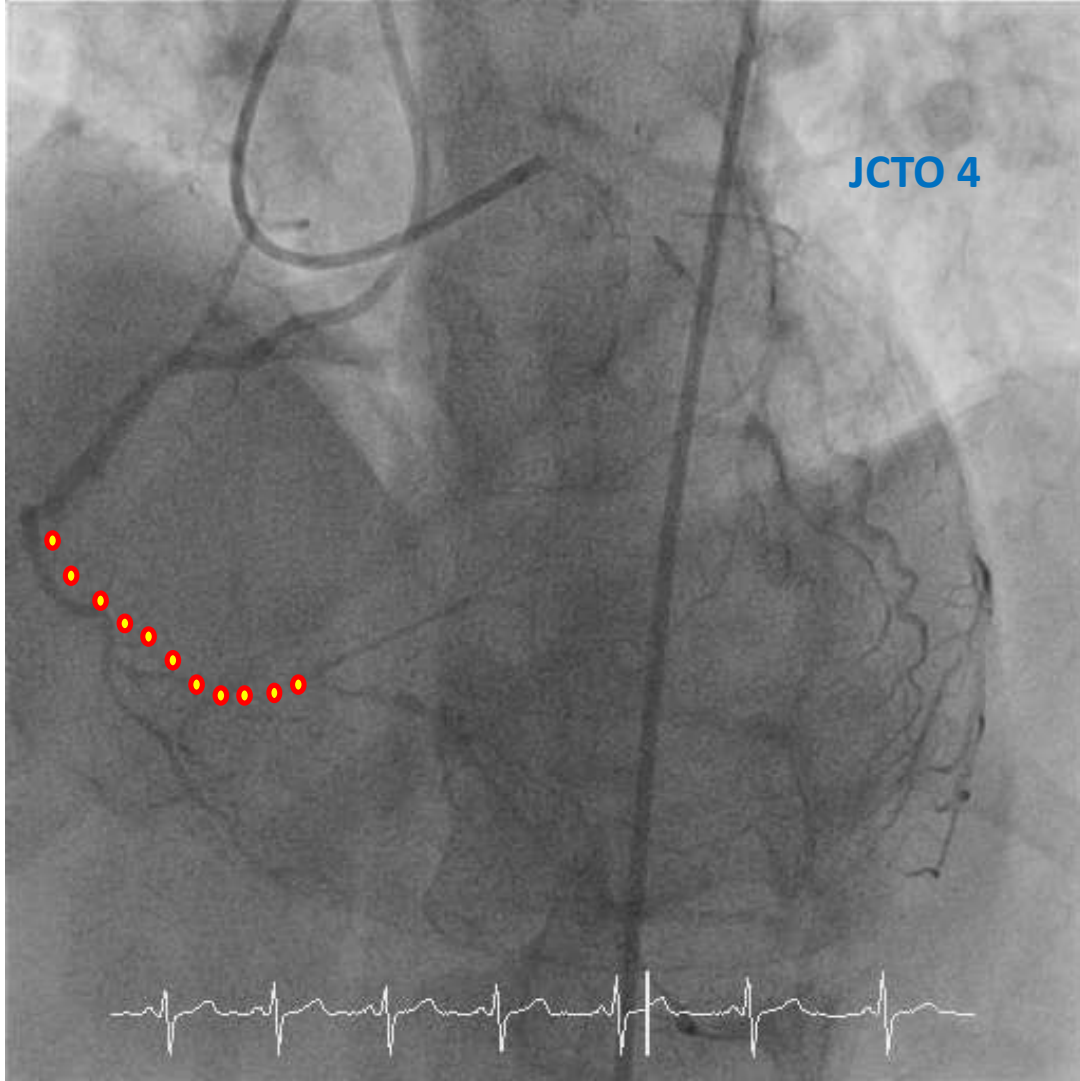
**JCTO score = 4**

RFA= AL1

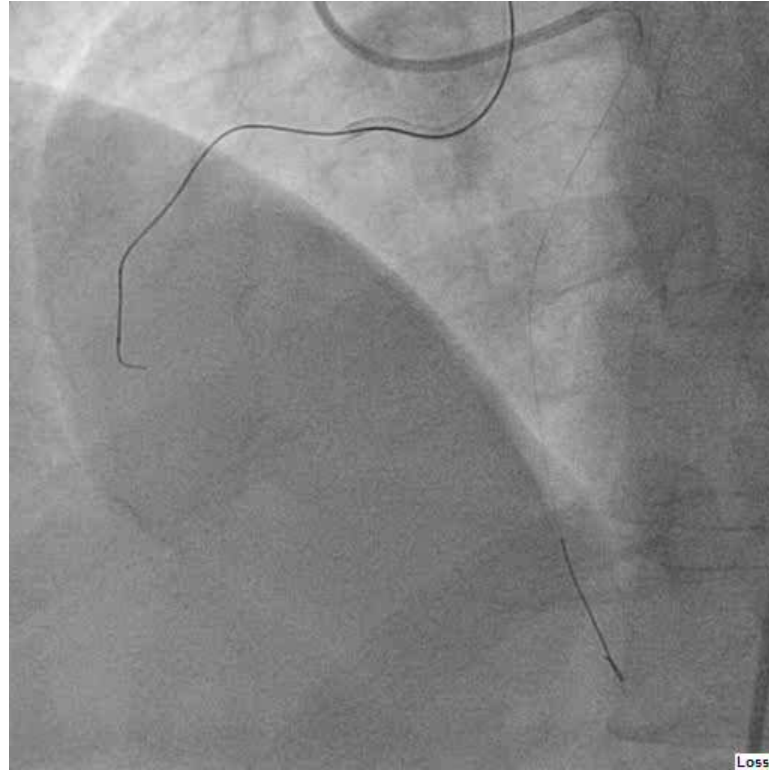
RRA= EBU 3.5



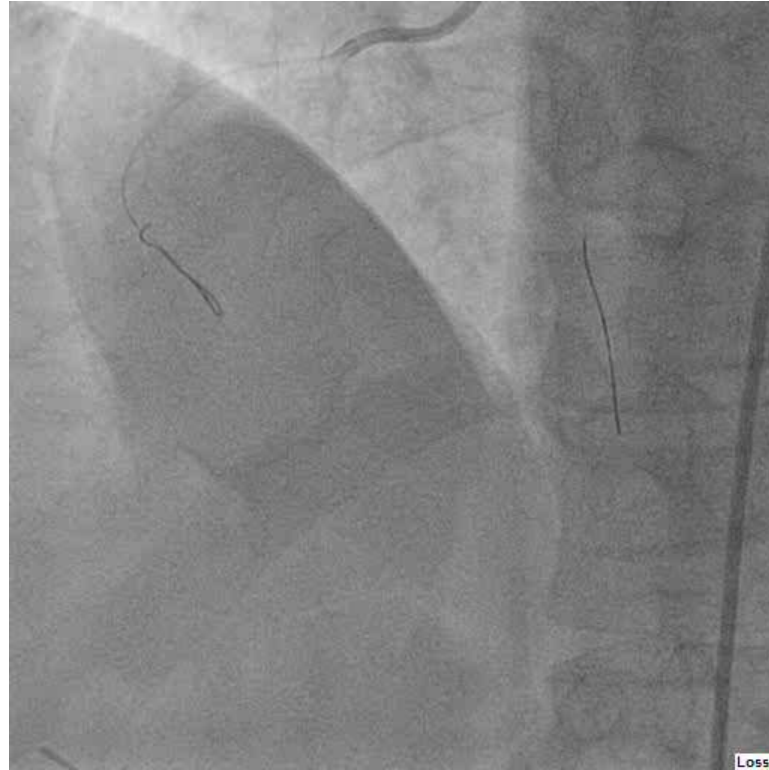
JCTO 4



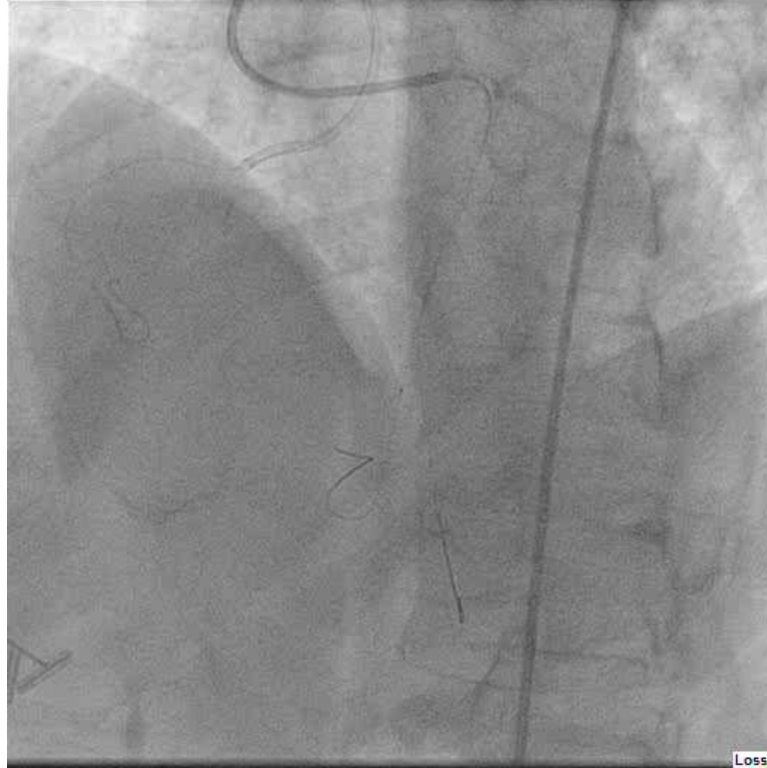
## Finecross: miracle 3, GAIA 2



## PILOT 200 Knuckle ...



## Trapping and moving Finecross for retrograde surfing

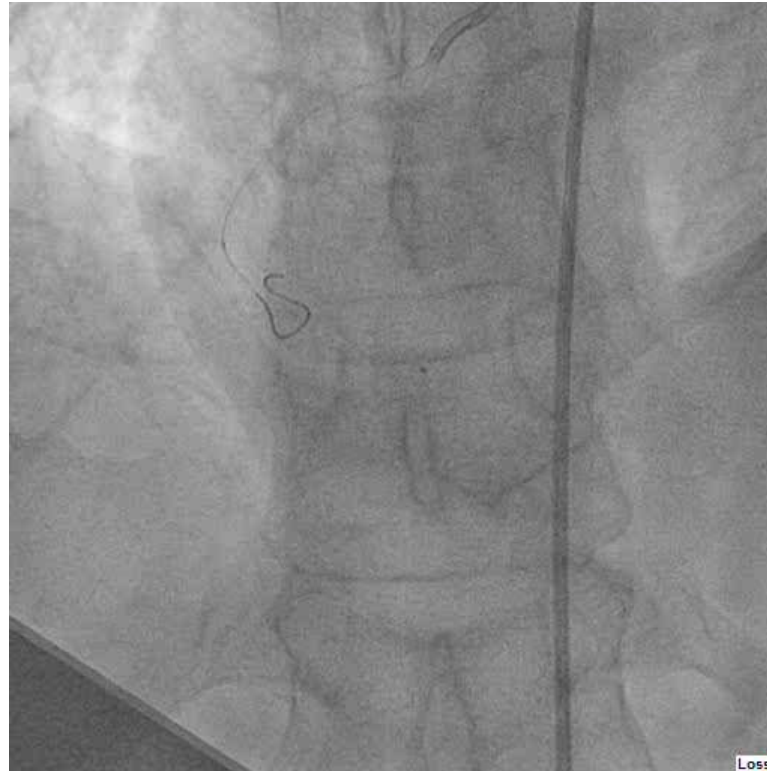




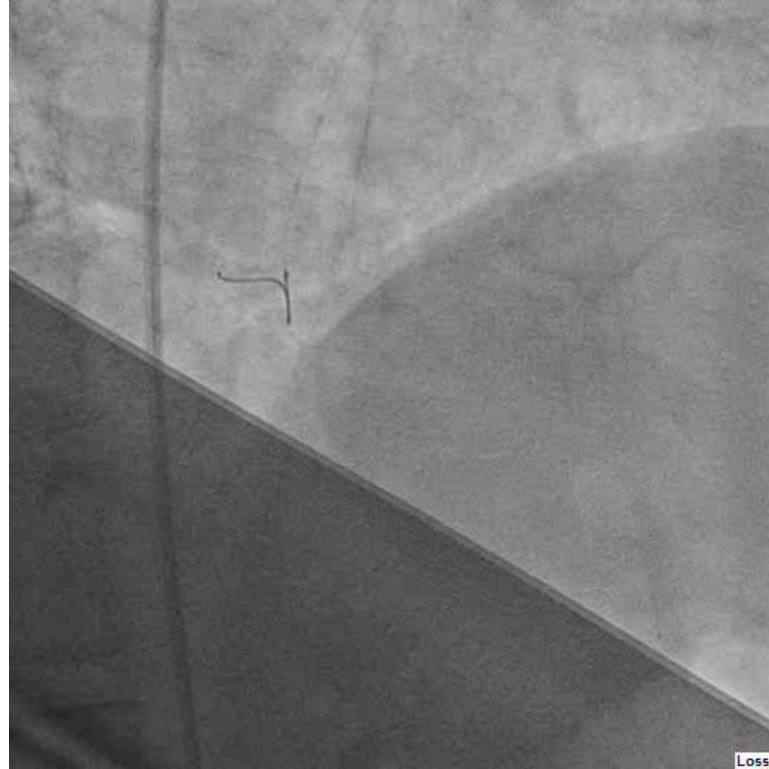
## Tip injection for crux clarification



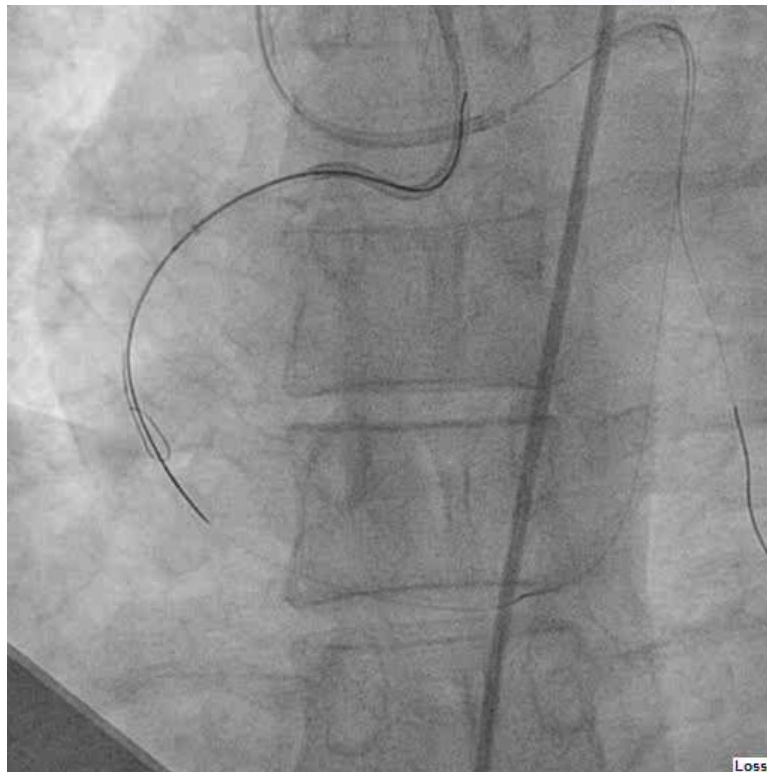
**Miracle 3 (distal cup  
puncture)→Gaia2→Pilot200**



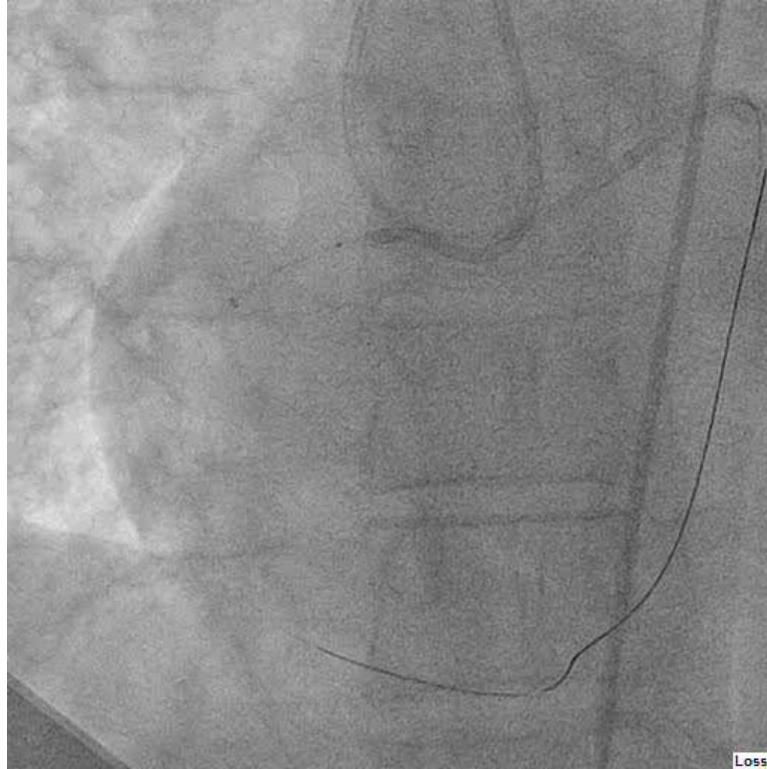
## RAO demonstrating anteg and retro dancing together



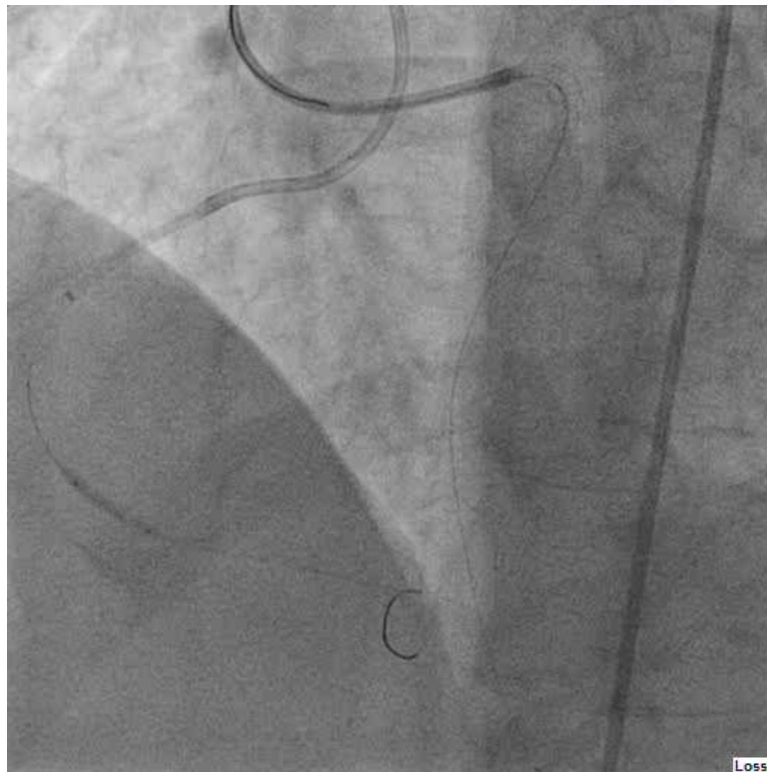
## Post REVERSE CART ...



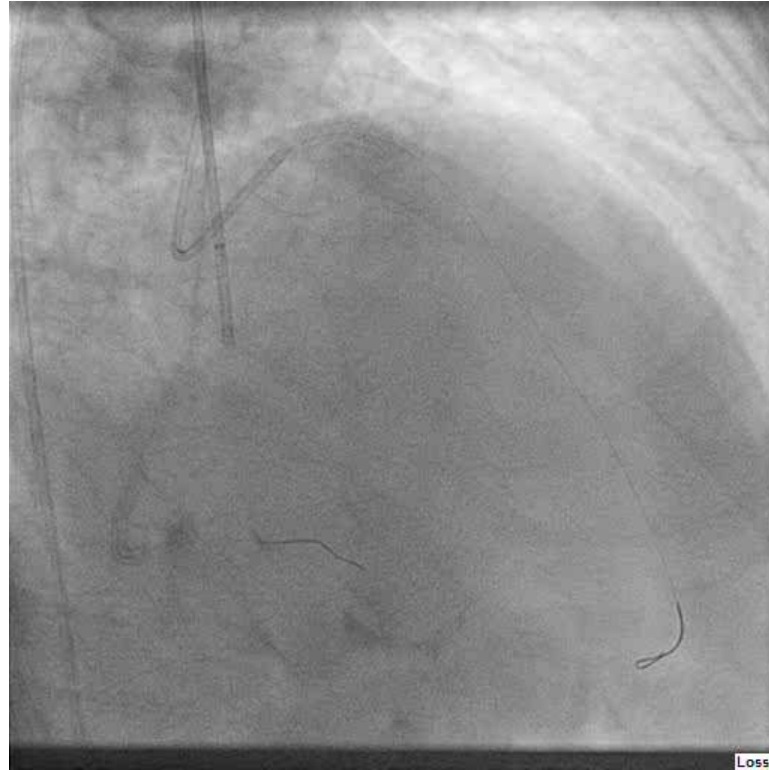
NO RG3 available → Rendezvous technique

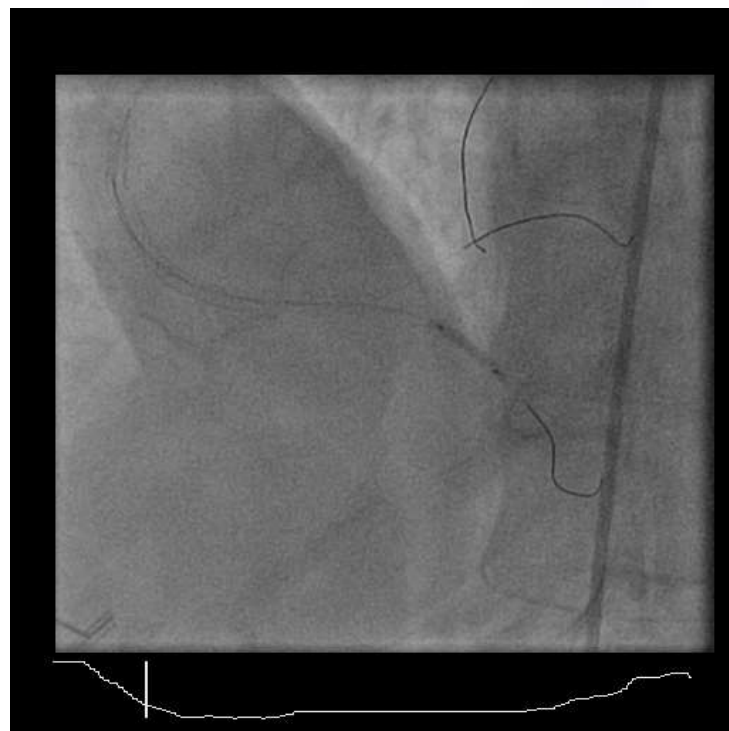


## Retrograde injection with distal RCA balloon inflated



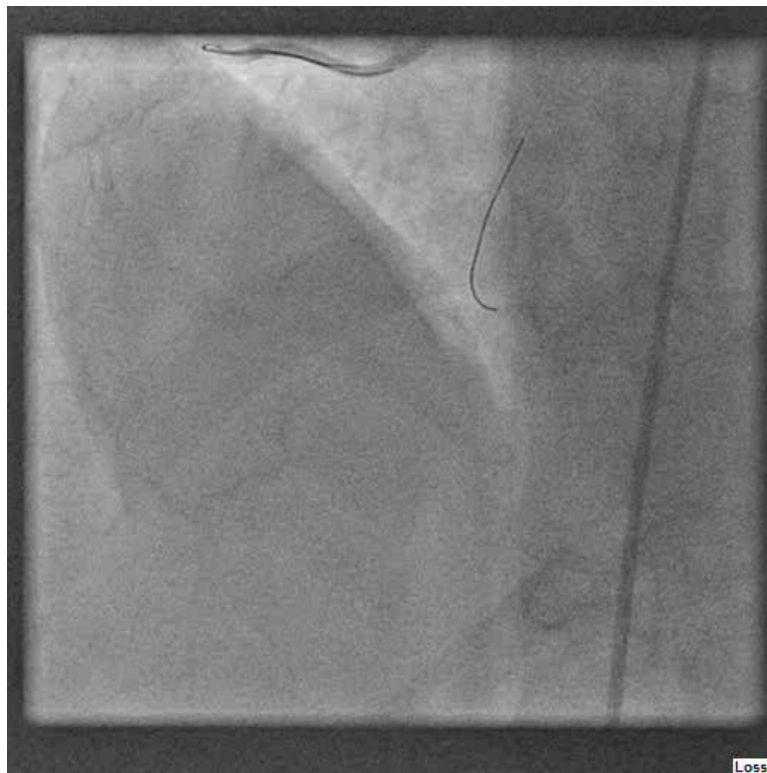
No harm to LAD ...







Final result .....



Lossy

## Final result

