

Relax...take it easy!

(as it seems)

Paolo CANOVA, MD

Interventional Cardiology Unit

Cardiovascular Department - Papa Giovanni XXIII Hospital – Bergamo

Male, 69 years old

Cardiovascular risk factors:

- *Arterial hypertension*
- *Dyslipidemia*
- *Past smoker*

Clinical history:

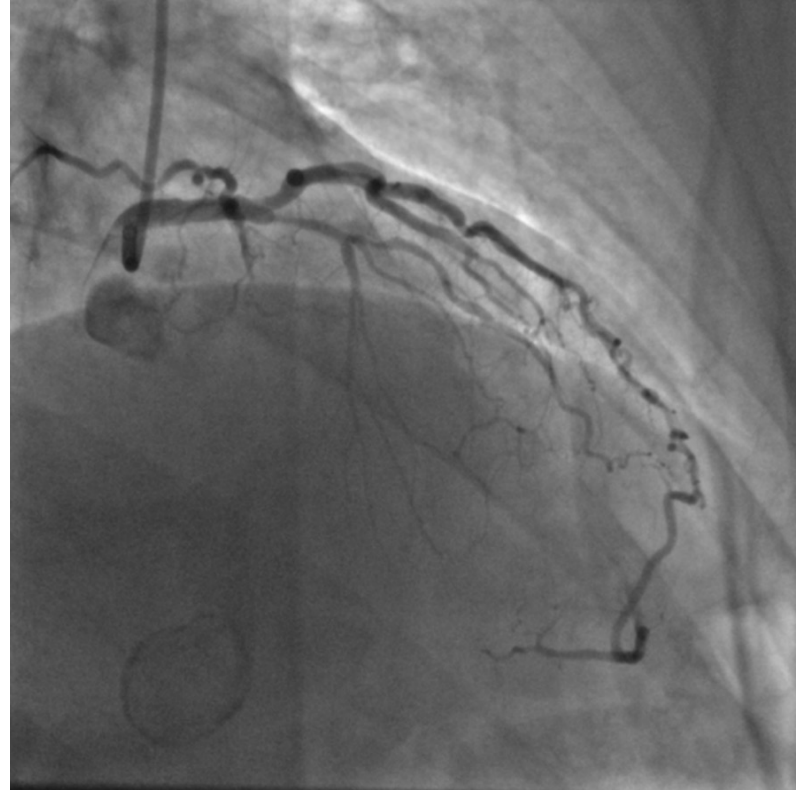
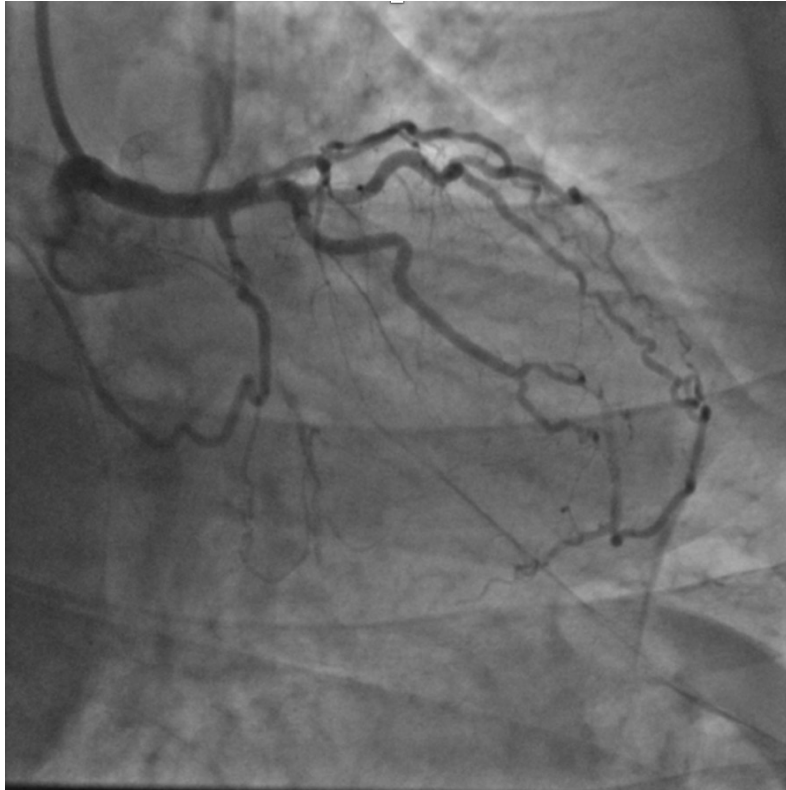
- *Rheumatoid arthritis.*

Cardiological history:

- *12.2022 admitted for ACS with acute heart failure (EF 40%) and non sustained ventricular tachycardia (VTNS).*
- > *16.12: PTCA + DES of proximal RCA.*
- *19.12 planned recanalization CTO of LAD.*

Procedural setting:

*Right radial artery: ebu launcher 3.75, 7F: single access for homocoronary donor vessel
(selective injection with a microcatheter)*





J-CTO SCORE

<i>Blunt stump</i>	YES
<i>Calcification</i>	YES
<i>Bending >45°</i>	NO
<i>Occlusion length <20 mm</i>	NO
<i>Re-try lesion</i>	NO

2

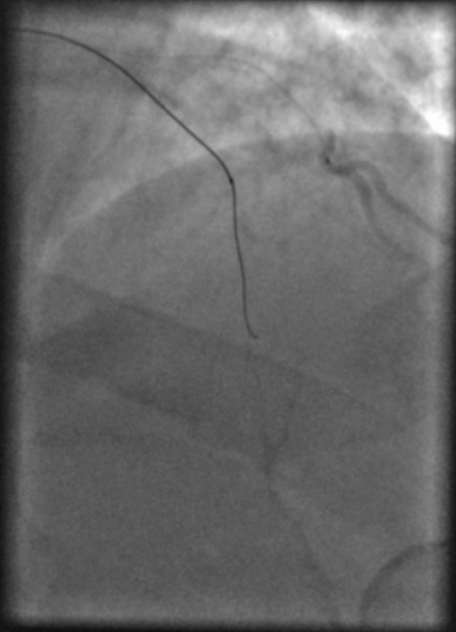
Other important considerations:

For ANTE: tapered distal cap in diseased vessel.

For RETRO: severe diseased and calcified proximal vessel.

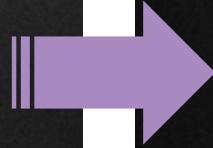
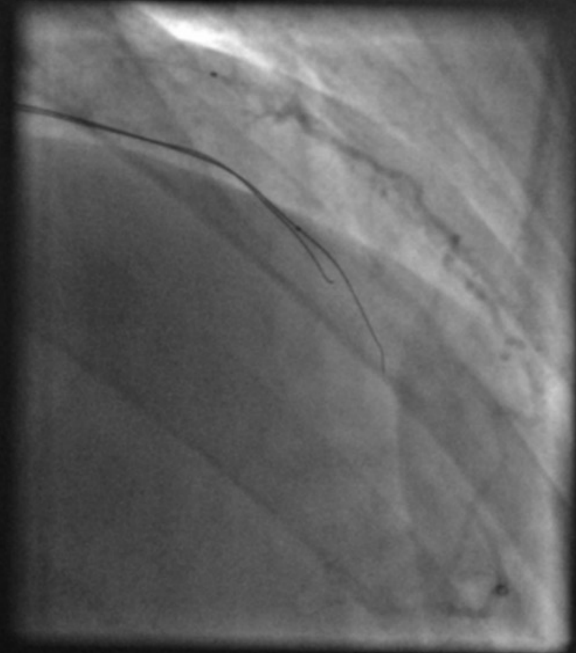
Antegrade wire escalation :

Finecross & Gaia 2 - Gaia 3

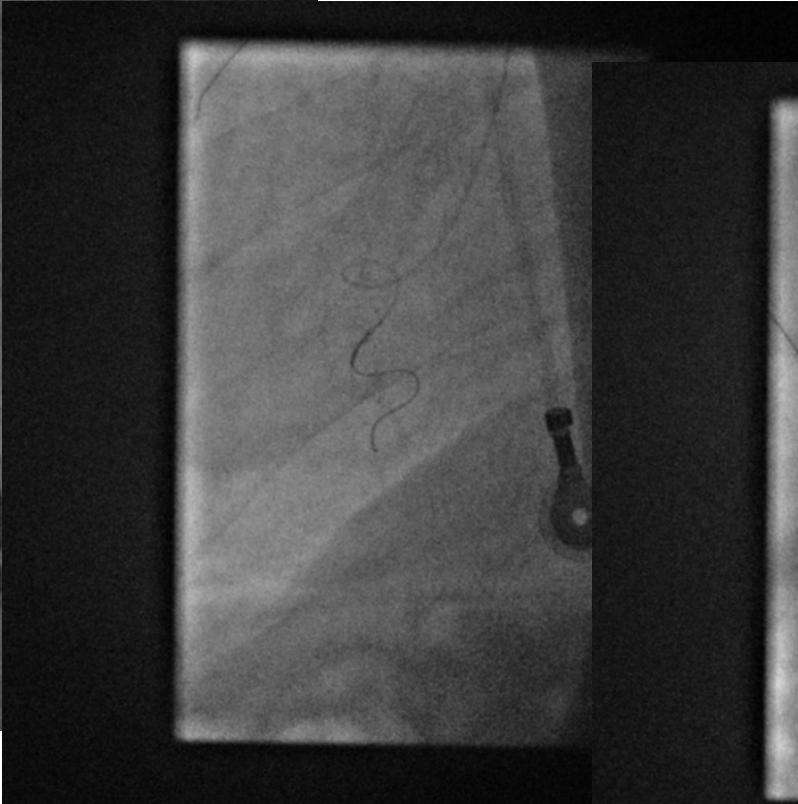
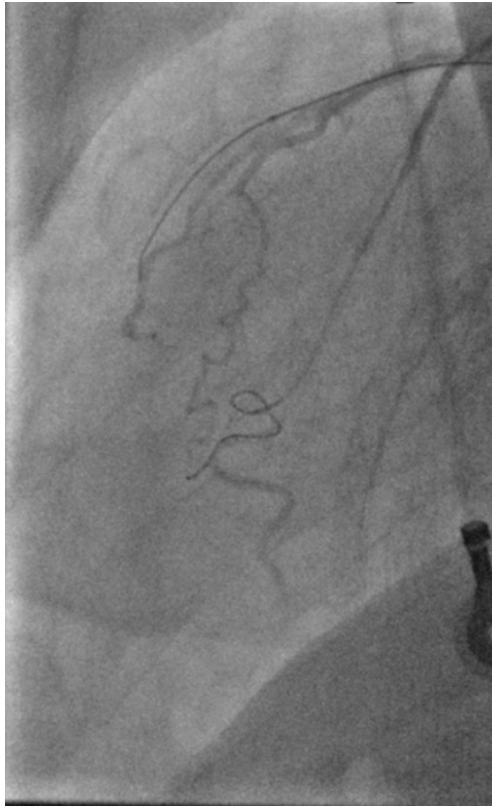


Parallel wire :

Conquest Pro 9



Switch to retrograde: Caravel 150 cm & Suoh 03



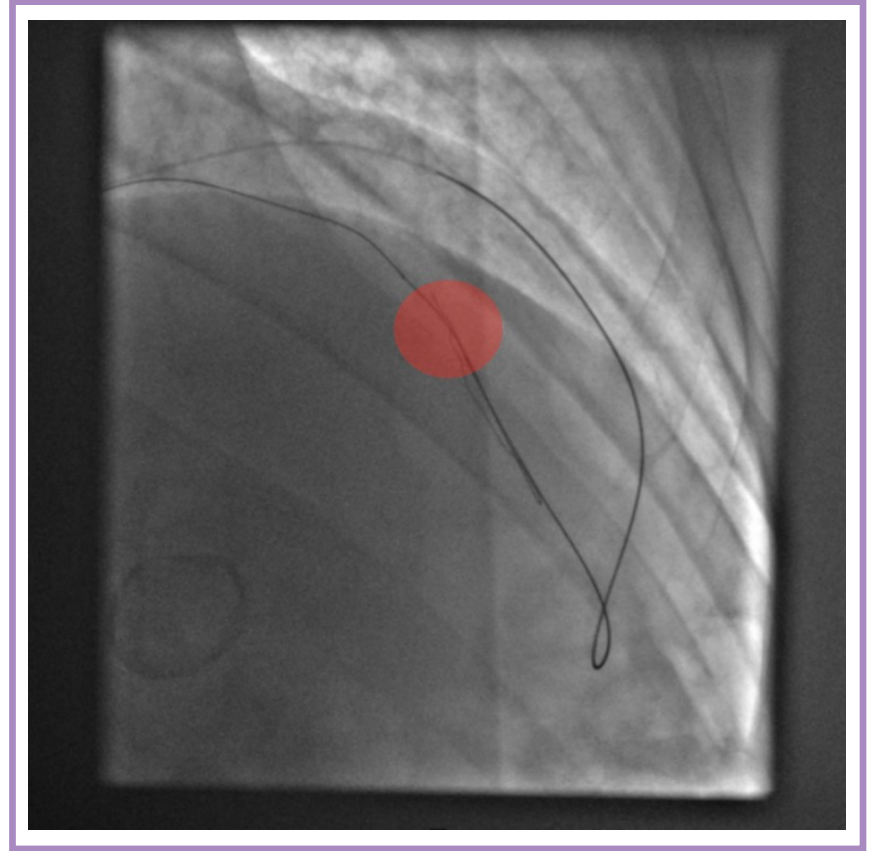
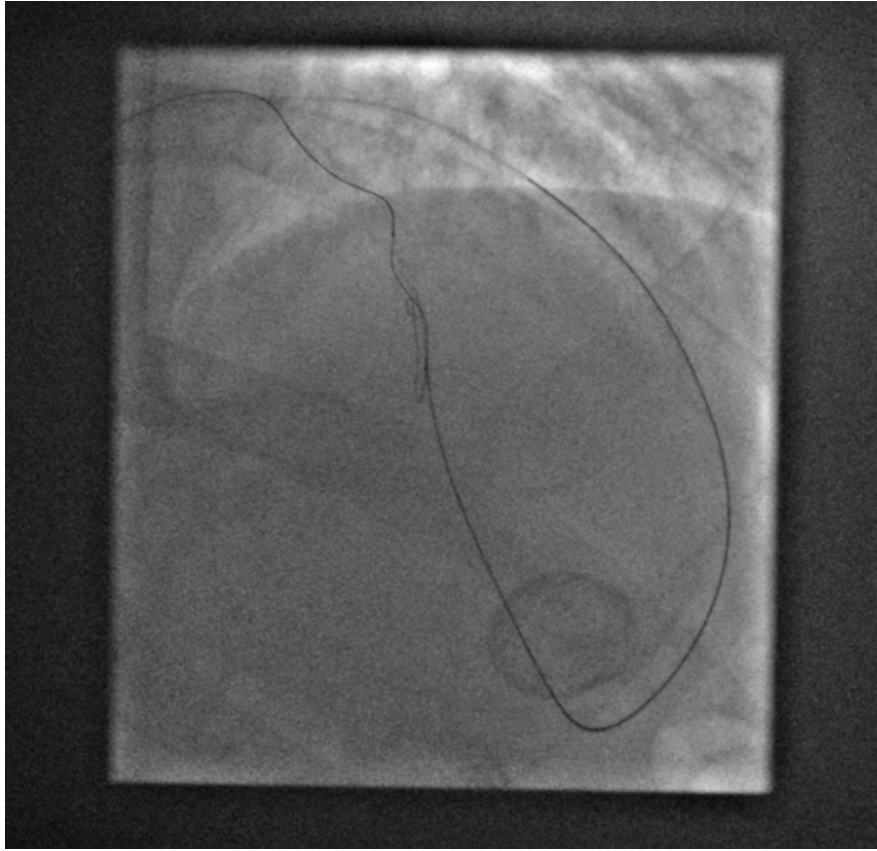
Retrograde wire escalation:

Gaia 2 - Gaia 3 - Conquest Pro 9



*... no possibility
to puncture the proximal cap*

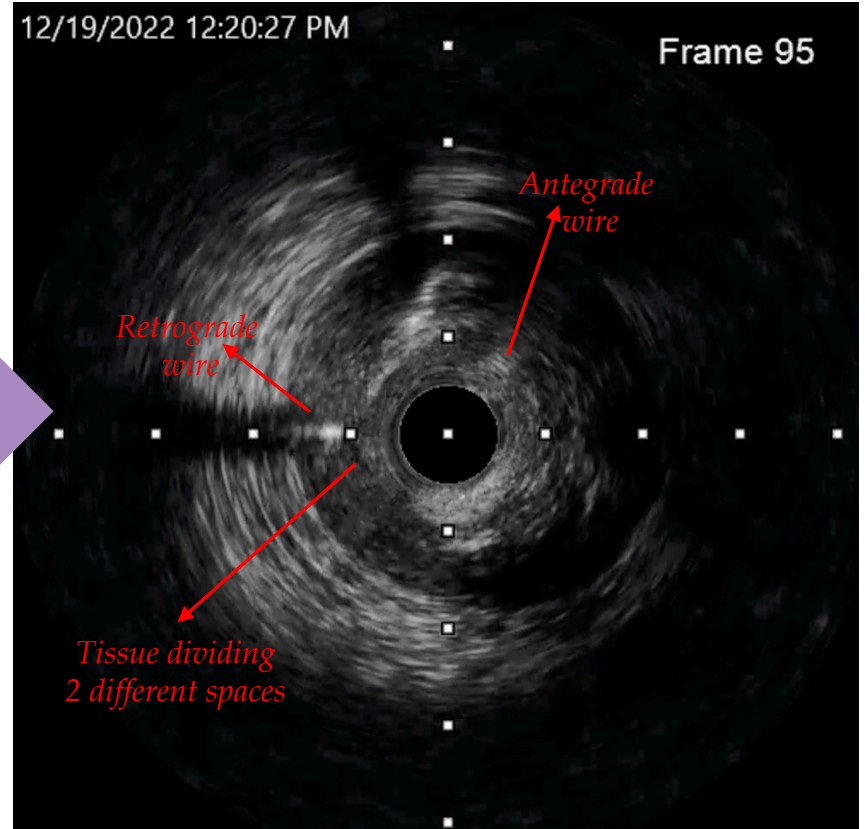
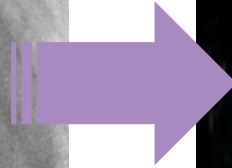
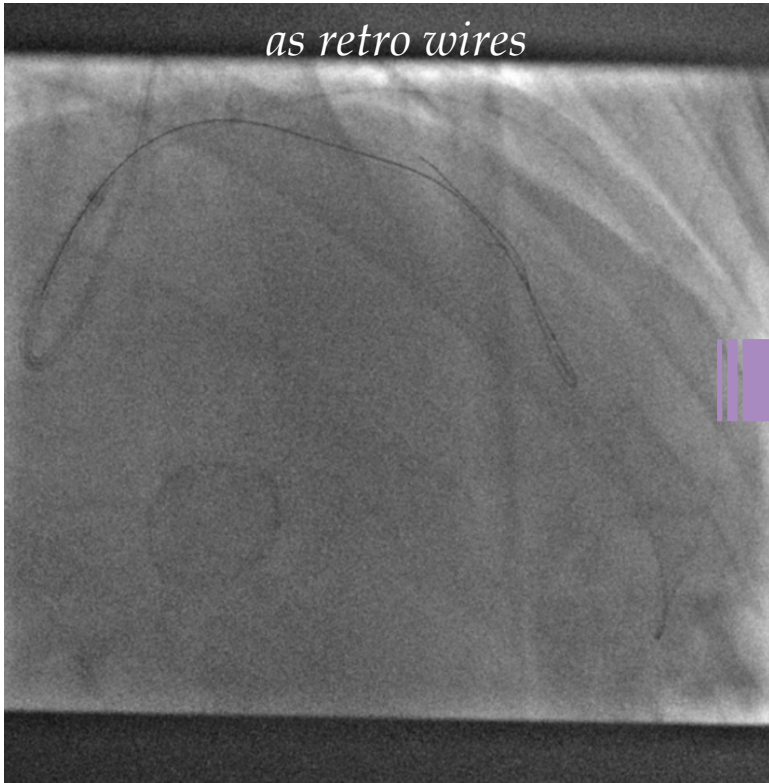
Antegrade knuckled: Fielder XT-A



Reverse CART: SC balloon 2.5x12 mm.

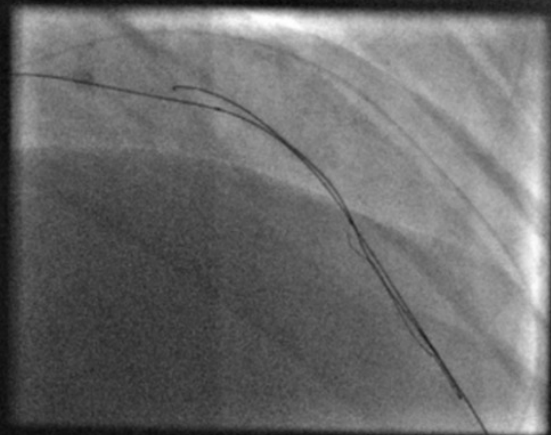
Failure with Gaia 2 – Gladius MG

as retro wires

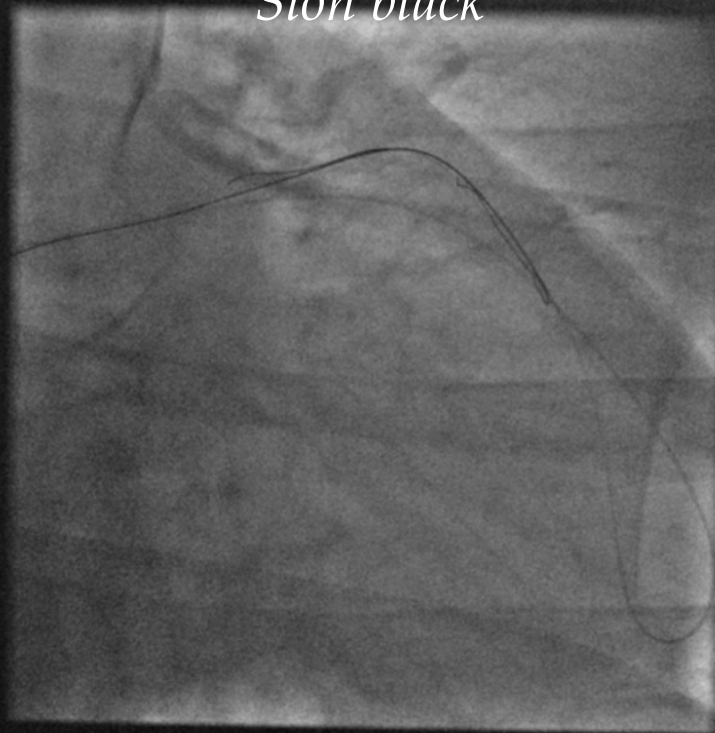


Predilatation with SC balloon 2.5x30 mm. ...and new attempts:

Gladius MG

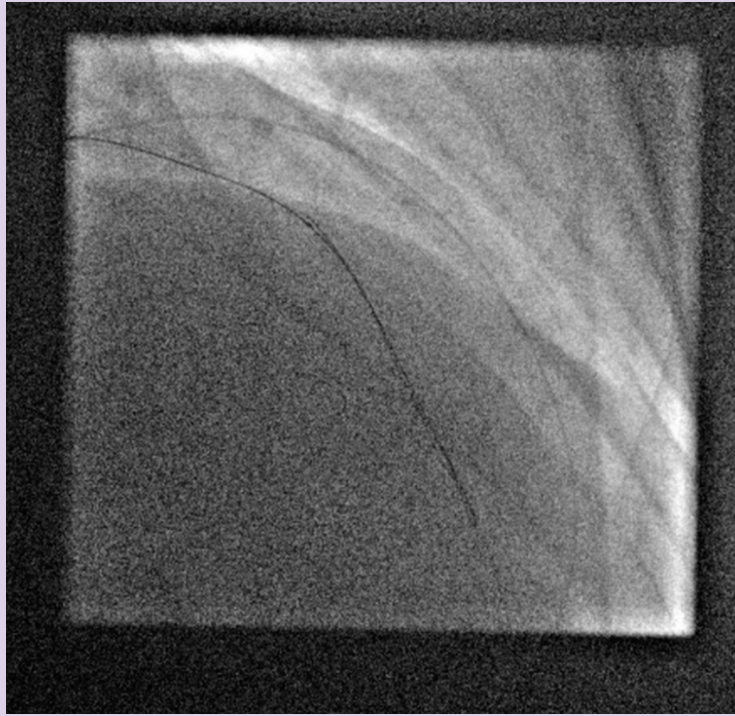


Sion black



Failurebut....

“palpated ass sign”



Probably we got a connection



Difficult reentry in prox. LAD due to the severe disease



mother & child assisted reverse CART



but the setting is ...

7F guiding catheter with retrograde crossing



PING-PONG

...antegrade “job” all to be redone!

Left radial artery: ebu launcher 4.0, 7F.

IVUS pullback

Connection point

...more proximal....

Frame 56

Antegrade wire

Retrograde wire

Frame 229

Antegrade wire

Retrograde wire in different space

Caravel microcatheter entering into diagonal

Mother & child assisted reverse CART

Guidion

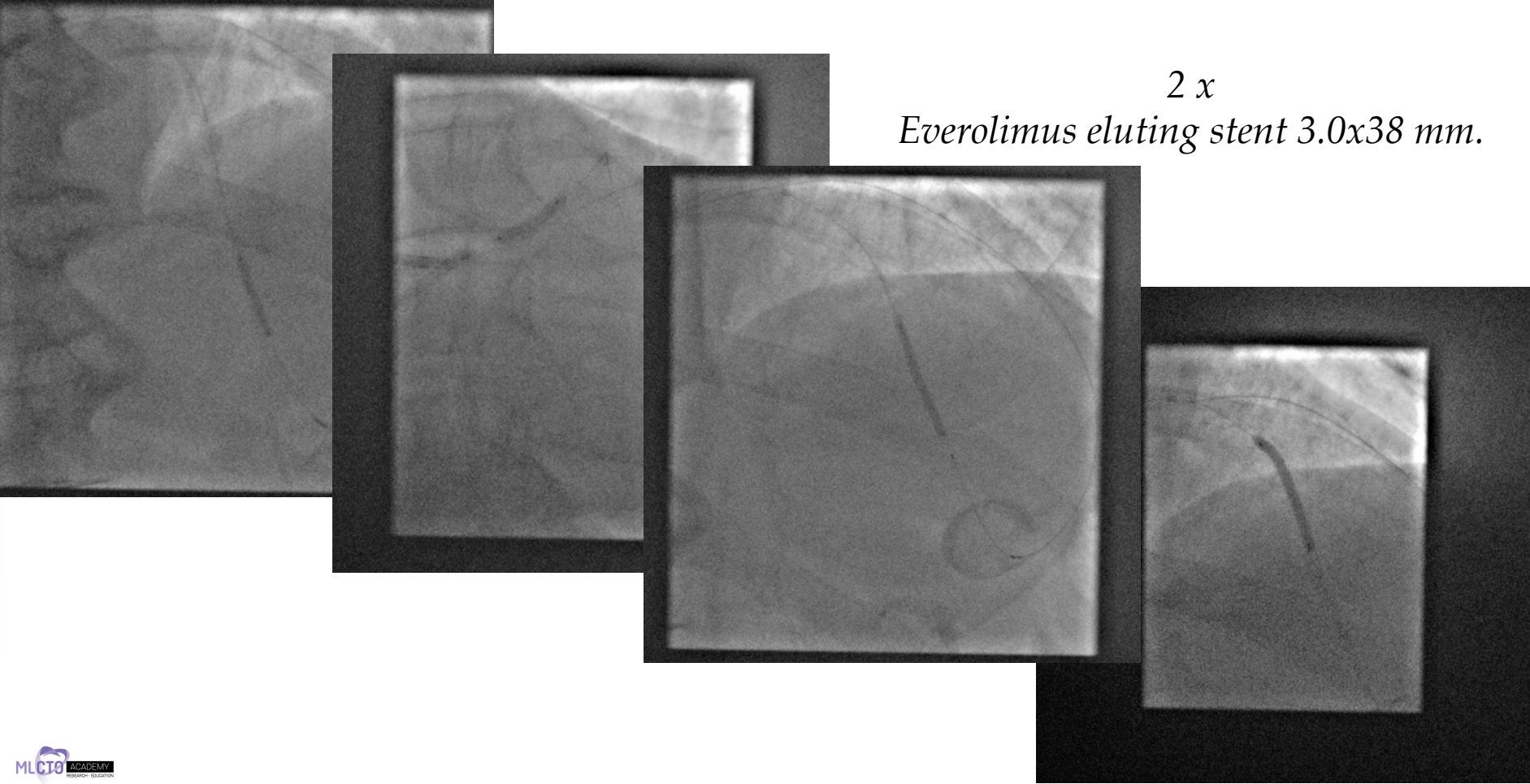


Gaia 2



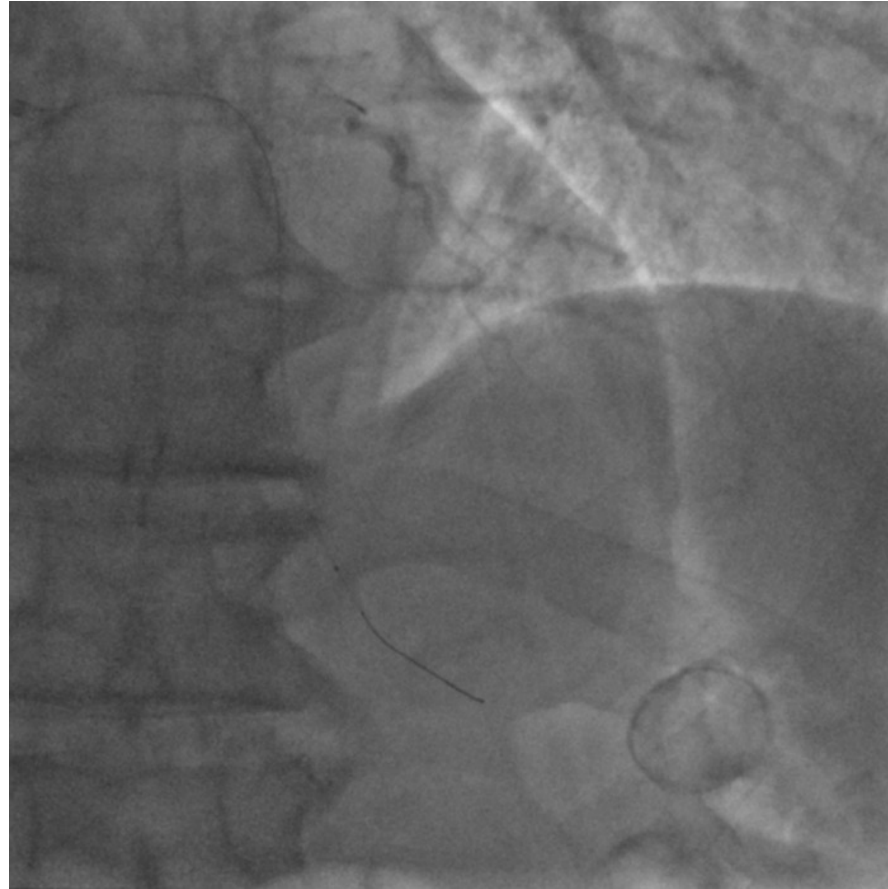
Predilatation with NC balloon 2.5–3.0 mm.

*2 x
Everolimus eluting stent 3.0x38 mm.*



Removing the retrograde system:

Finewire antegrade on RG3 and Check of epicardial donor vessel

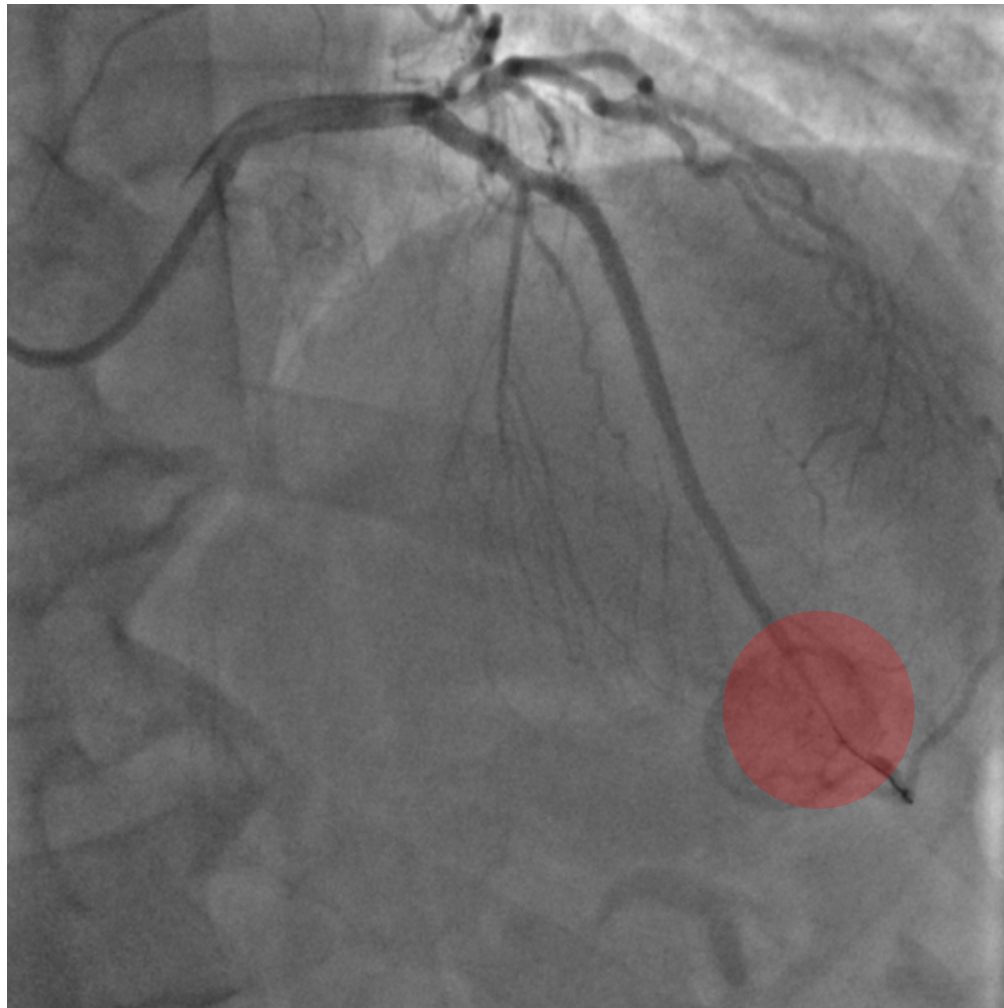


Zotarolimus eluting stent 3.0x22 mm.

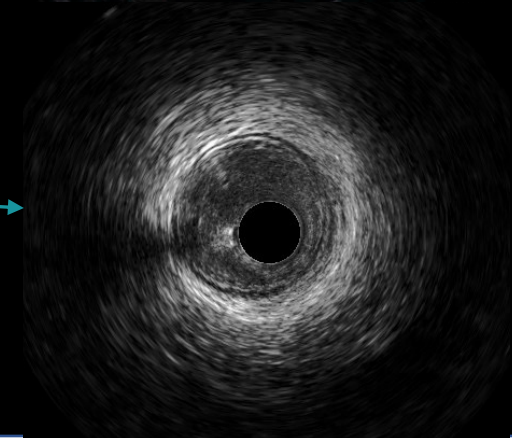
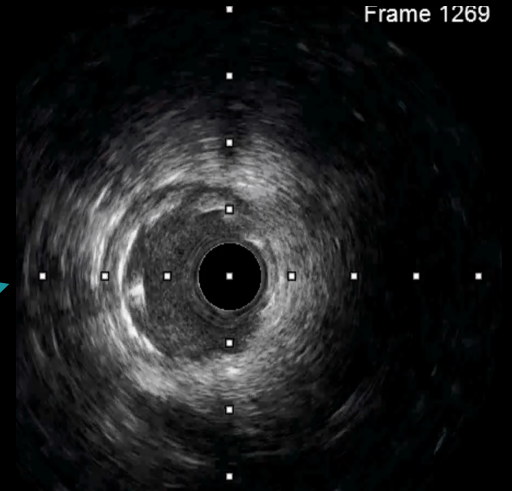
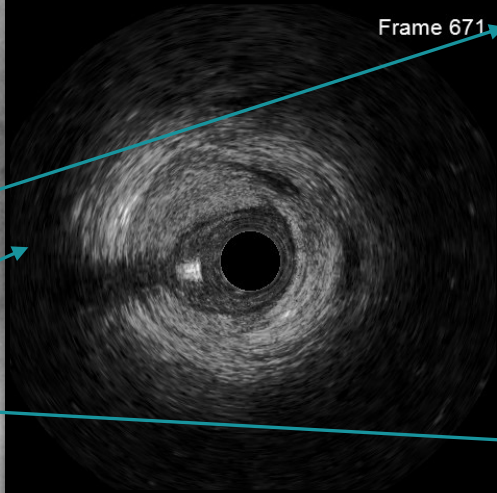
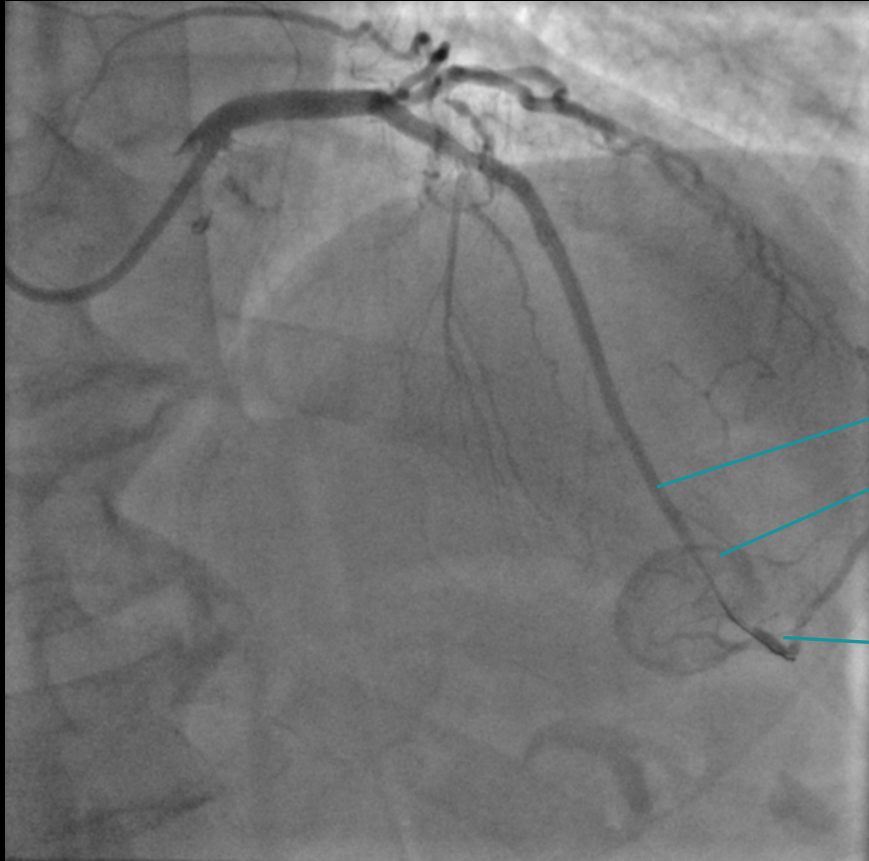


*Zotarolimus eluting stent 3.5x22 mm.
POT NC balloon 5.0 x 8 mm.*





IVUS check



Frame 1269

Frame 671

