



# Retrograde diagonal branch CTO using homocoronary epicardial branch

**SAVE YOUR SEAT!**

JUNE 29th-30th & JULY 1st



**MULTI LEVEL CTO  
ANNUAL COURSE  
2023  
NICE FRANCE**

Vincent Pham

Hôpital Privé Parly 2, Le Chesnay



# Patient's presentation

## Past medical history :

- Ischemic heart disease discovered by stable angina and anteroseptal ischemia 4/17 segments. PCI of LAD with failure to reopen first diagonal branch covered by LAD stent
- Sleep apnea
- Hypertension
- Dyslipidemia

Patient is still symptomatic (chest pain) despite optimal medical therapy

Stress myocardial scintigraphy found positive with ischemia on 3/17 segments despite treatment

# Traitement

- Calcium blocker
- Molsidomin
- Statin
- Acetyl salicylic acid
- Beta blocker

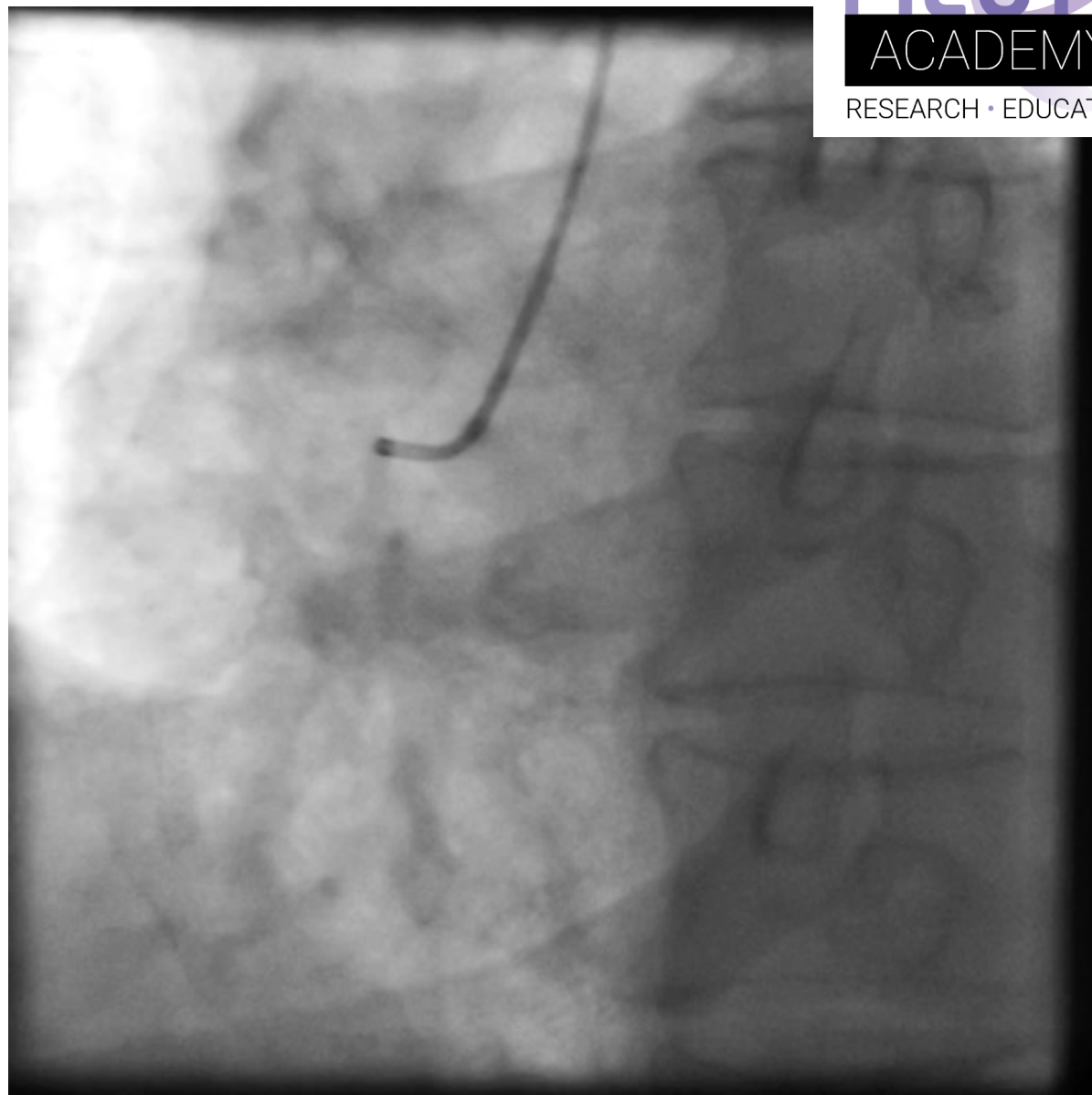
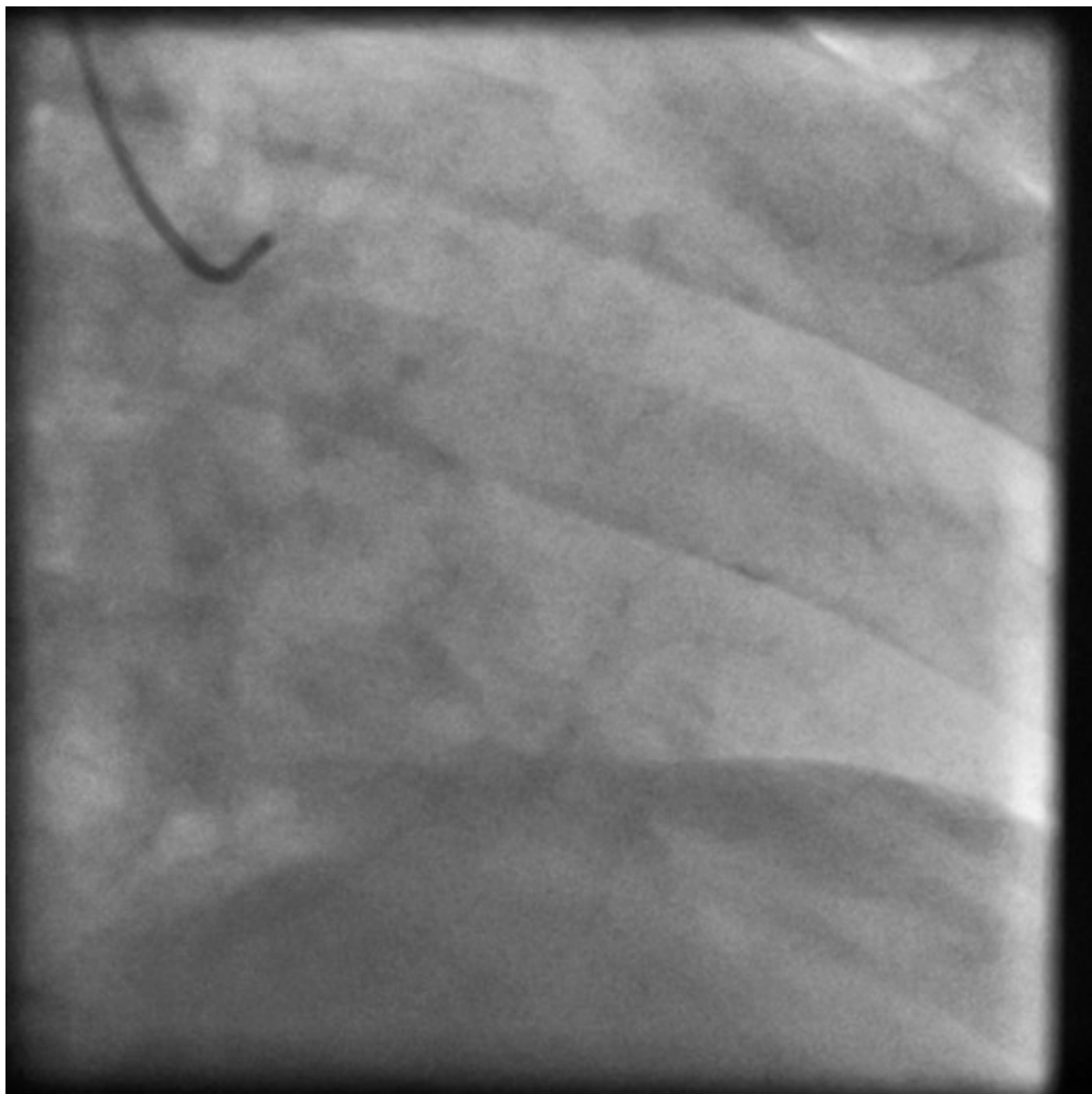


**SAVE YOUR SEAT!**  
JUNE 29th-30th & JULY 1st

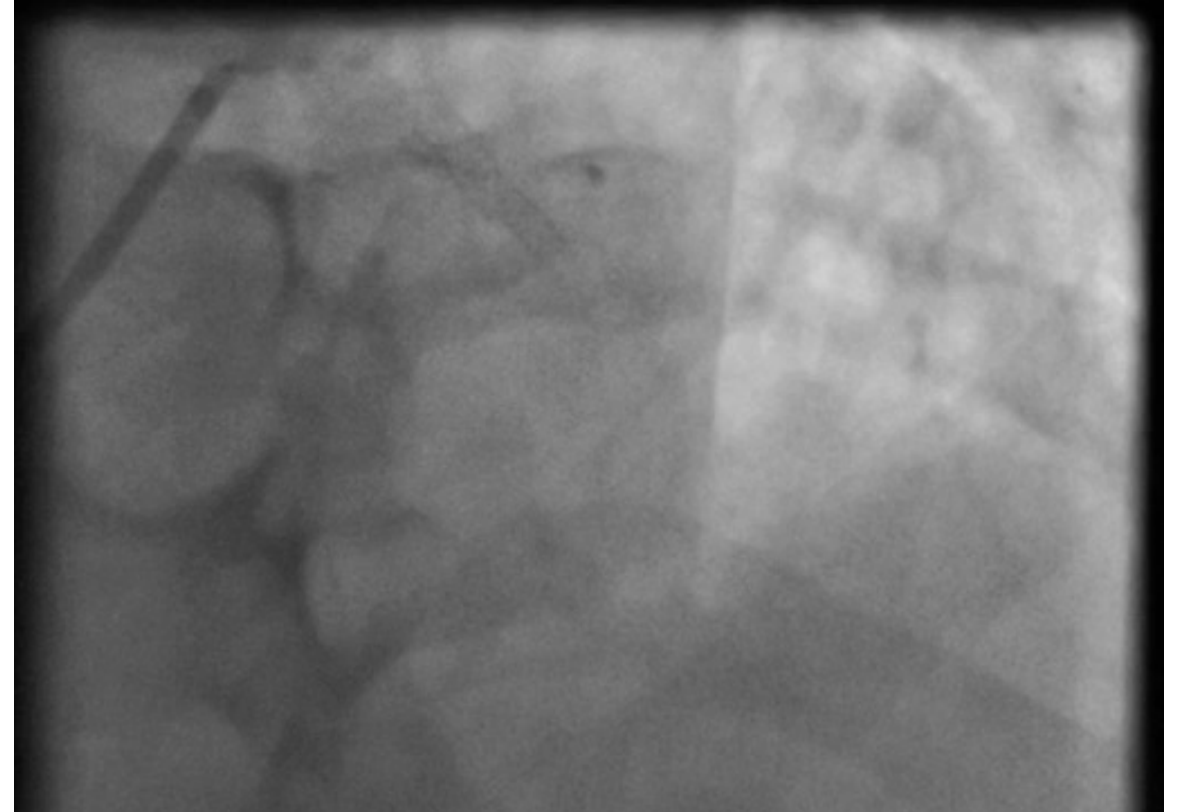
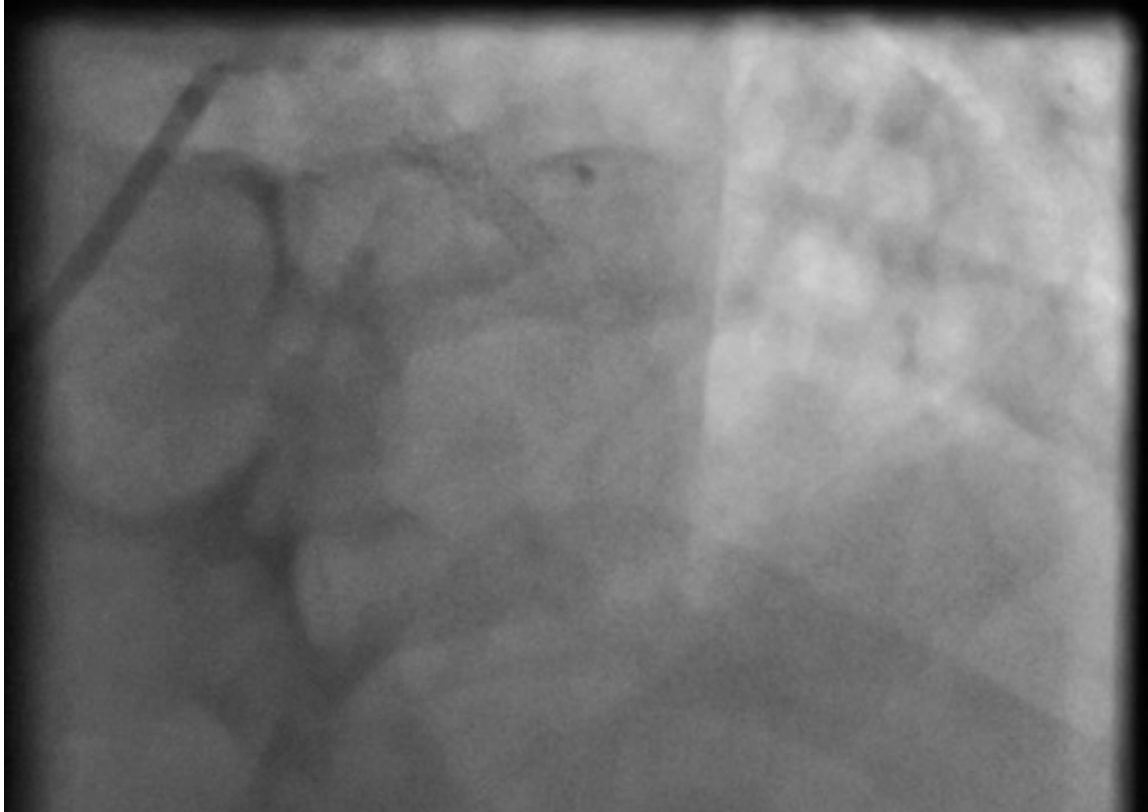
8<sup>TH</sup> EDITION  
**MLCTO**  
SHARING KNOWLEDGE

**MULTI LEVEL CTO  
ANNUAL COURSE  
2023  
NICE FRANCE**

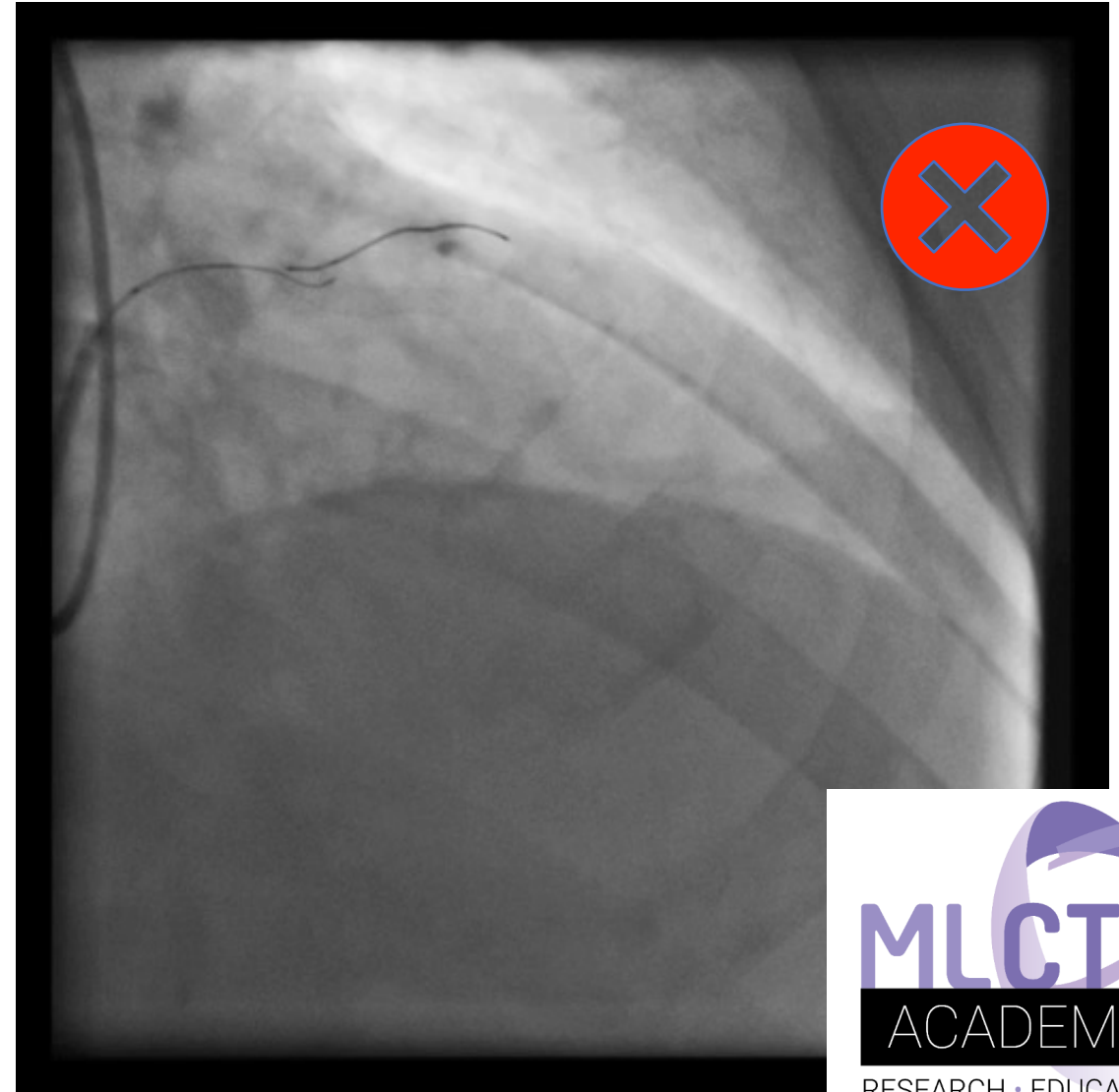
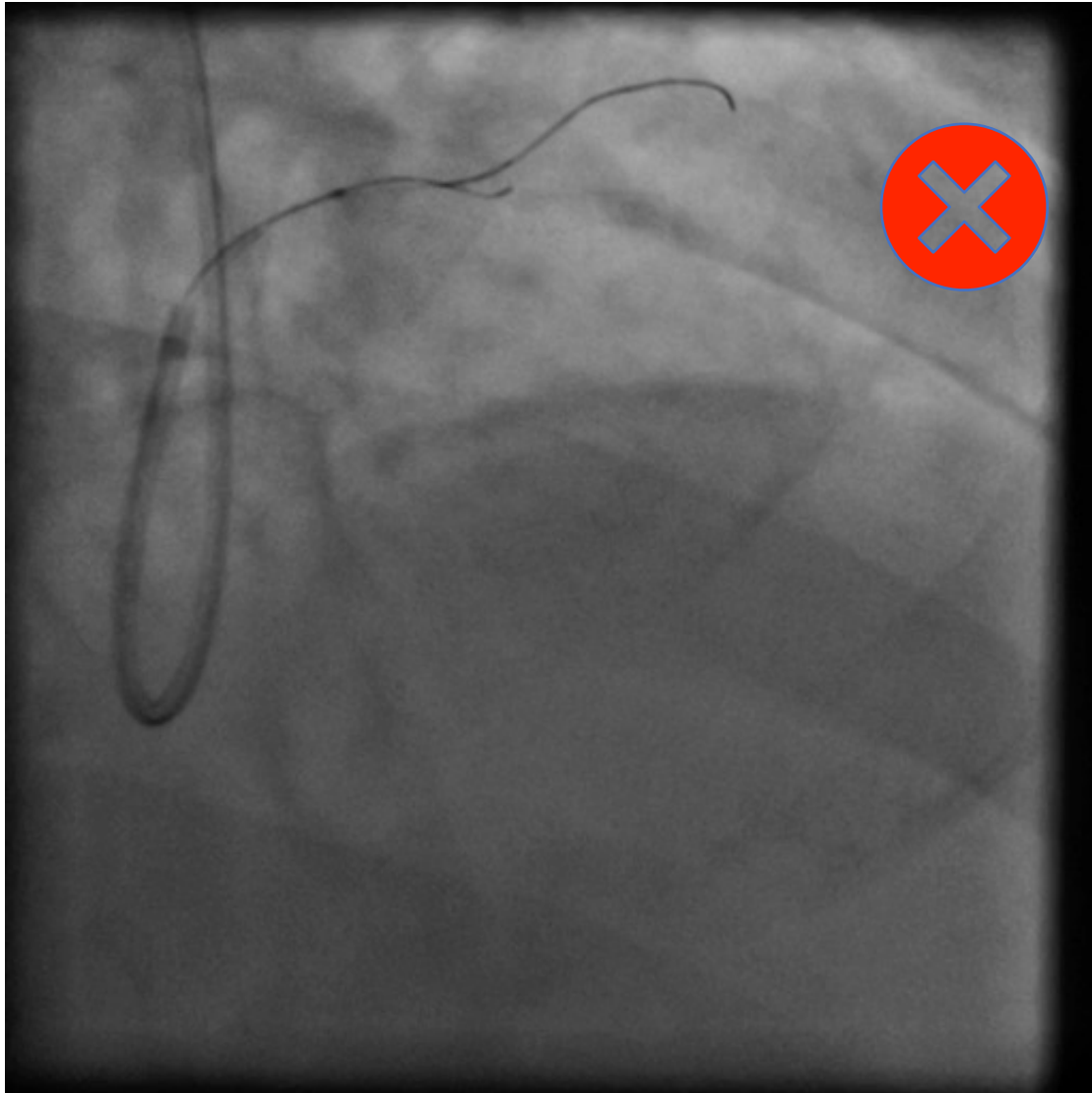
# Right coronary artery



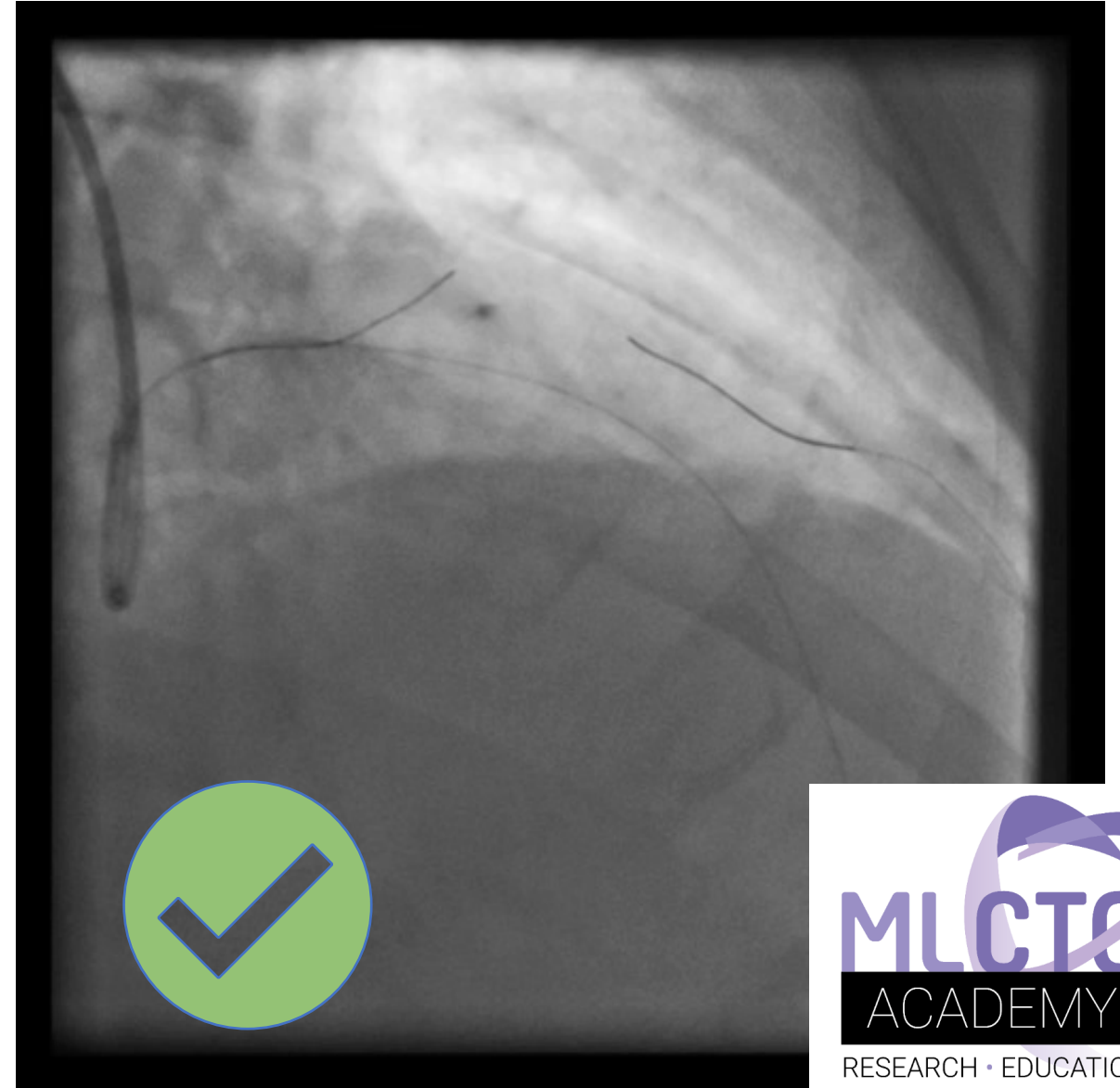
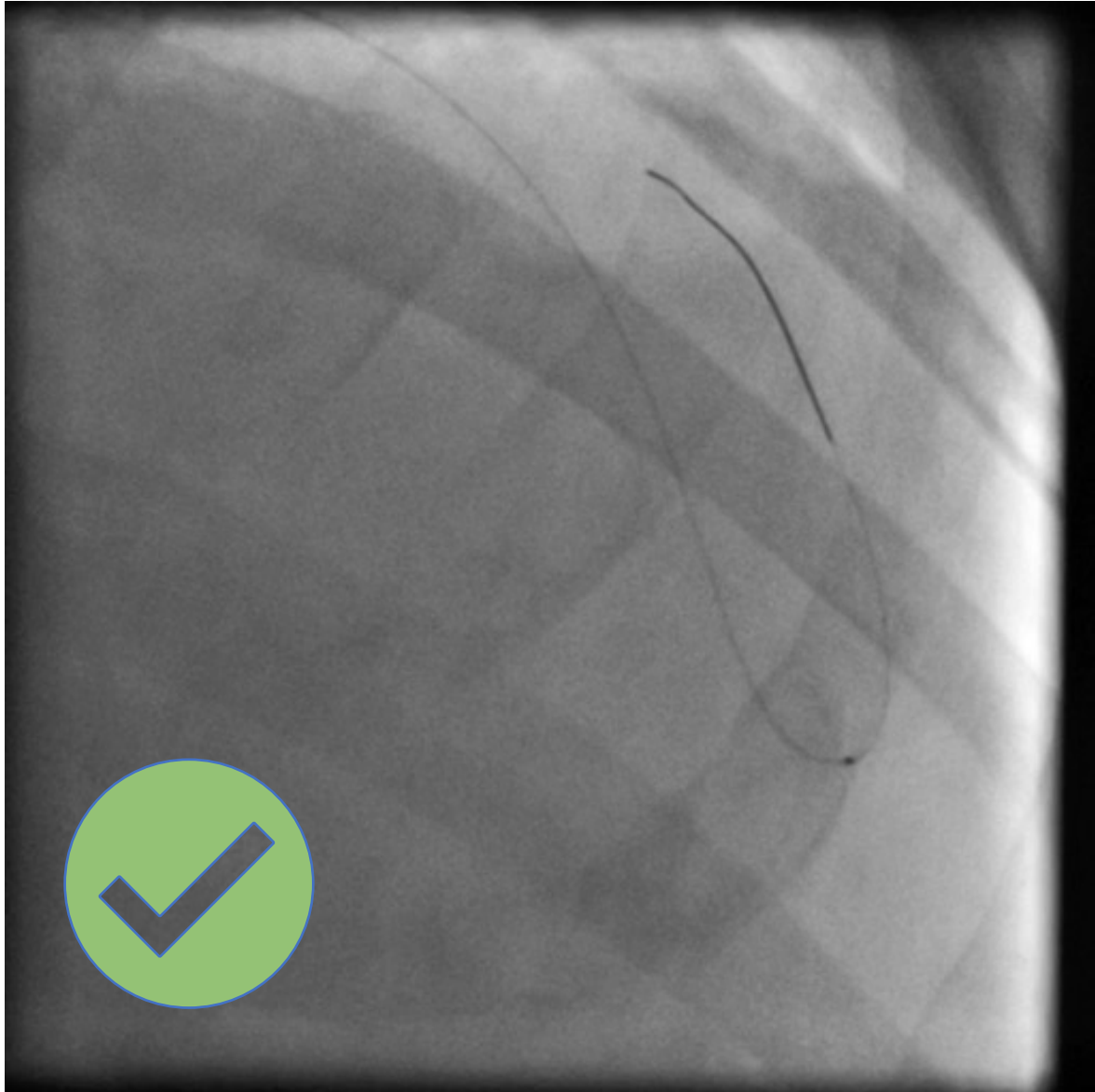
## Short CTO of ostial 2nd diagonal branche with competitive flow Rentrop 2 originating from apical LAD



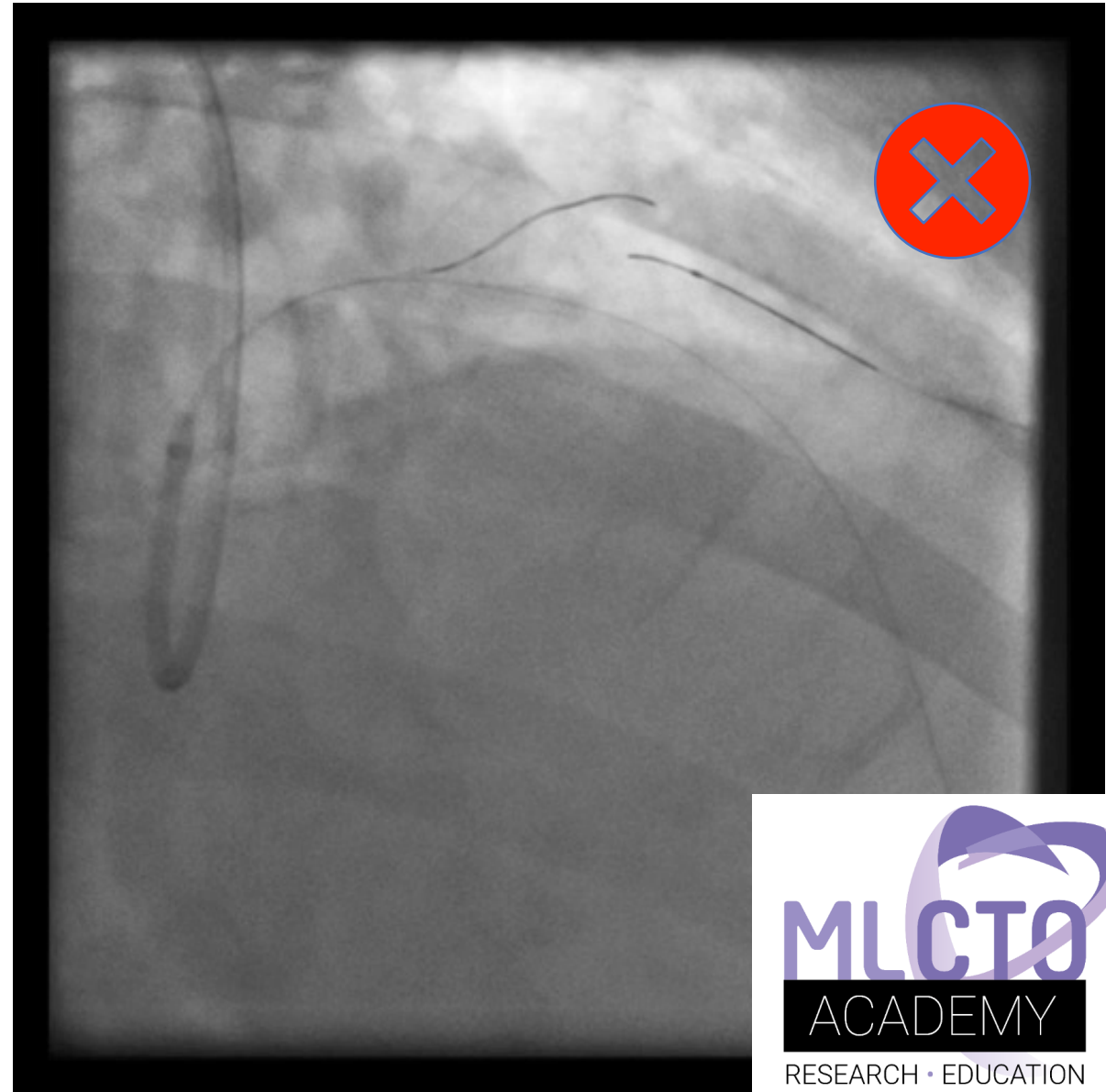
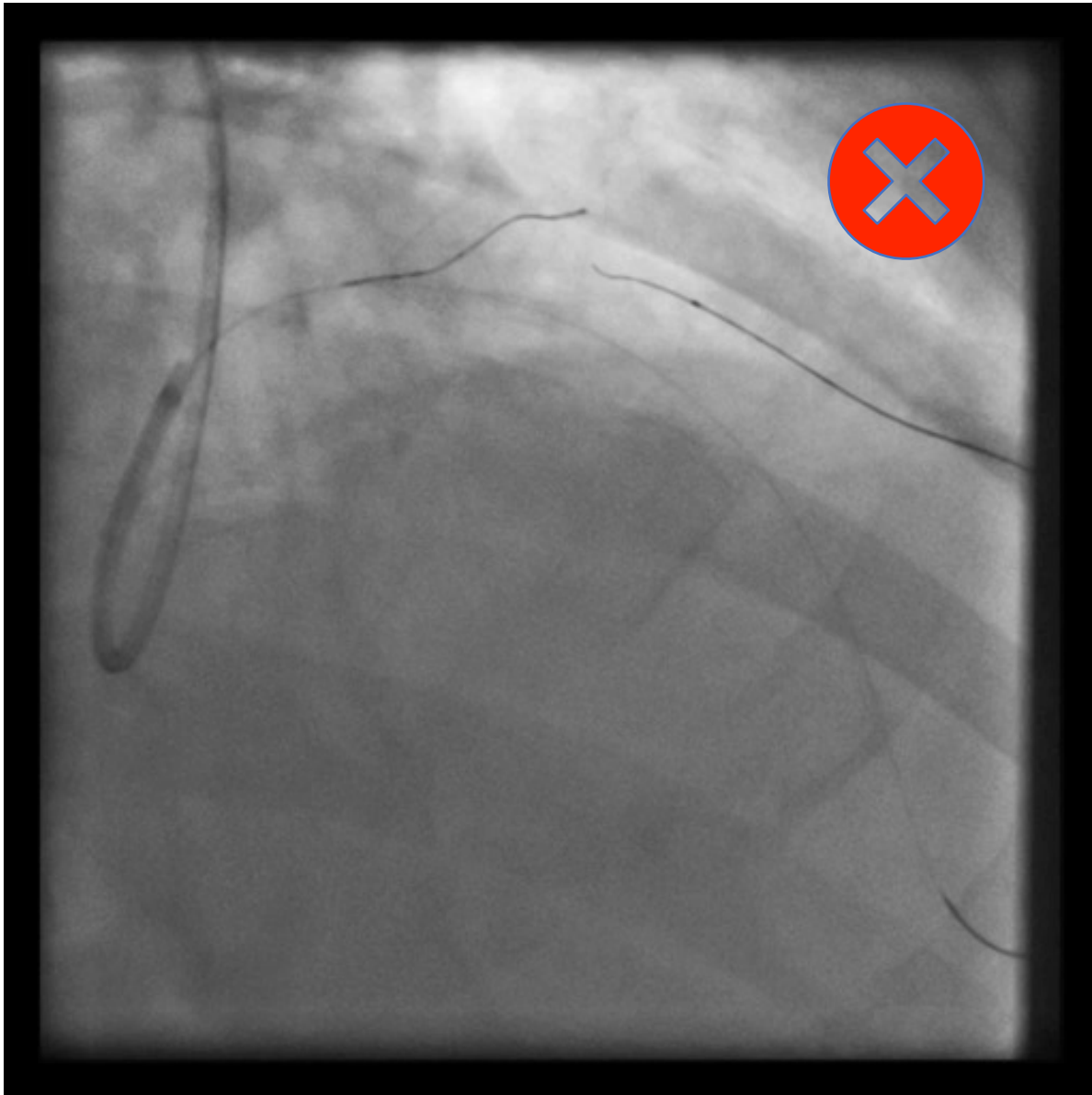
First try of antegrade wiring with micro catheter finicros and Fielder XT then  
Progress 140



## Decision to change approach with retrograde wiring using epicardial branches from apical LAD with Finecross 150 and Sion

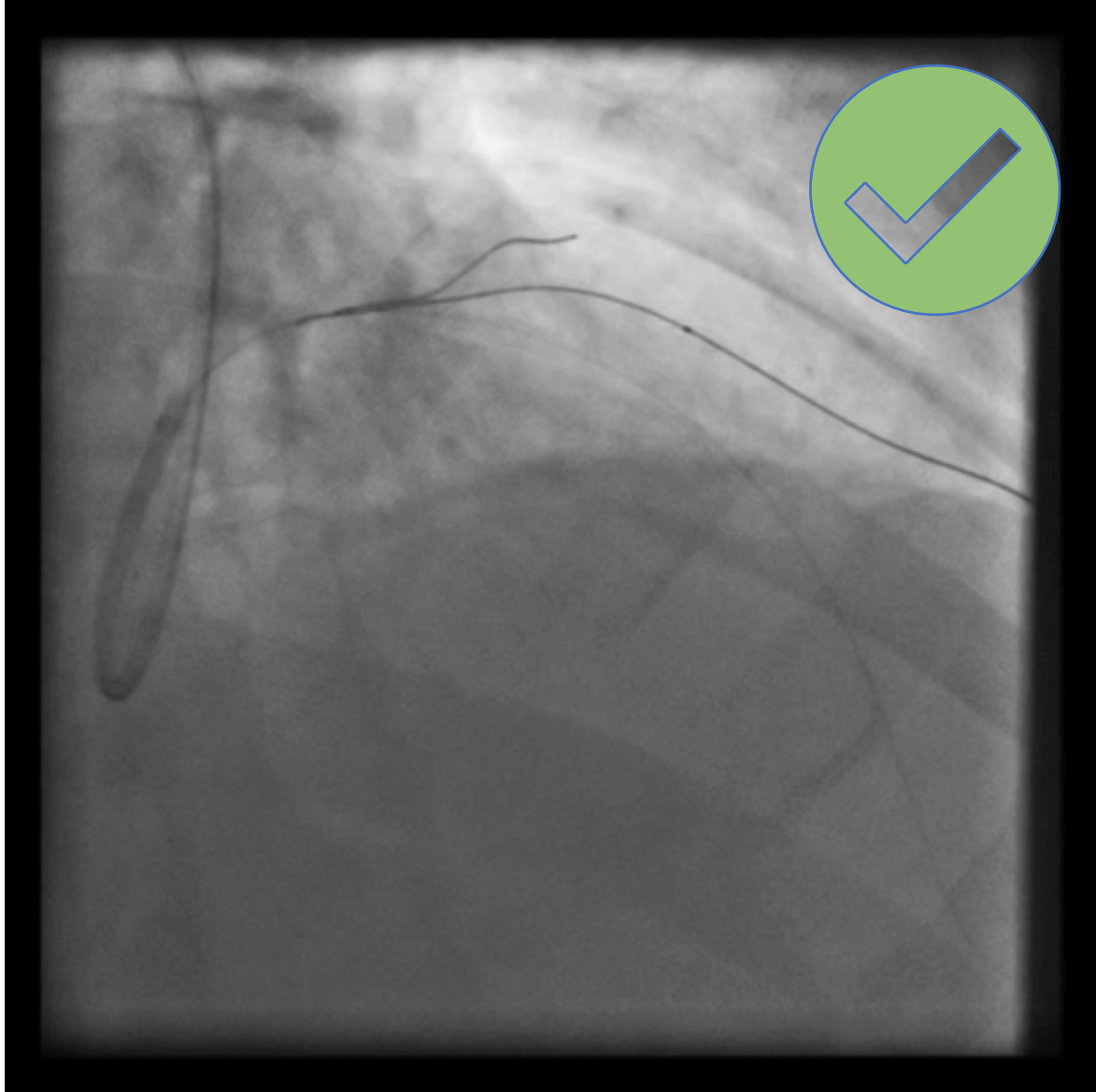


# Crossing failure with Sion and then Gaia 2

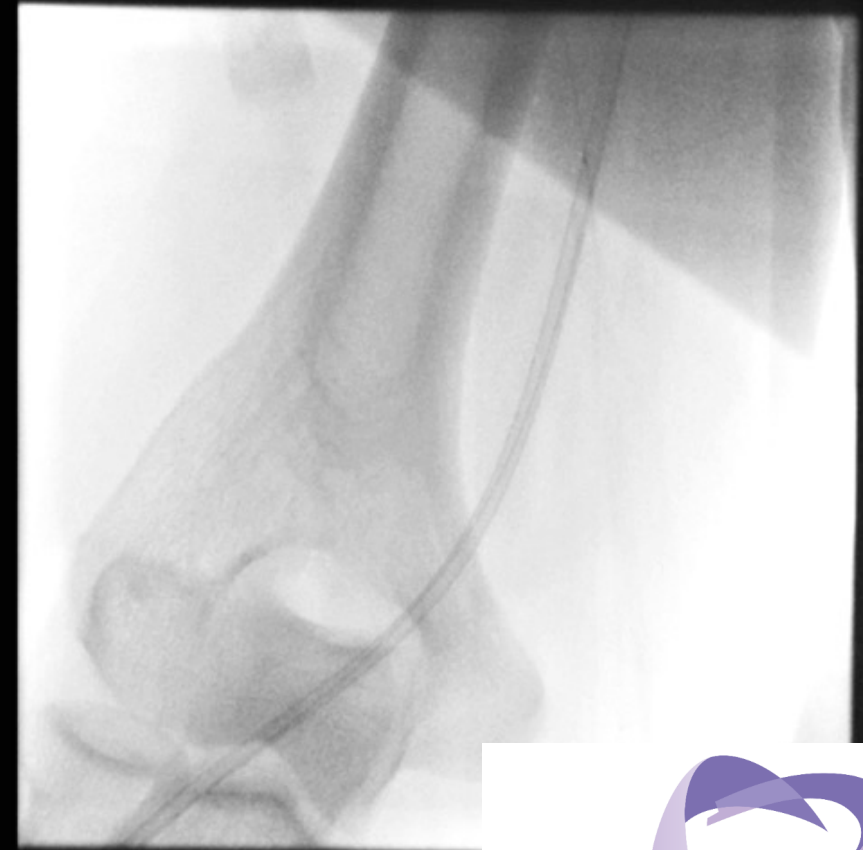
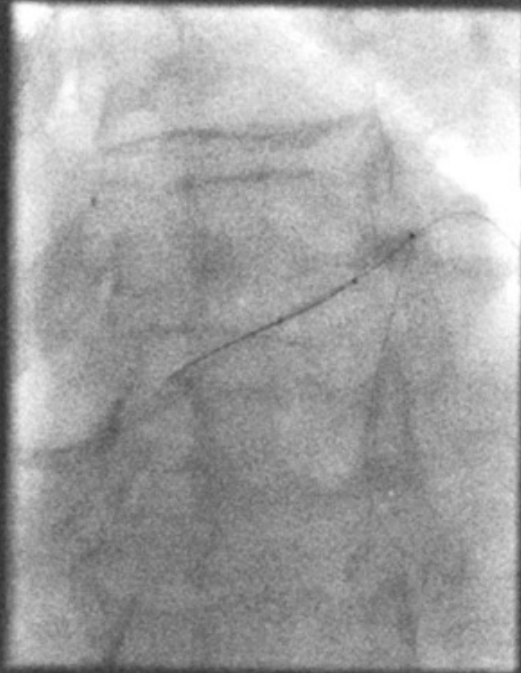




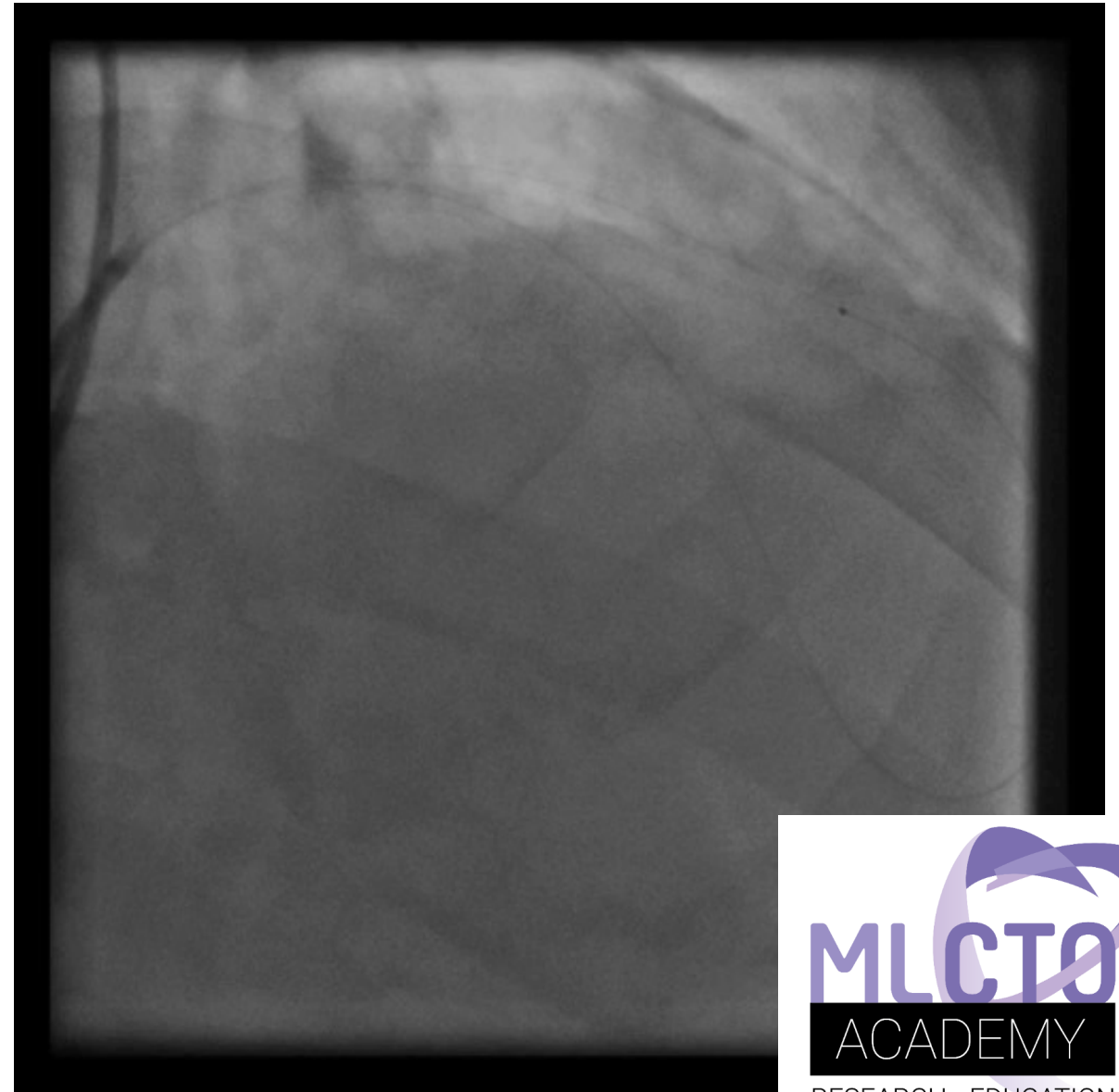
# Wire crossing with Gaia 3 Microcatheter is advanced past the CTO



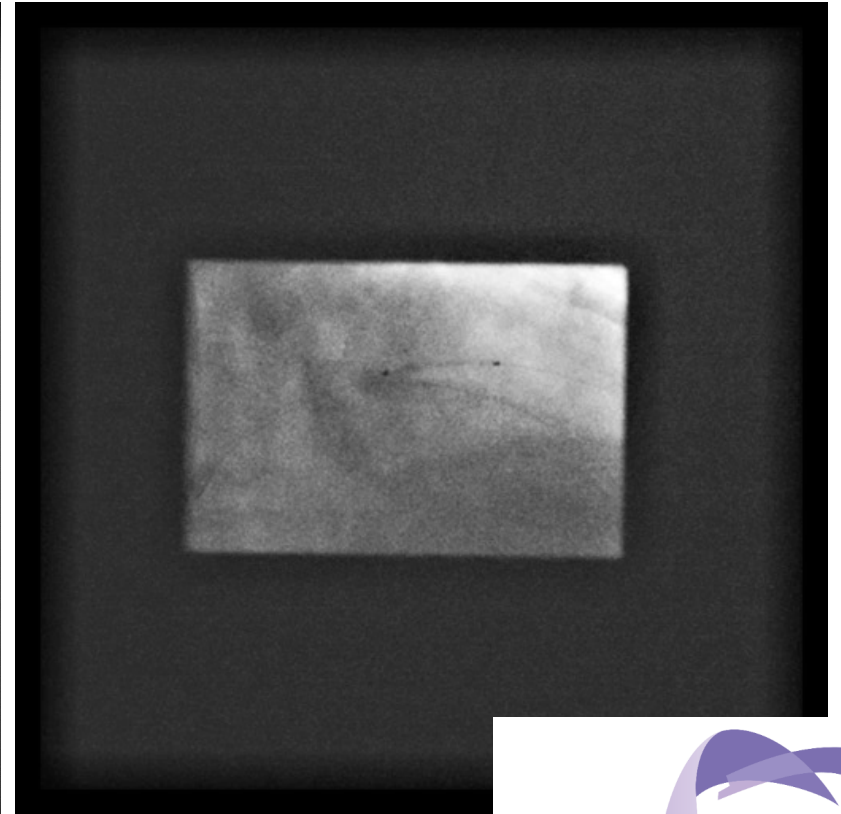
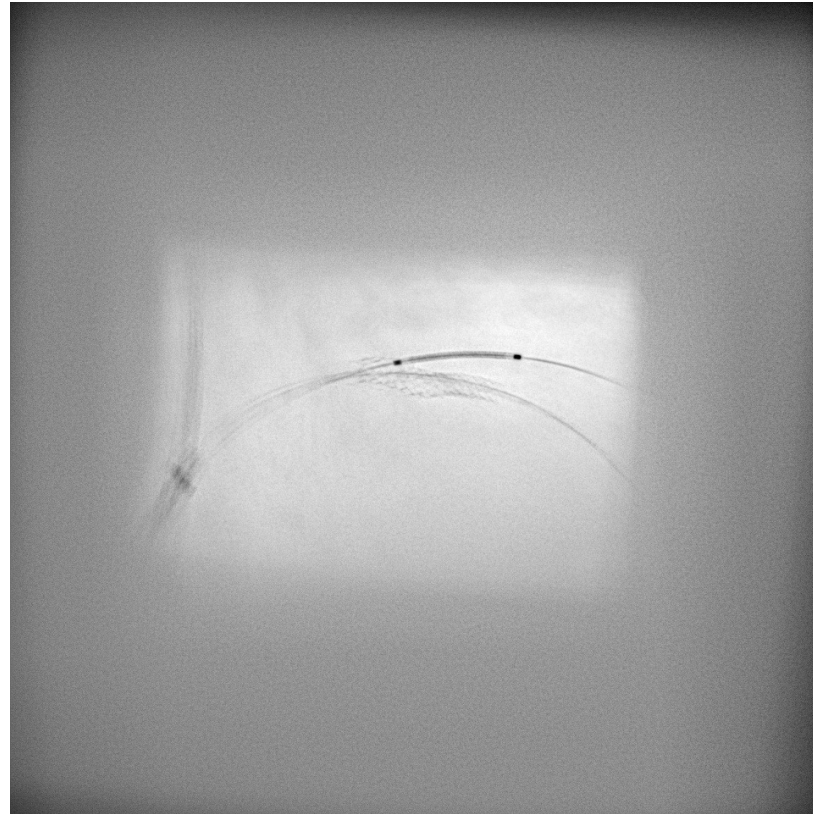
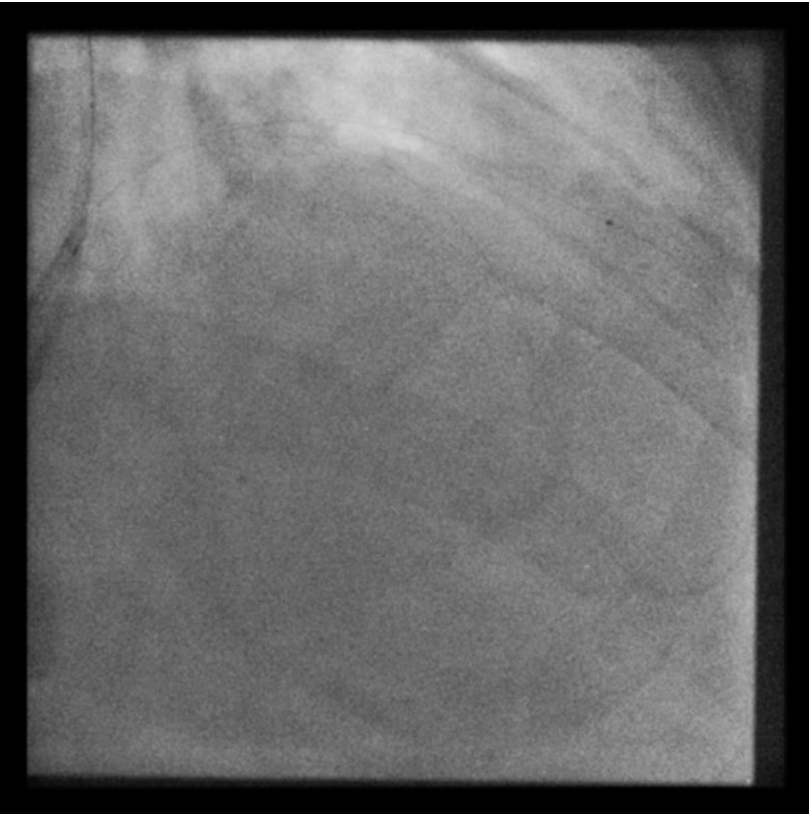
**Microcatheter externalization in EBU 3.75 7french guiding  
Exchange and introduction of RG3 wire of 330 cm externalized in radial sheath**



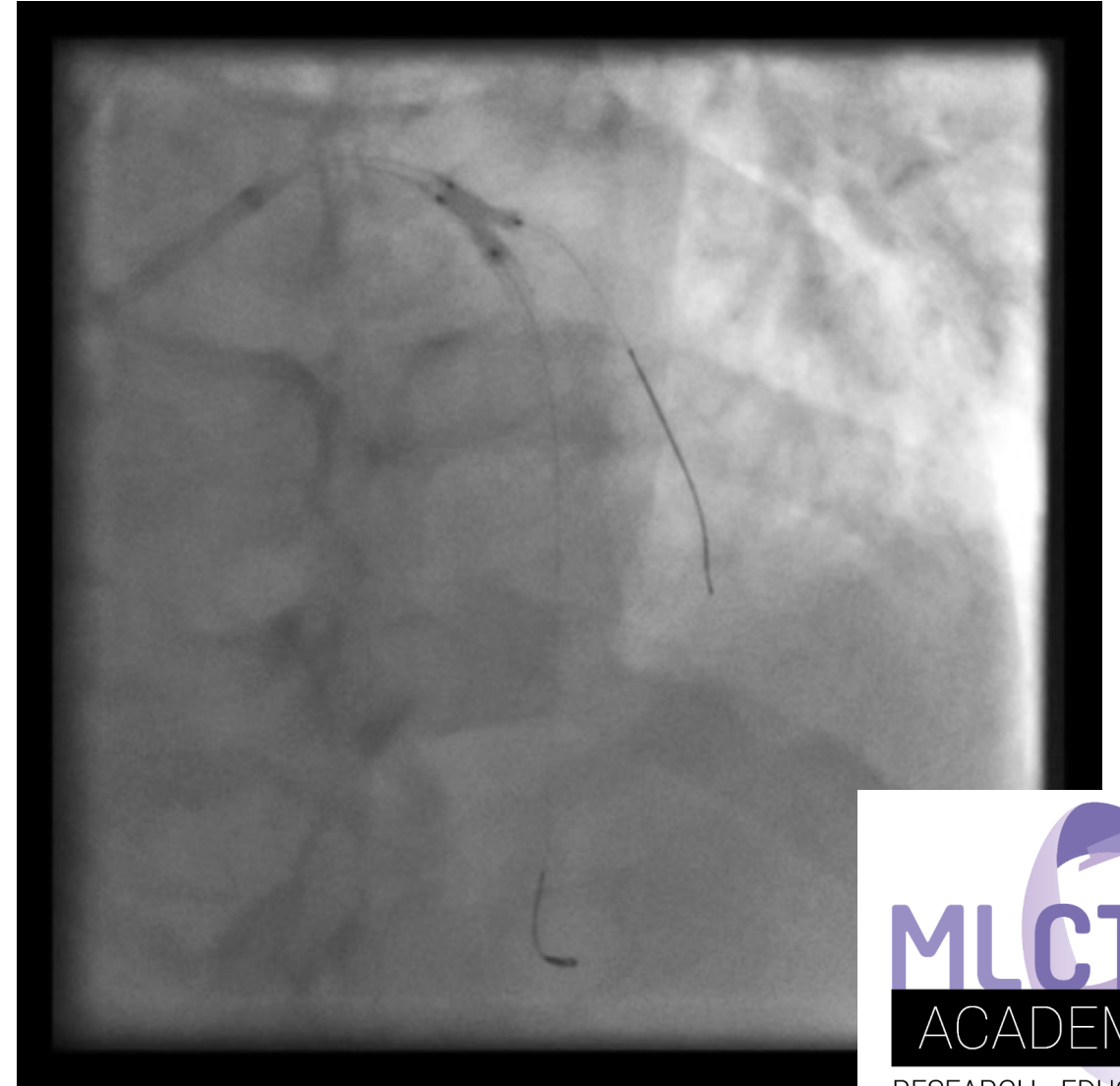
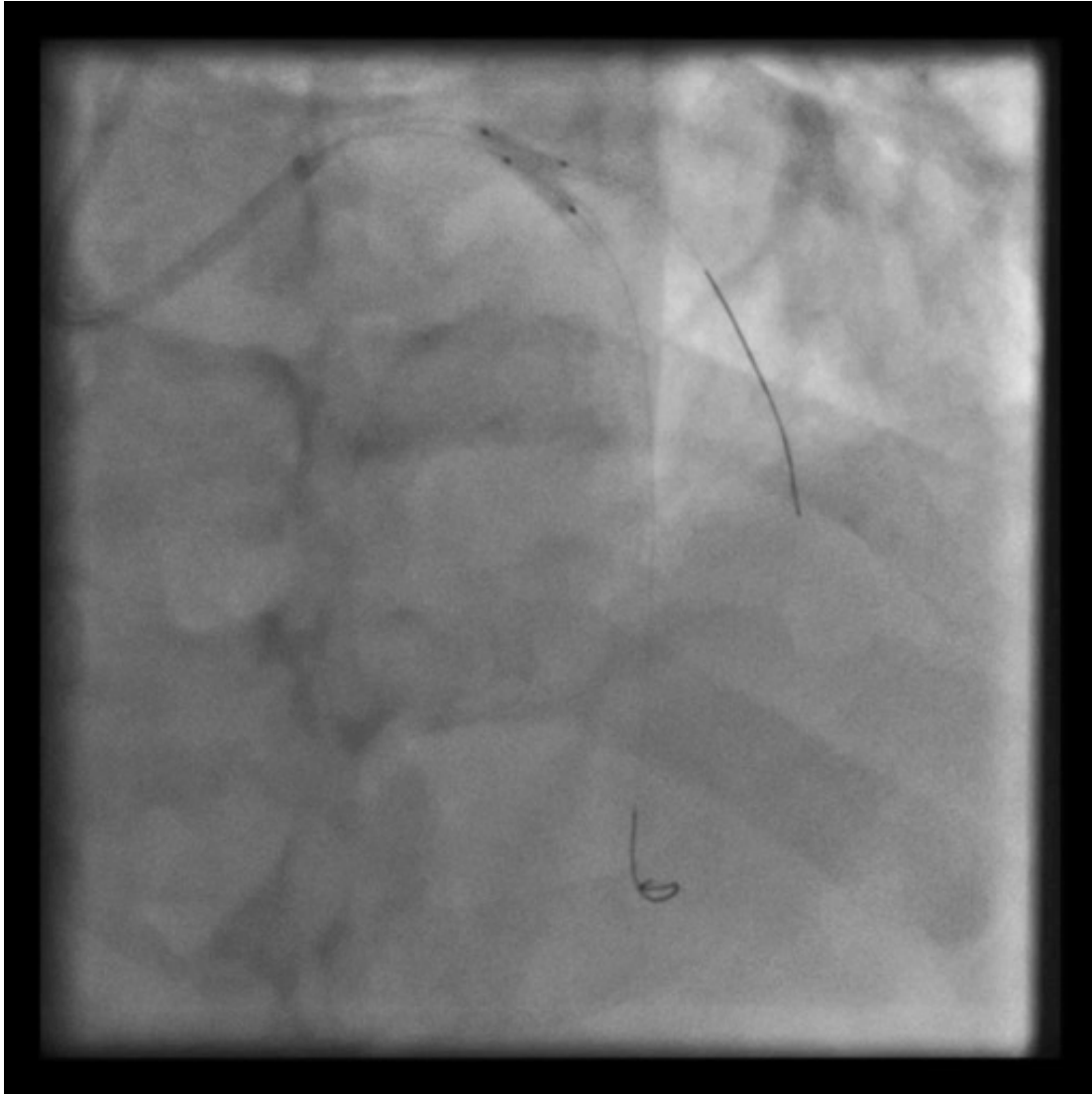
# Antegrade dilatation with 1.0 x 12 mm balloon through LAD stent strut



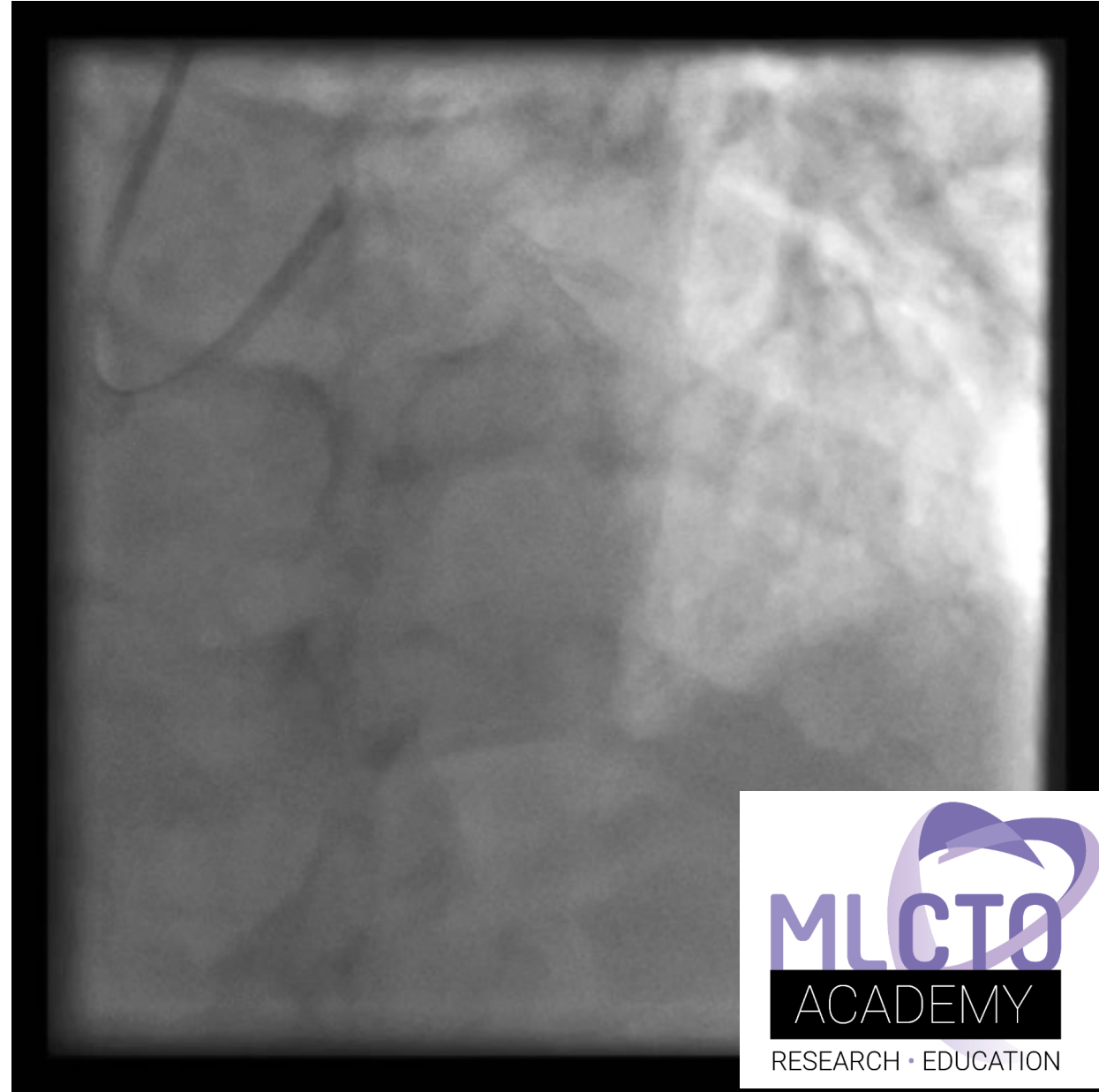
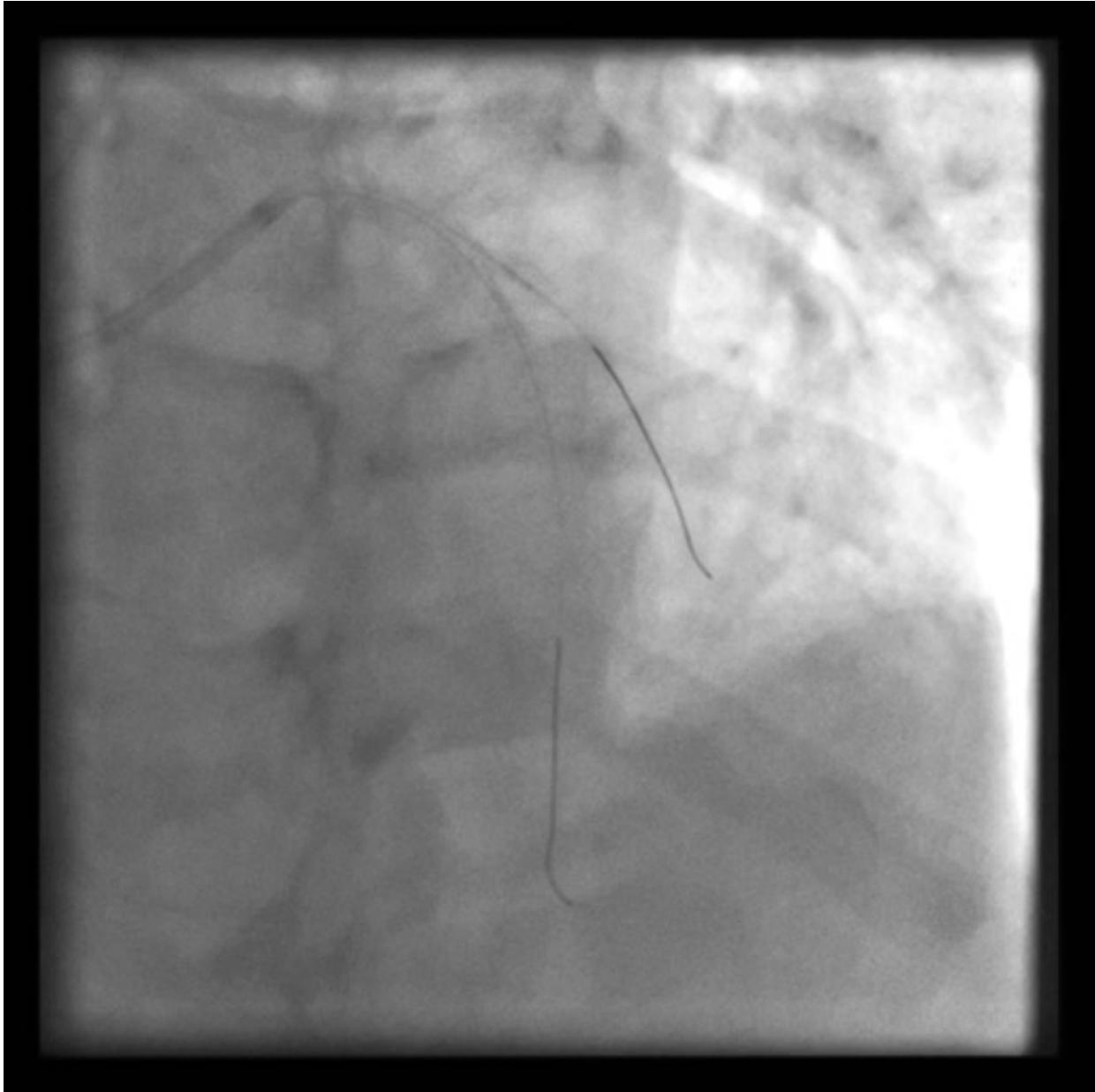
## Successful implantation of Orsiro 2.5 x 15 mm on 2nd diagonal ostium



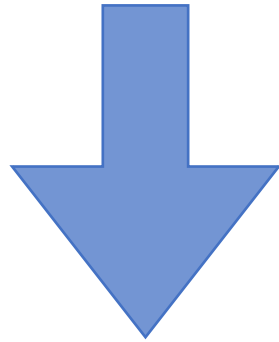
# Final Kissing LAD/Diagonal



# Final result

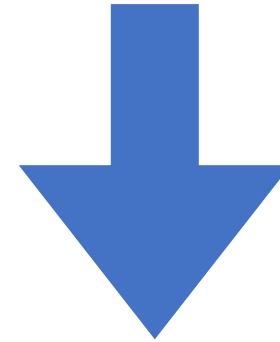


Complex CTO



Ostial diagonal  
Stent covered ostia  
J-CTO score 2

Mini invasive PCI



Radial  
Retrograde with  
single access  
7F sheathless (6F)

Most but not least....

At three month follow up, patient remain free  
of angina

