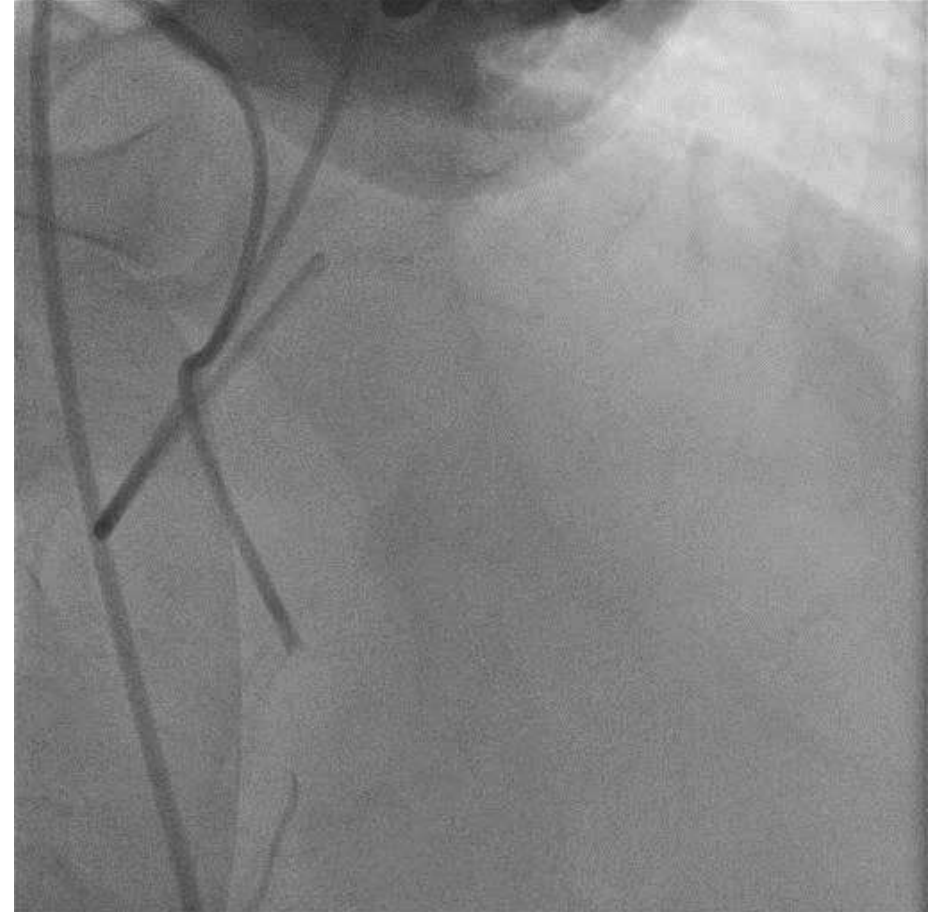
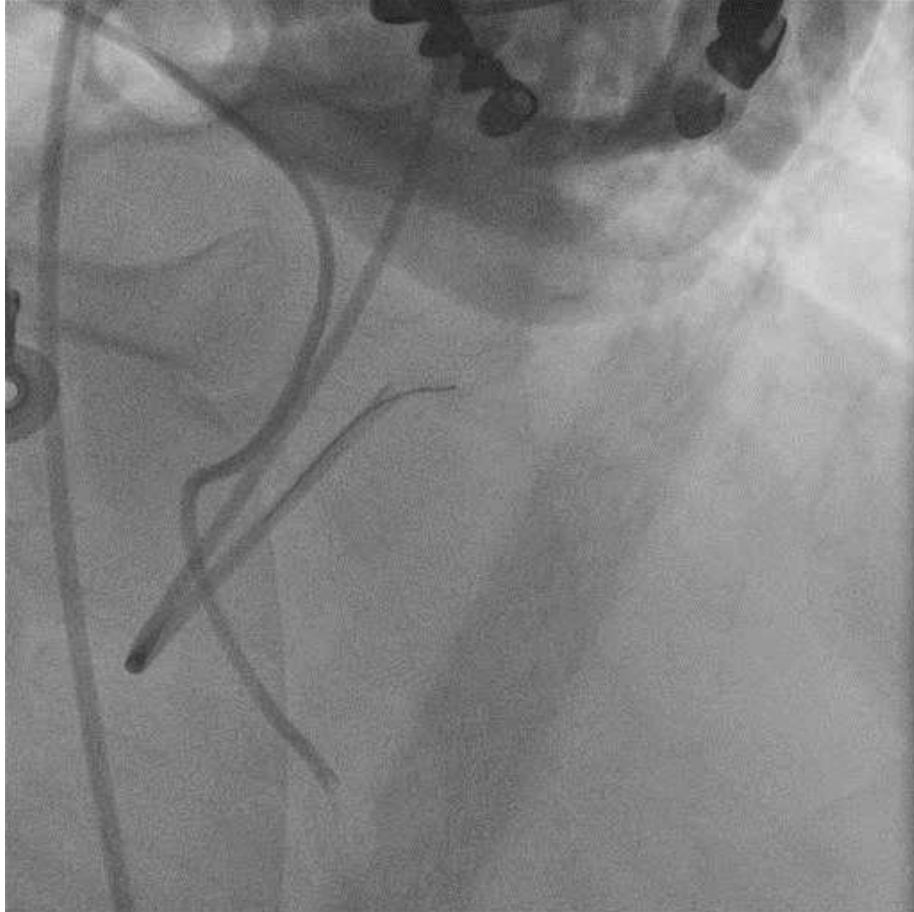


# **‘Double’ parallel wire technique with Dual lumen MC**

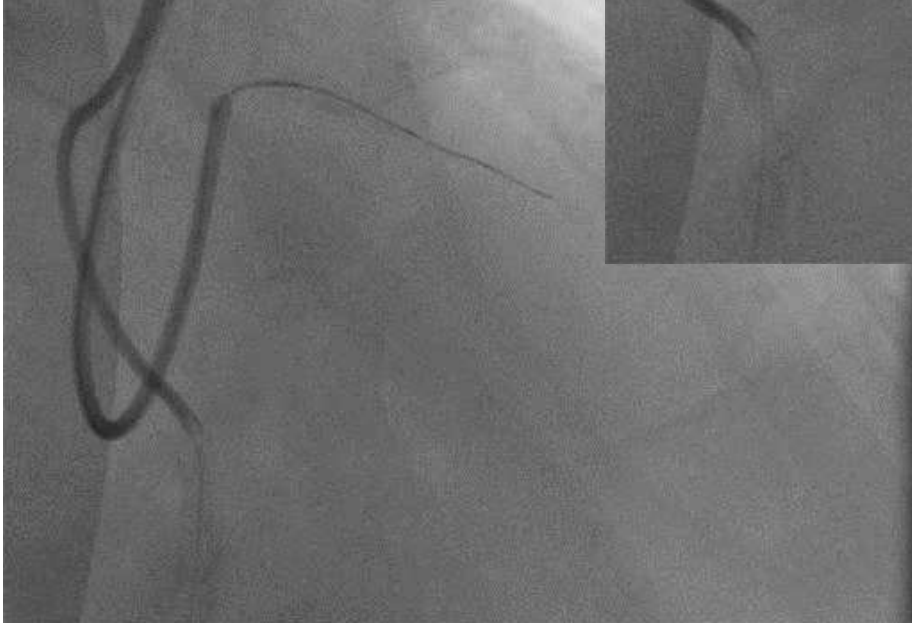
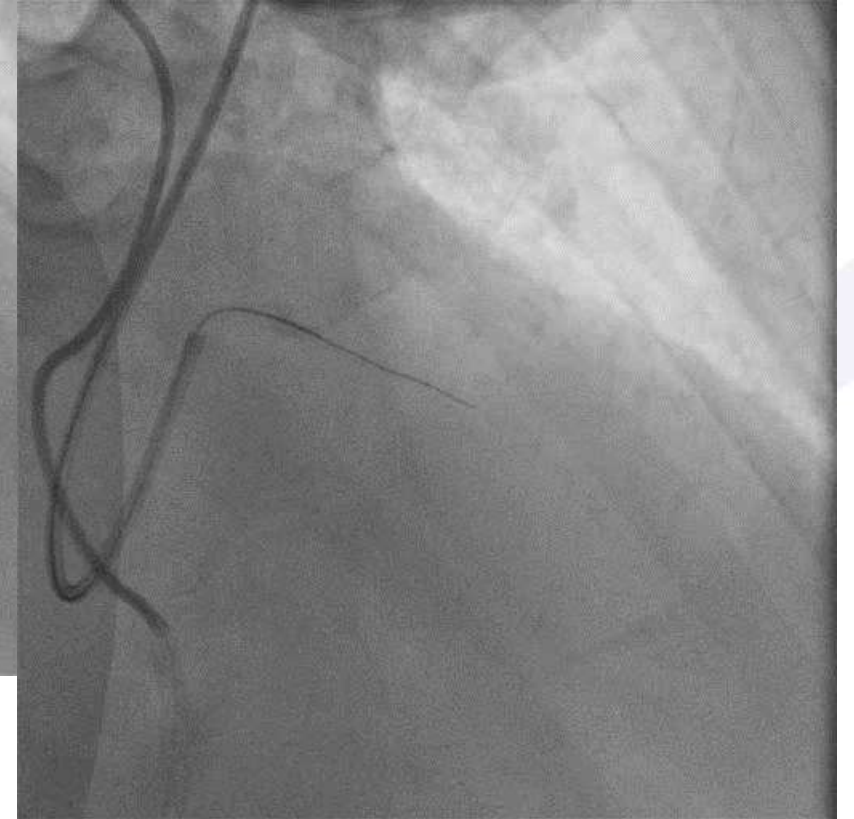
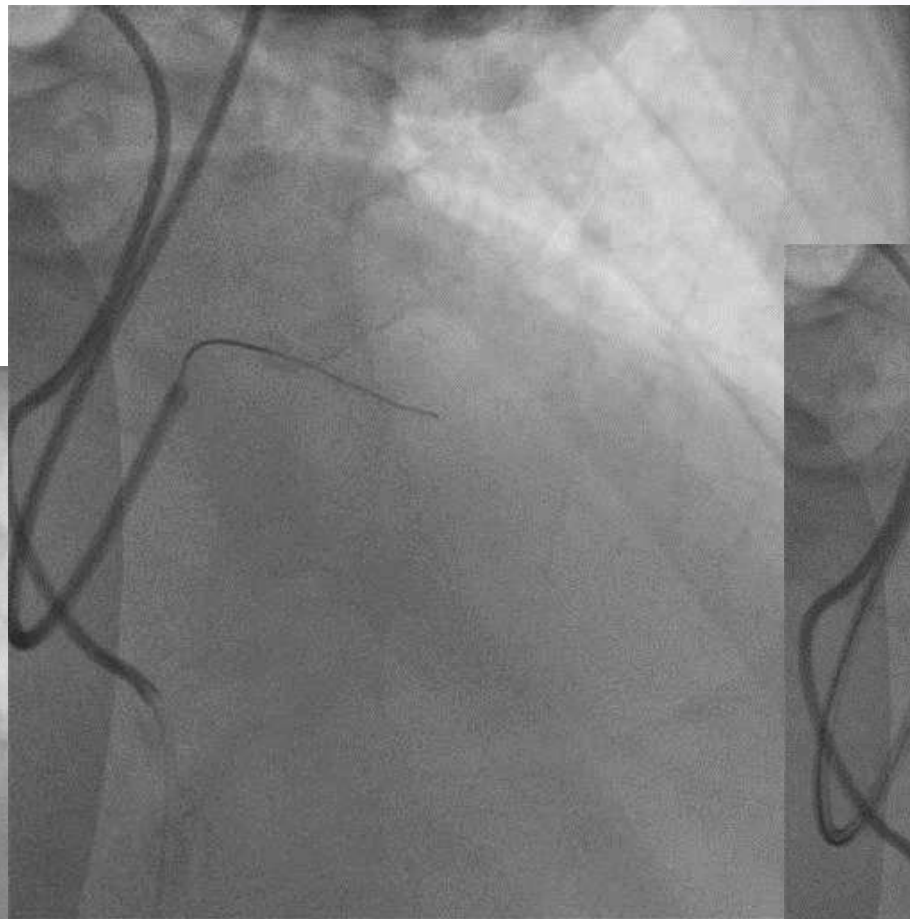
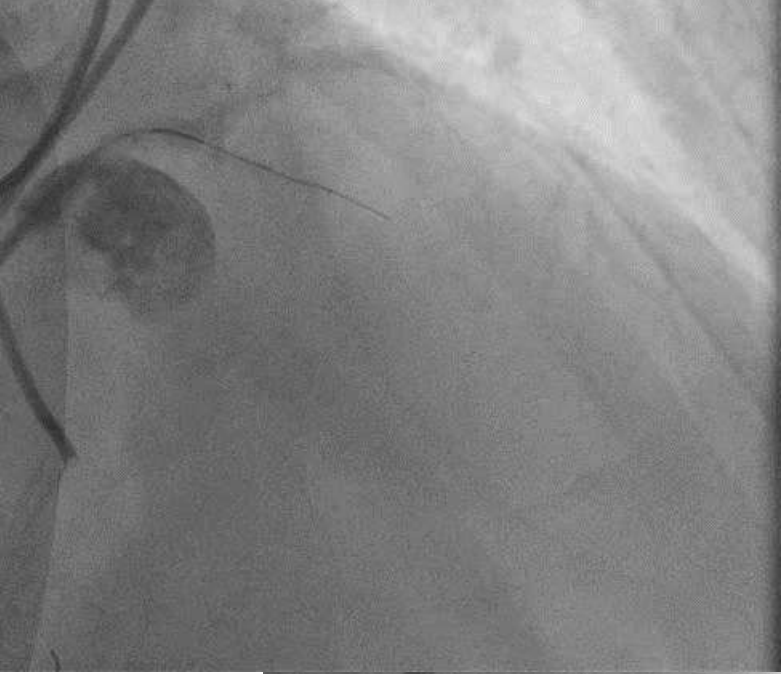
# The case

- **LAD CTO prox/mid part , collaterals from RCA**
- **Try in another center stucked Conquest pro 12**
- **Calcified lesion (?)**
- **We decided to try parallel wire technique**

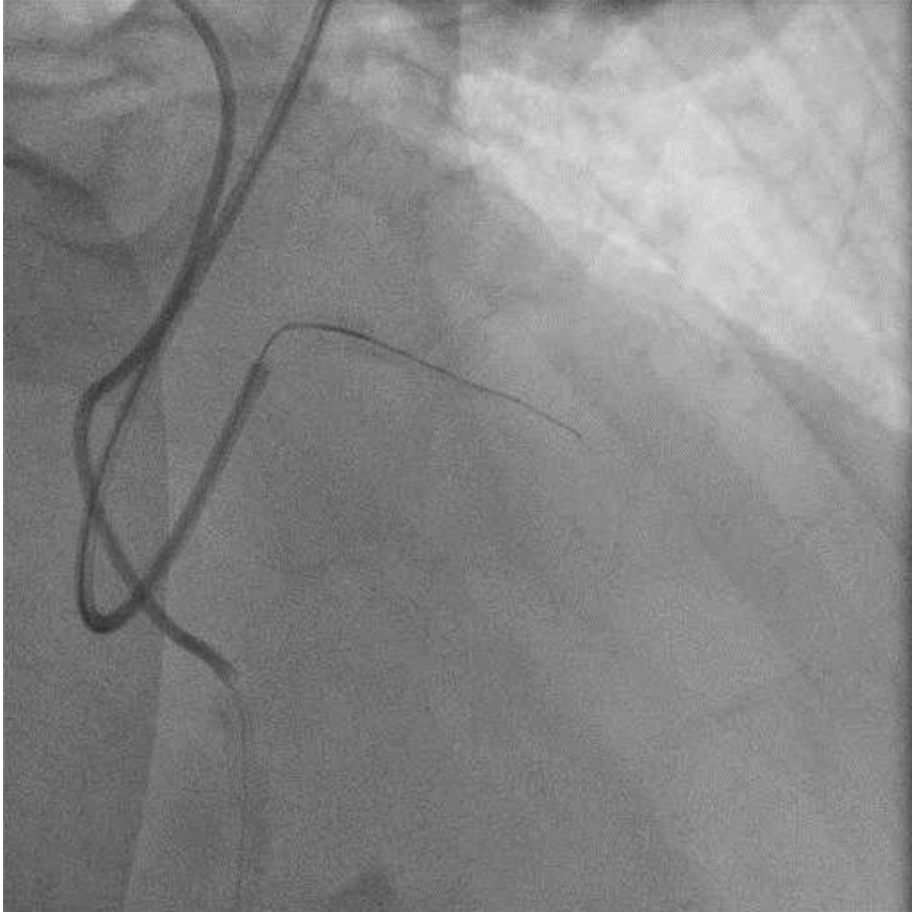
# LAD CTO prox/mid part 2<sup>nd</sup> try



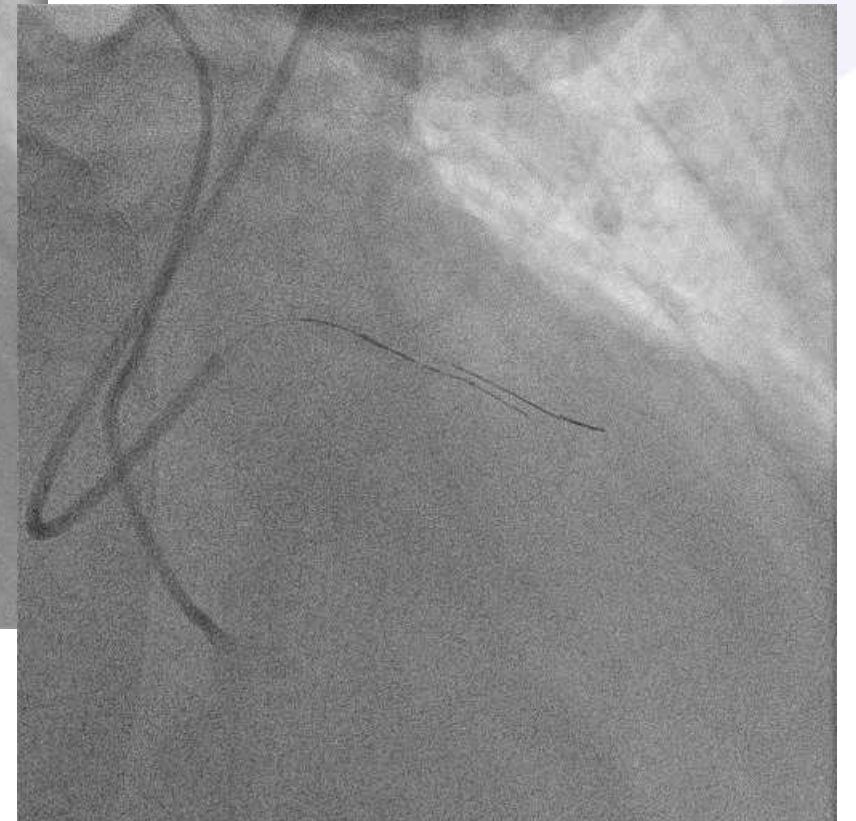
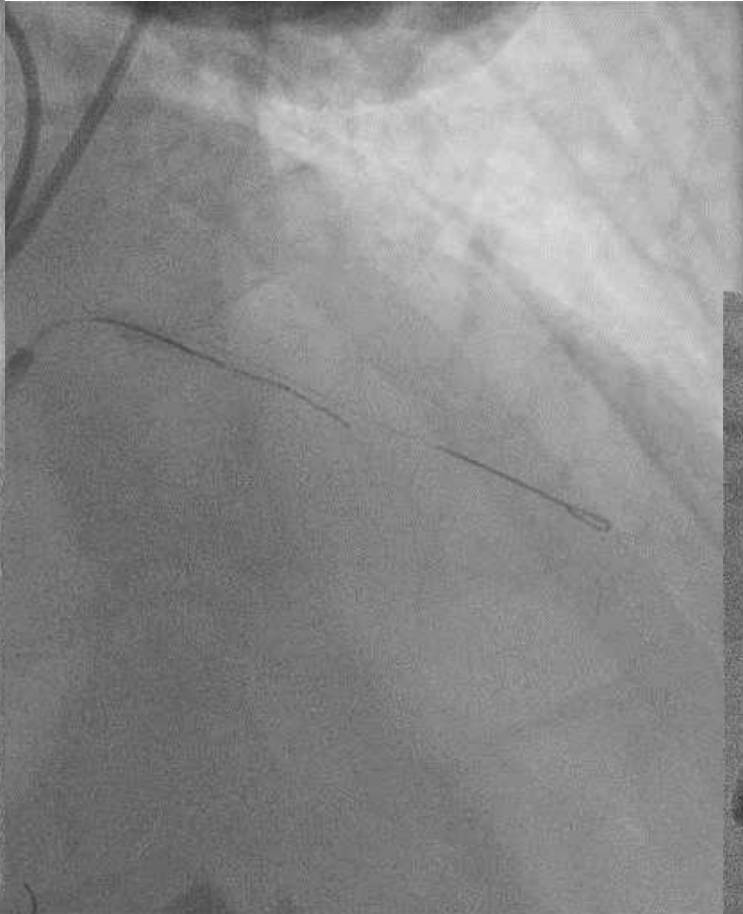
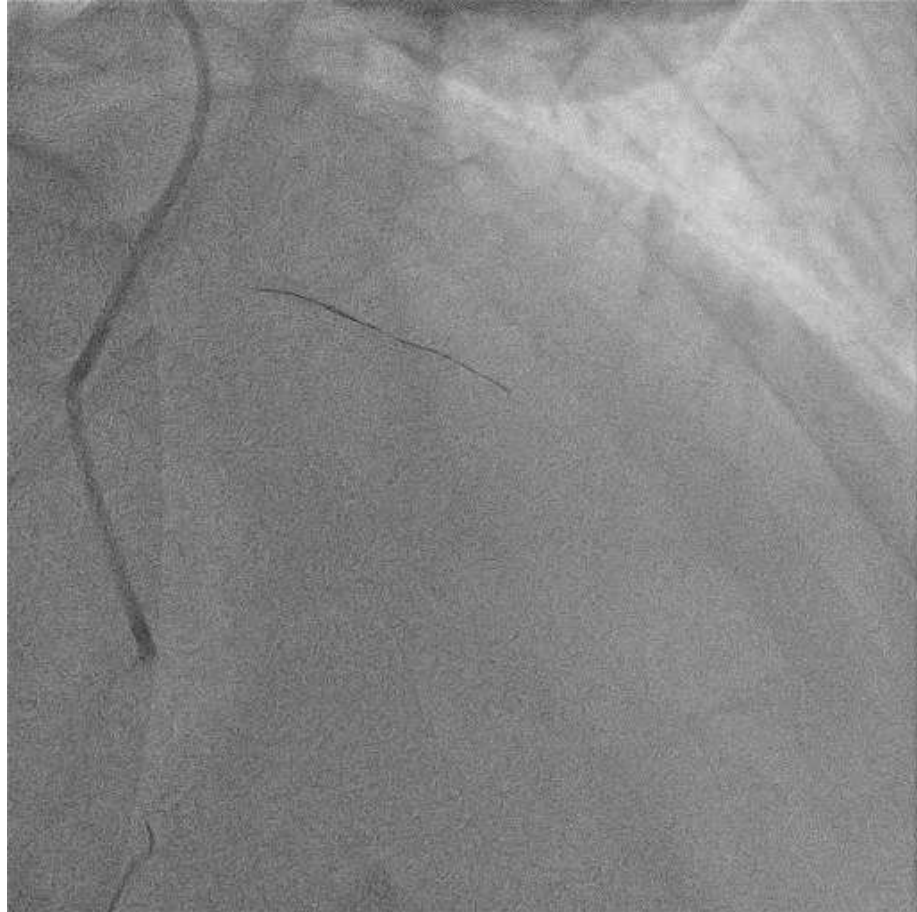
**AWE**



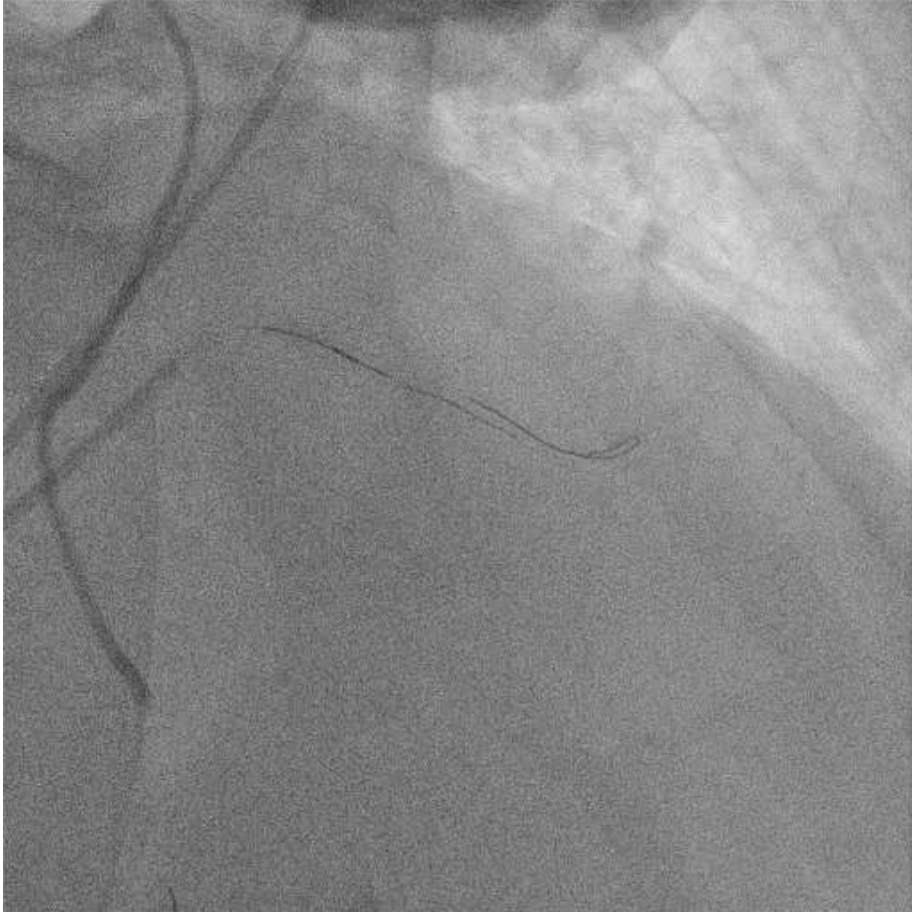
# Wire stuck antegradely we decided to use dual lumen Mc



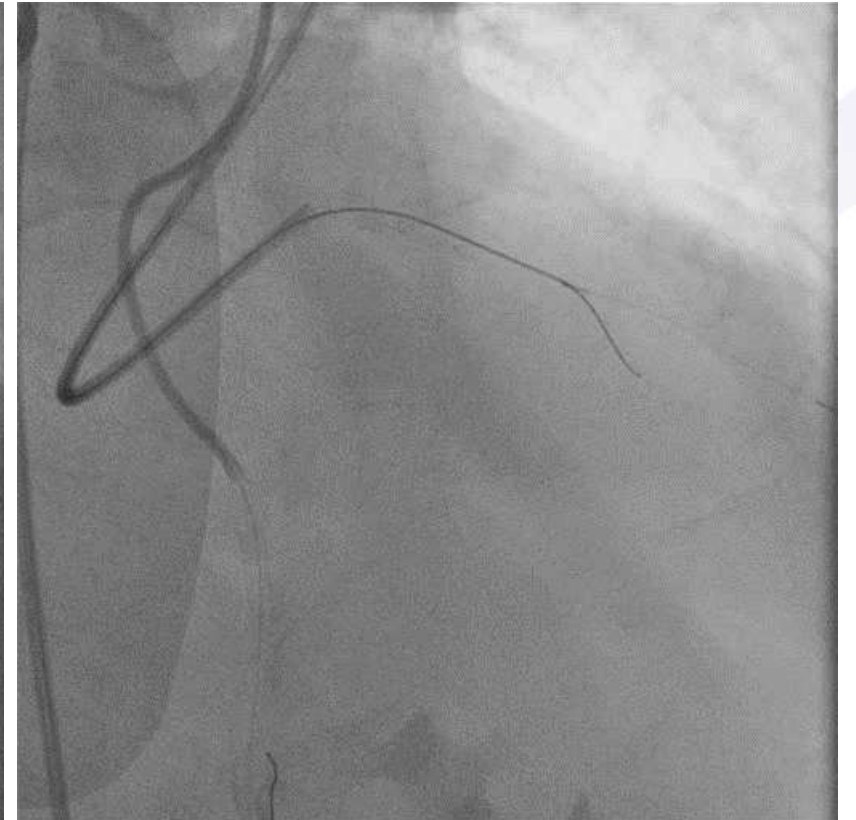
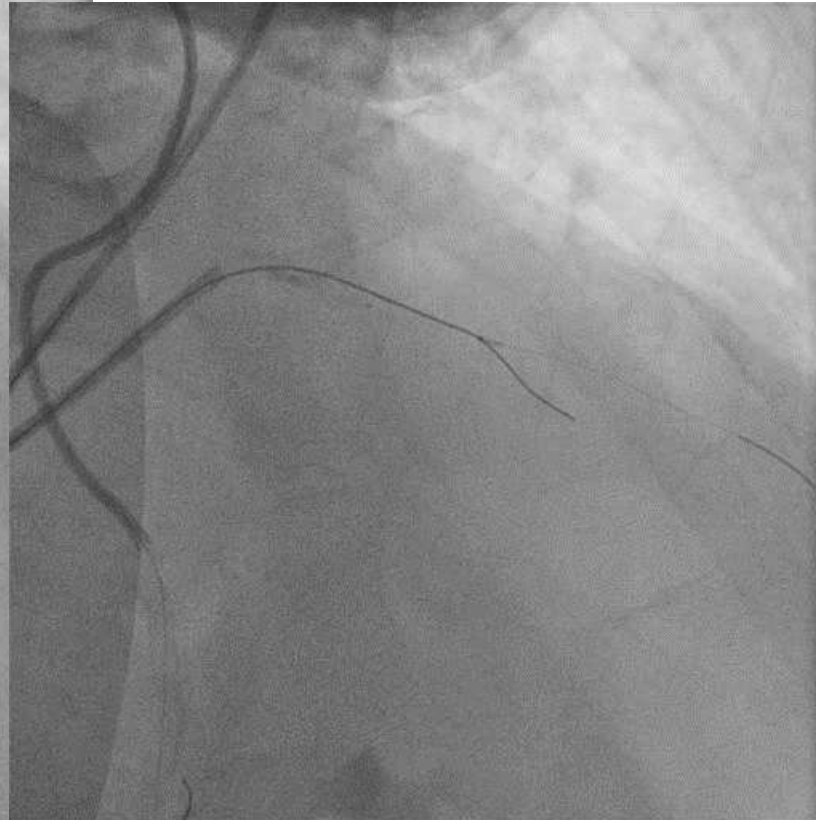
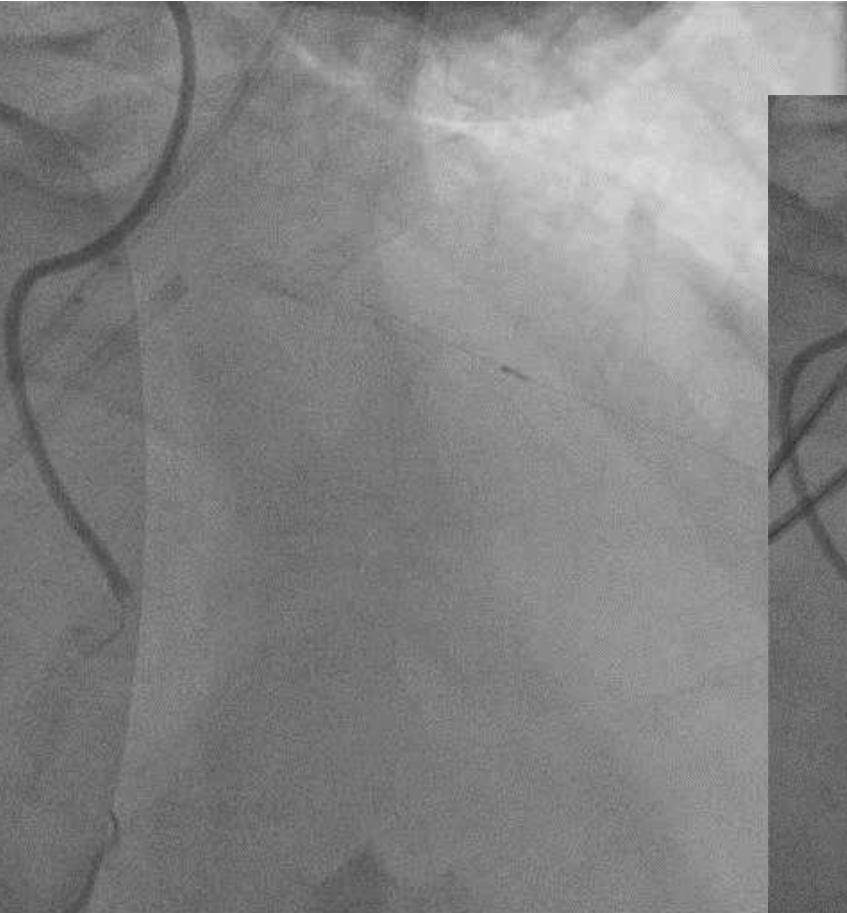
# SASUKE AND PARALLEL WIRE



# GLADIUS MG TO DIAGONAL with Knuckle

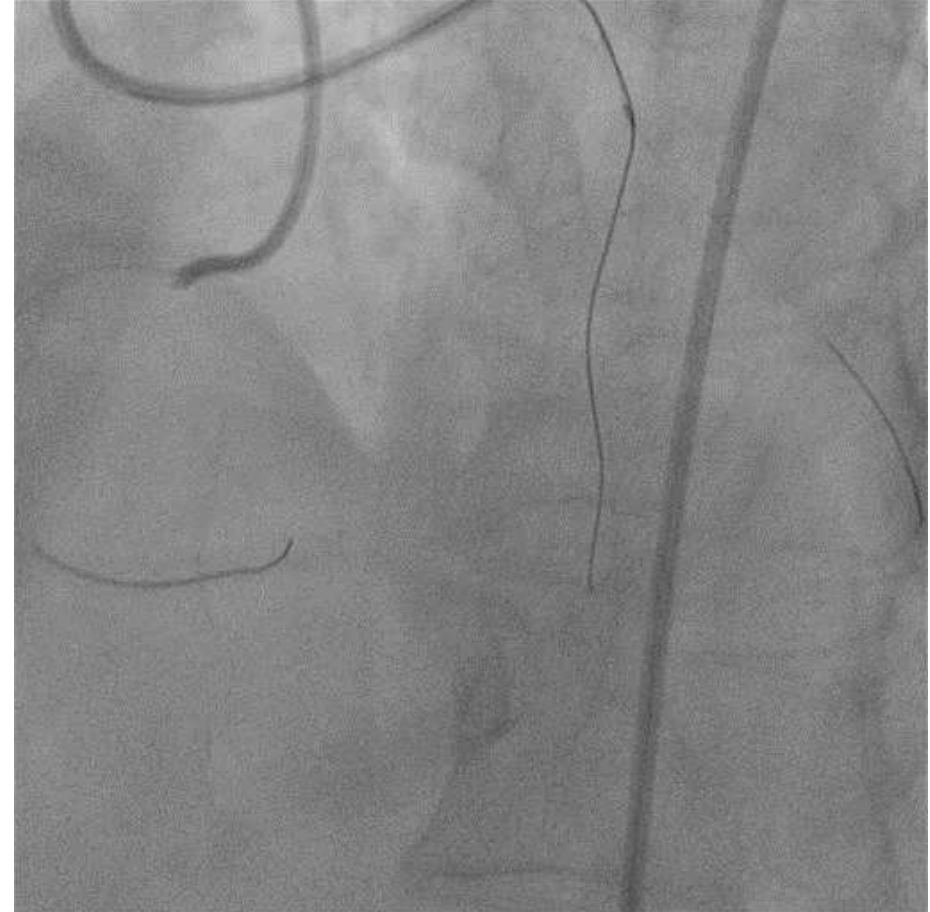
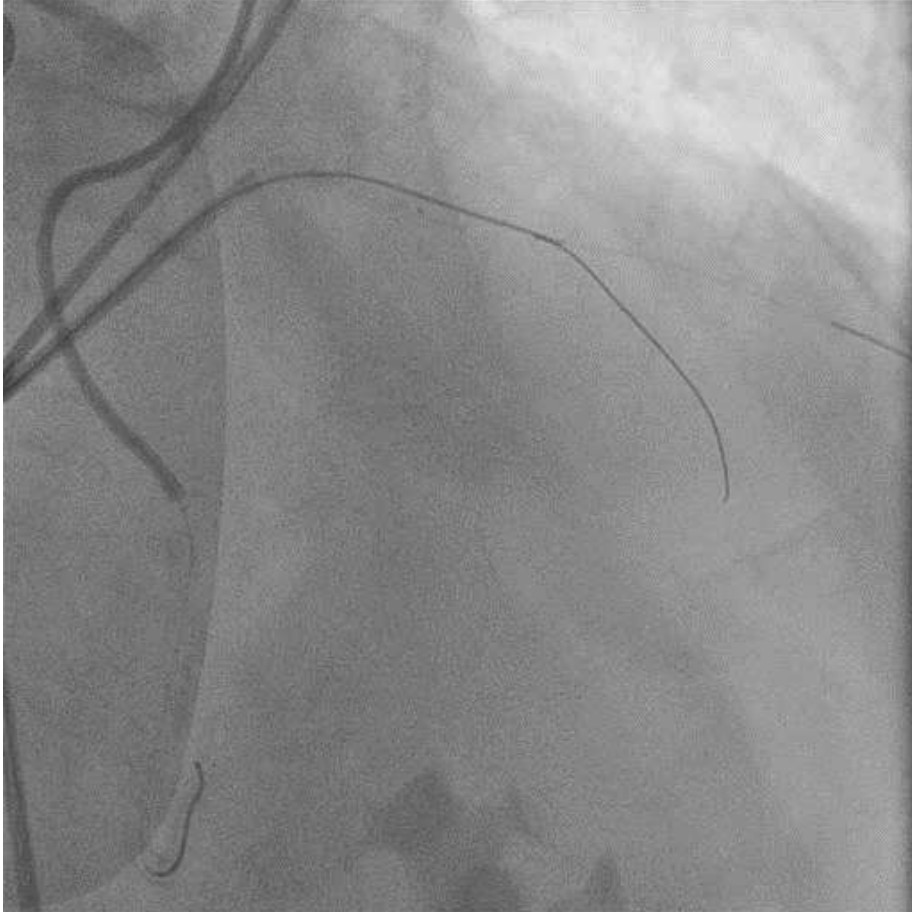


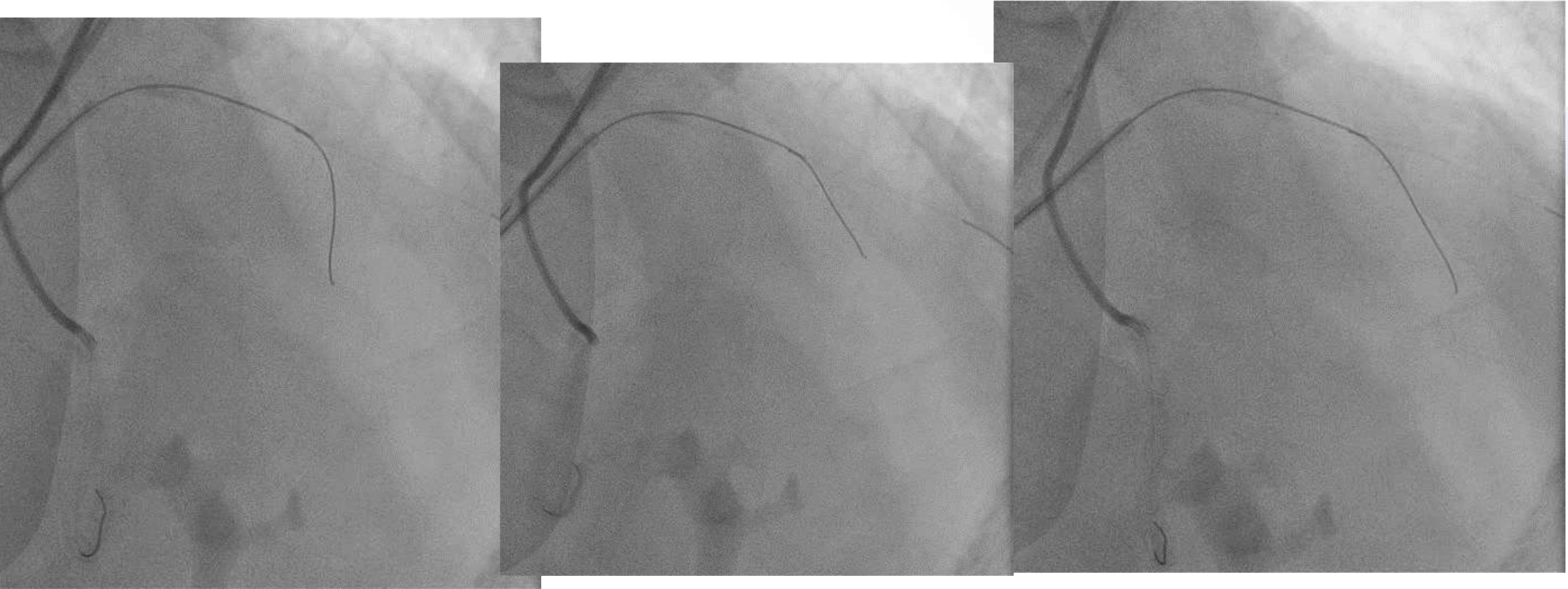
# Exchange wire and Sasuke to Diagonal and again MG (from side hole)

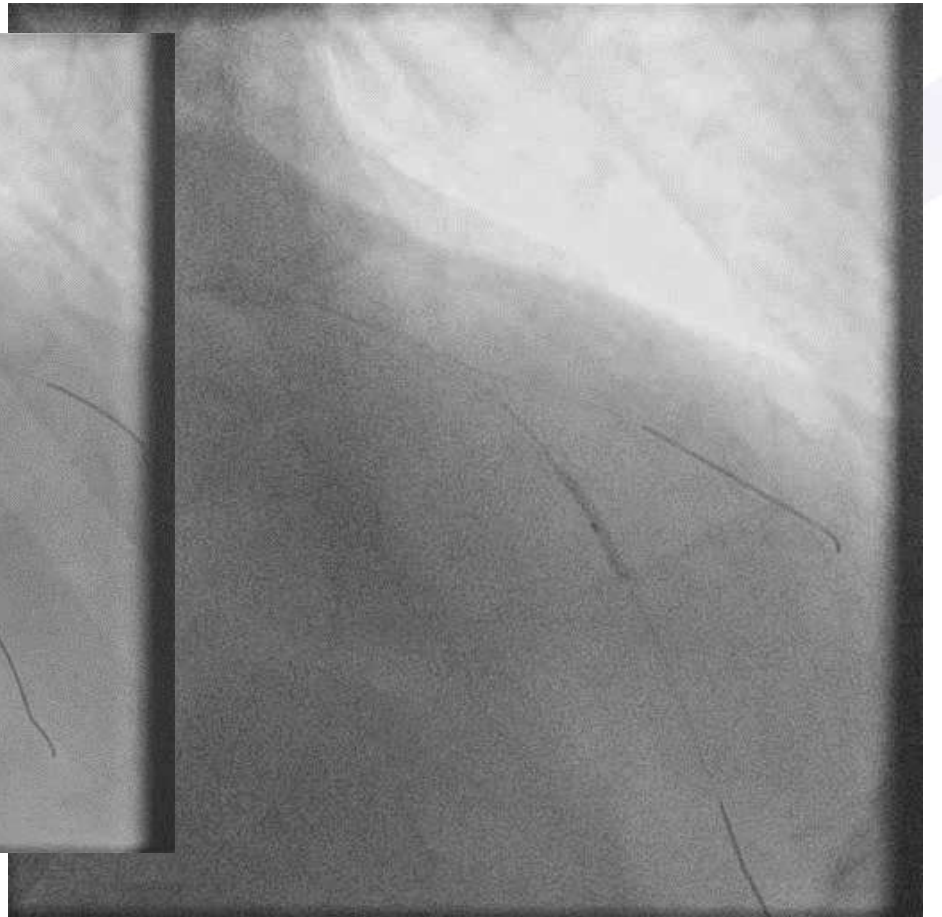
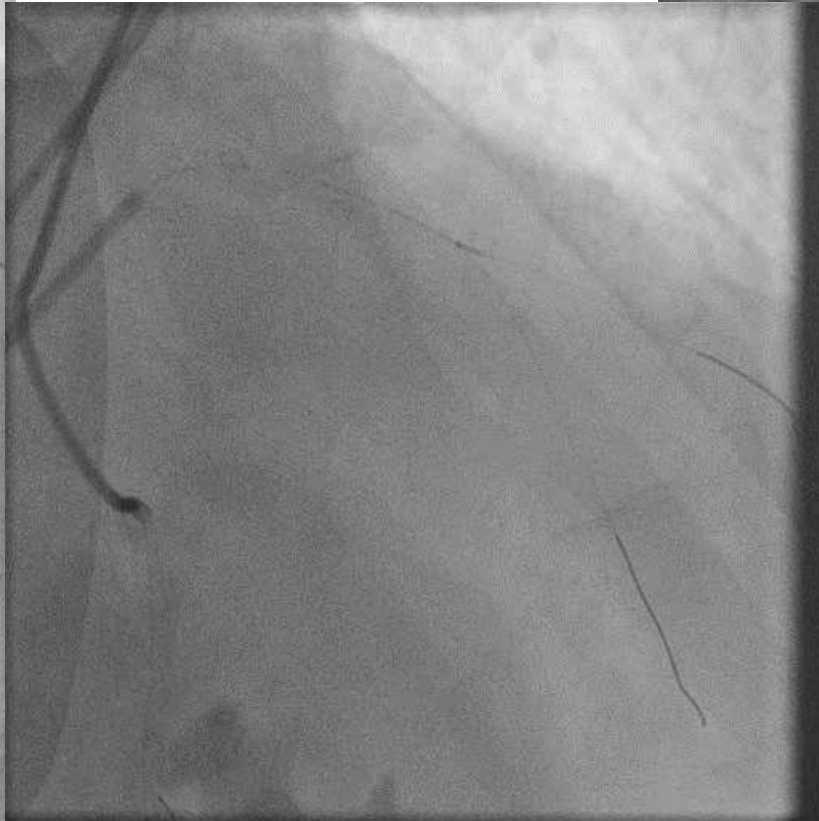




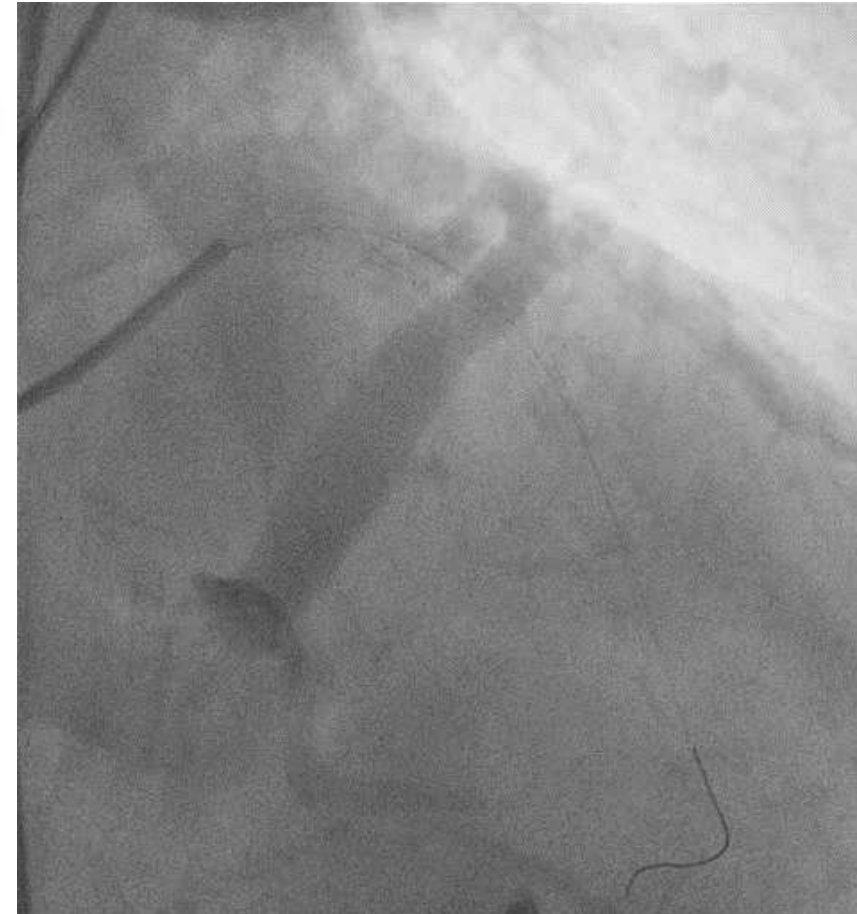
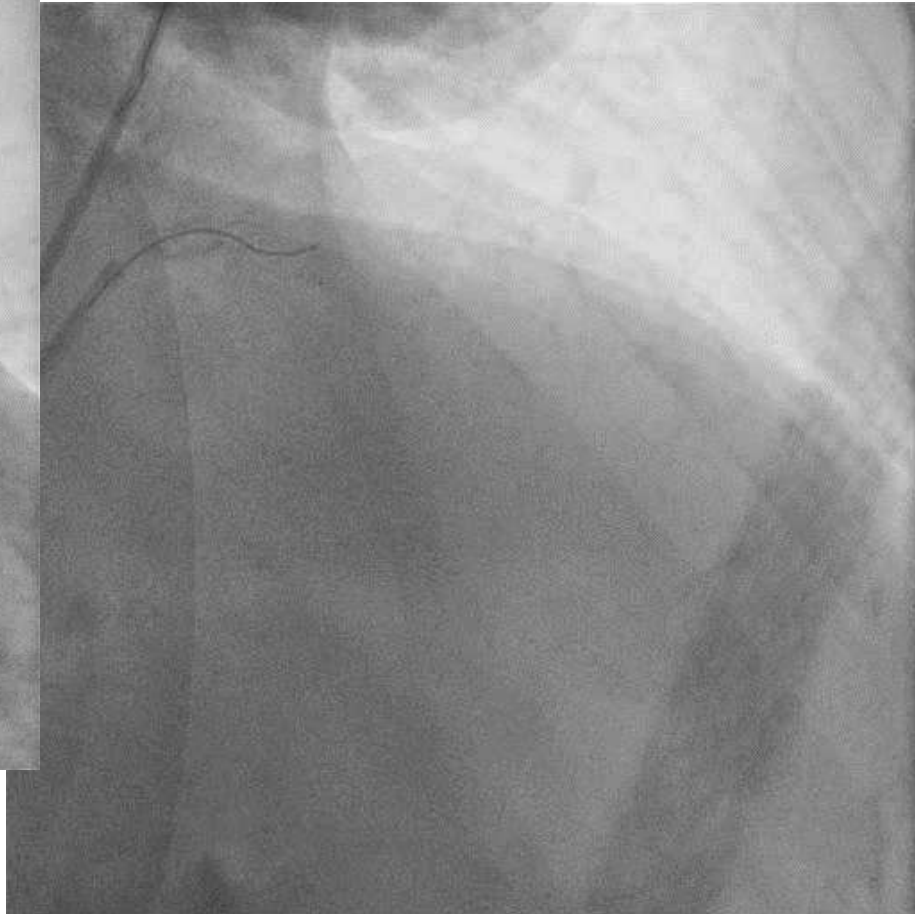
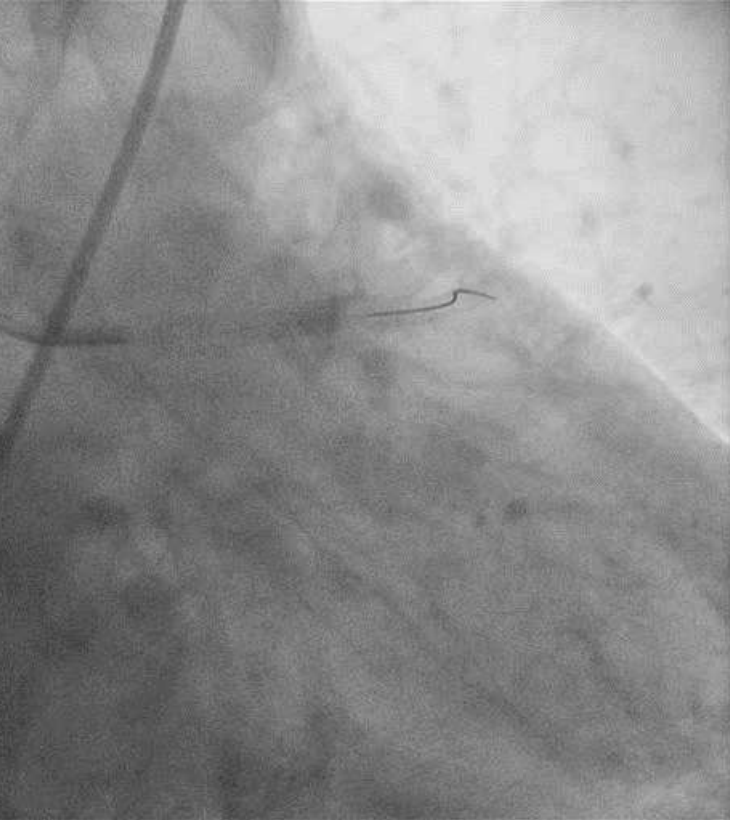
# Distalto true lumen finally







**final**



# Key learning points

- **Parallel wire technique can achieve fine result**
- **Dual lumen MCs work and facilitate parallel wire**
- **Fine demonstration of double parallel wire technique with use of Dual Lumen MC twice first in branch and then in main distal vessel**
- **Gladius MG game changer!**