

Successful IVUS guided antegrade fenestration reentry two months after investment

Marouane Boukhris MD, FESC, DRCPSC
CHU Dupuytren, Limoges, France

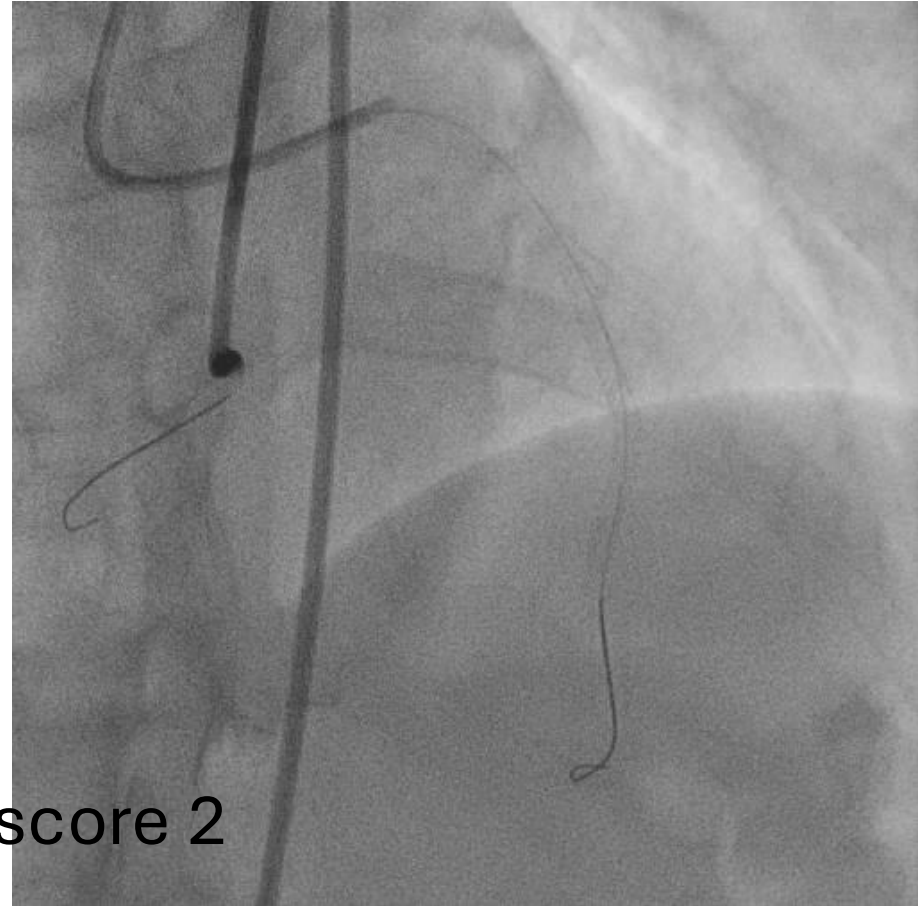
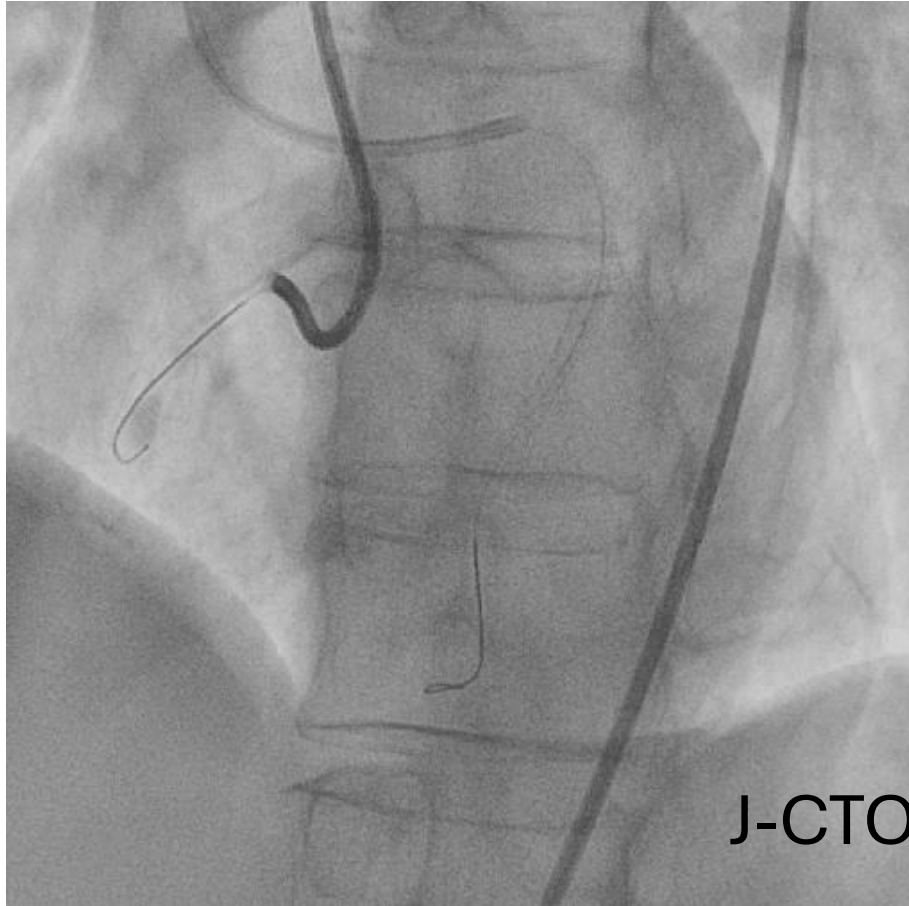
Successful IVUS guided antegrade fenestration reentry two months after investment

Marouane Boukhris MD, FESC, DRCPSC
CHU Dupuytren, Limoges, France

Case Summary

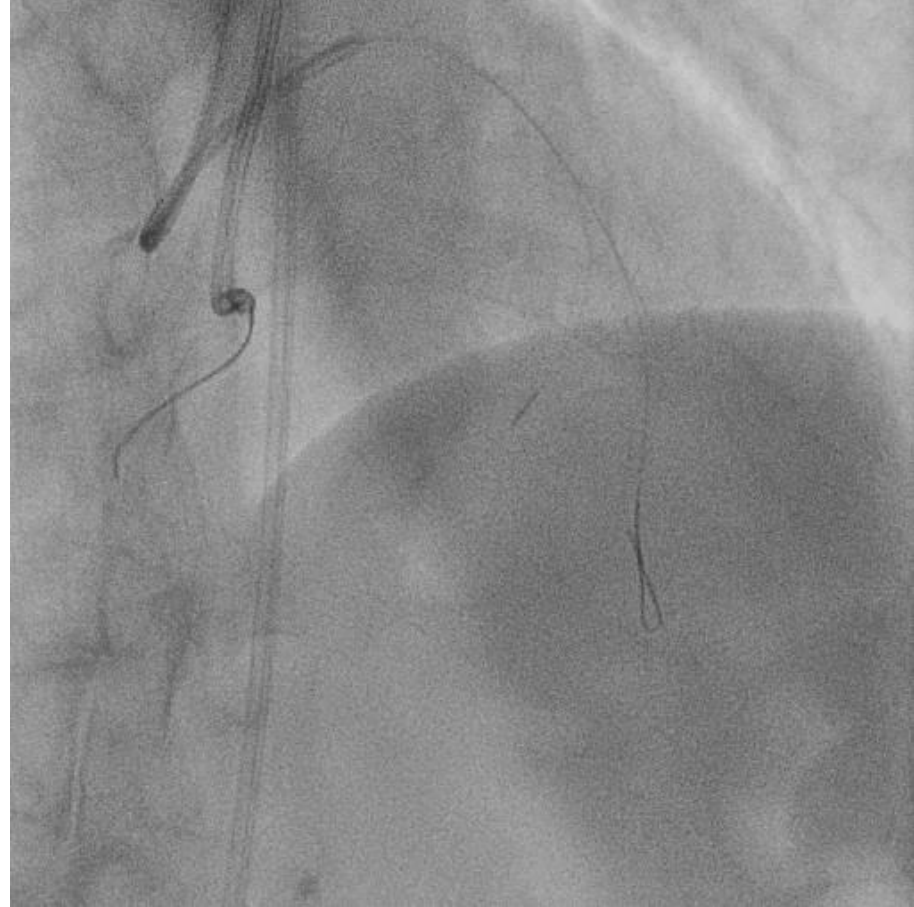
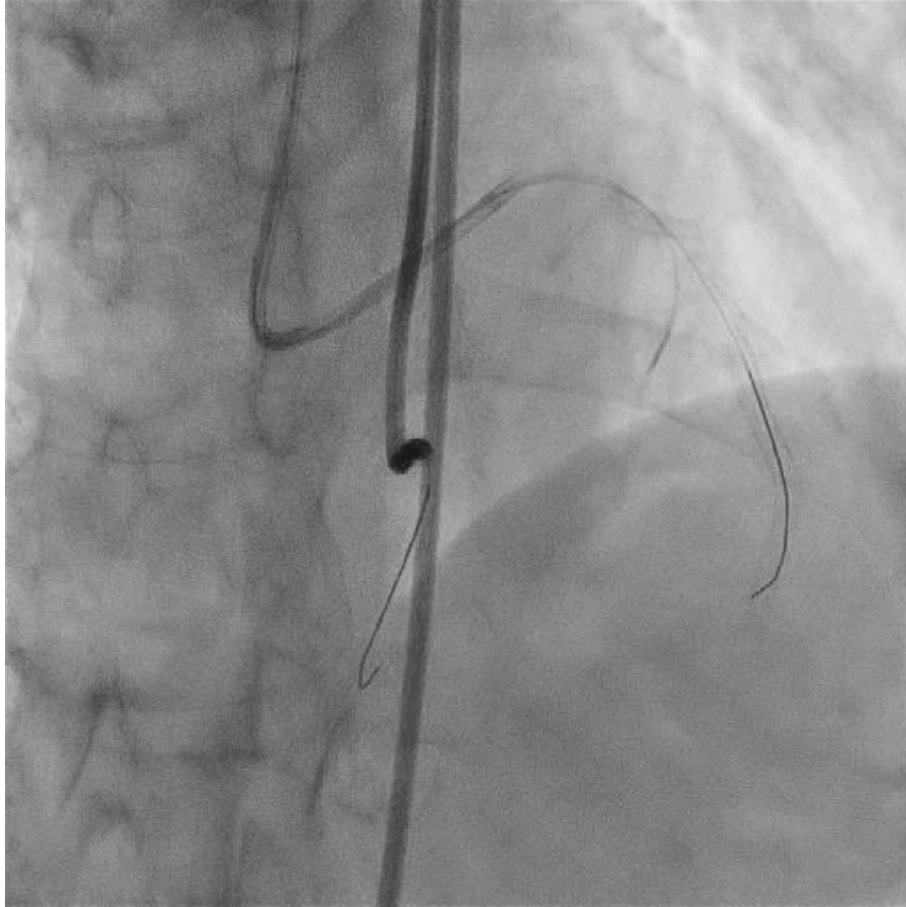
- 69 year-old woman
- Ex smoker
- Prior PCI of LCx
- Clinical presentation: anterior STEMI
- PCI LAD-D1 (inverted TAP technique)
- Mid RCA CTO
- TTE: preserved LVEF
- eGFR: 61ml/min

- Dual access: RR 6Fr, RF 7fr

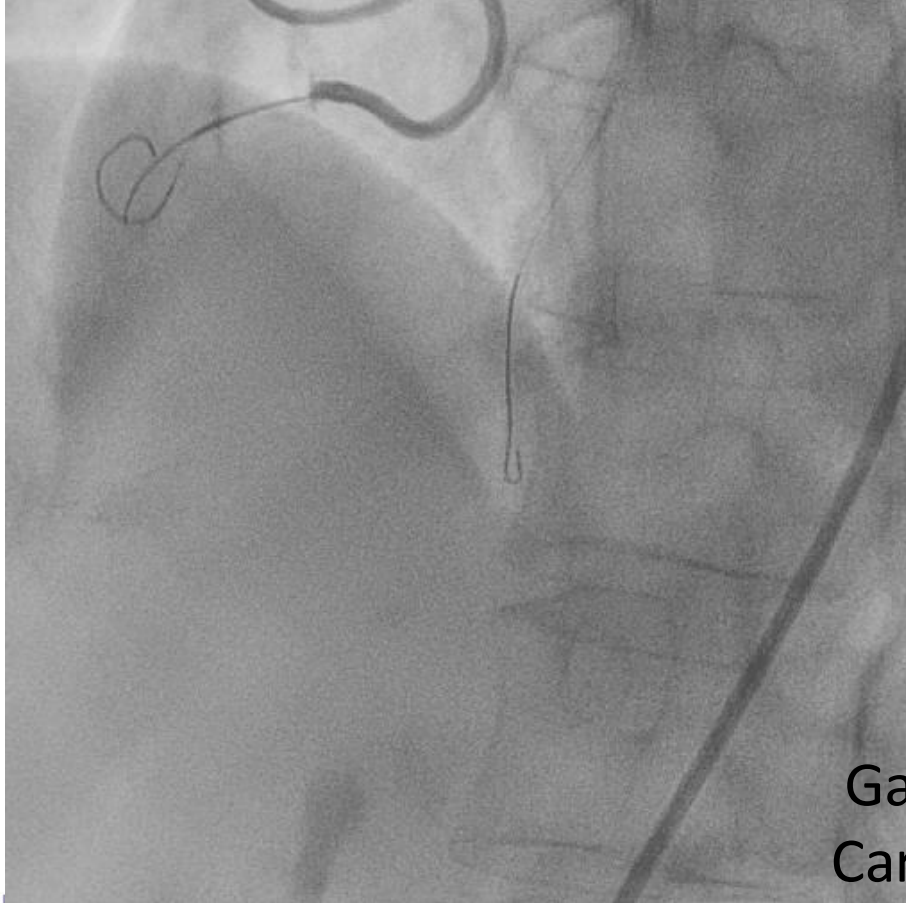


J-CTO score 2

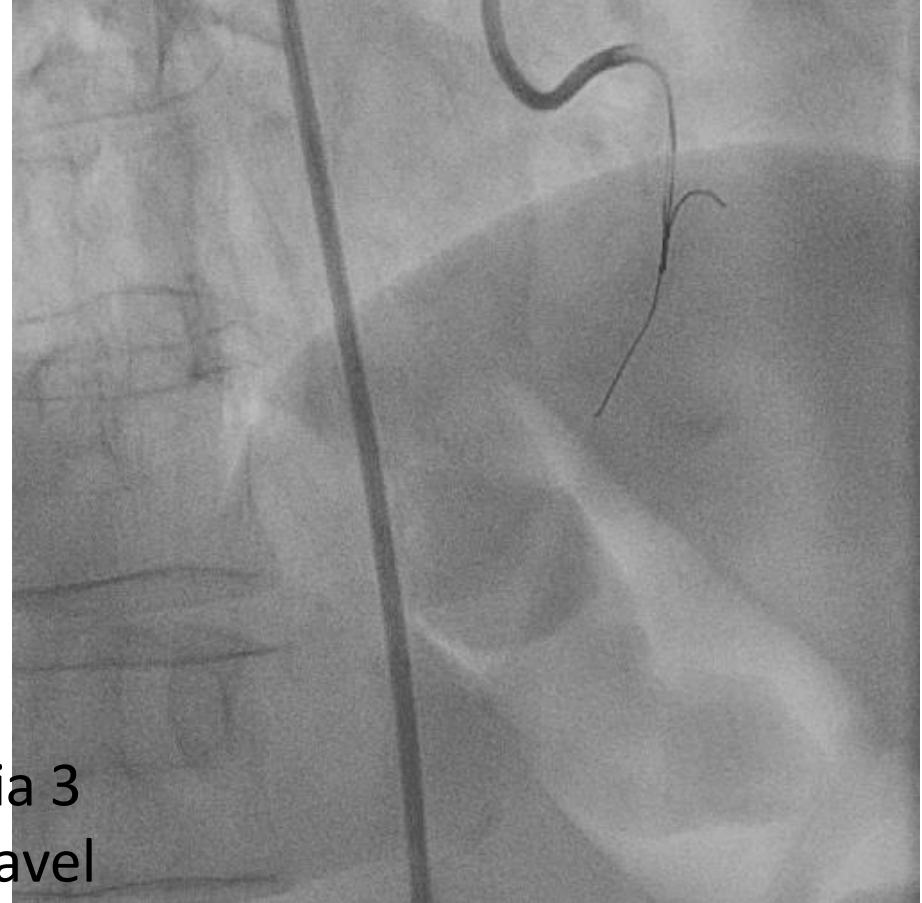
Retro first option:
failure of crossing 2 different septal branches



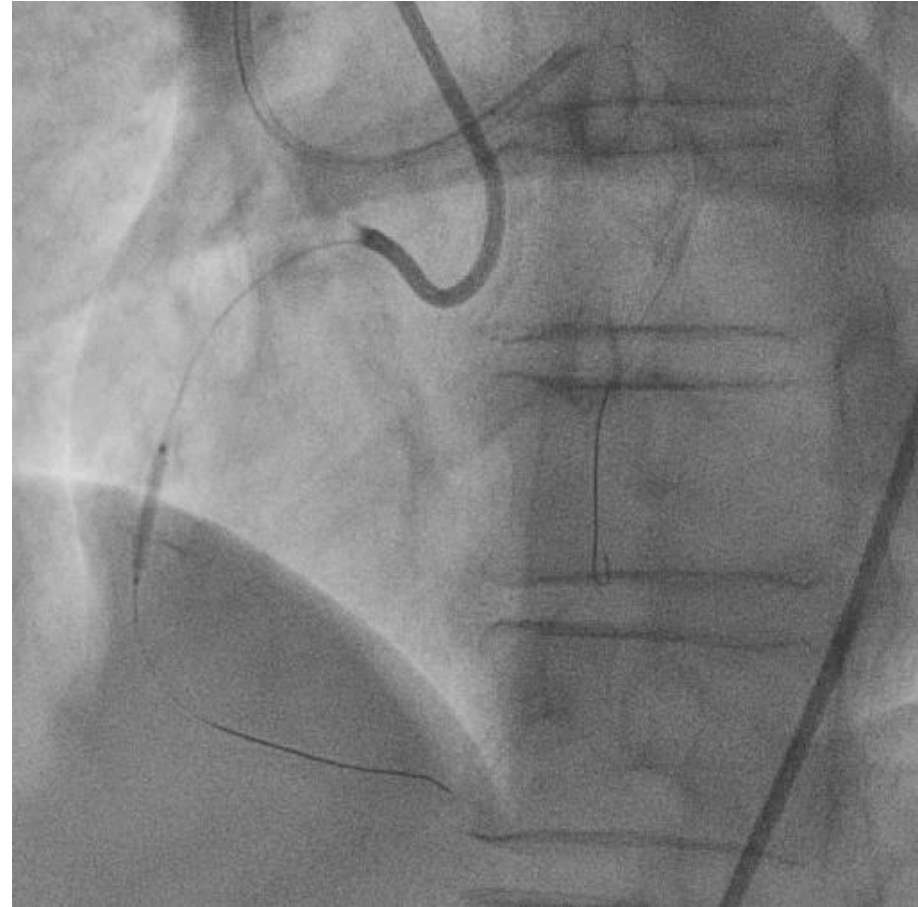
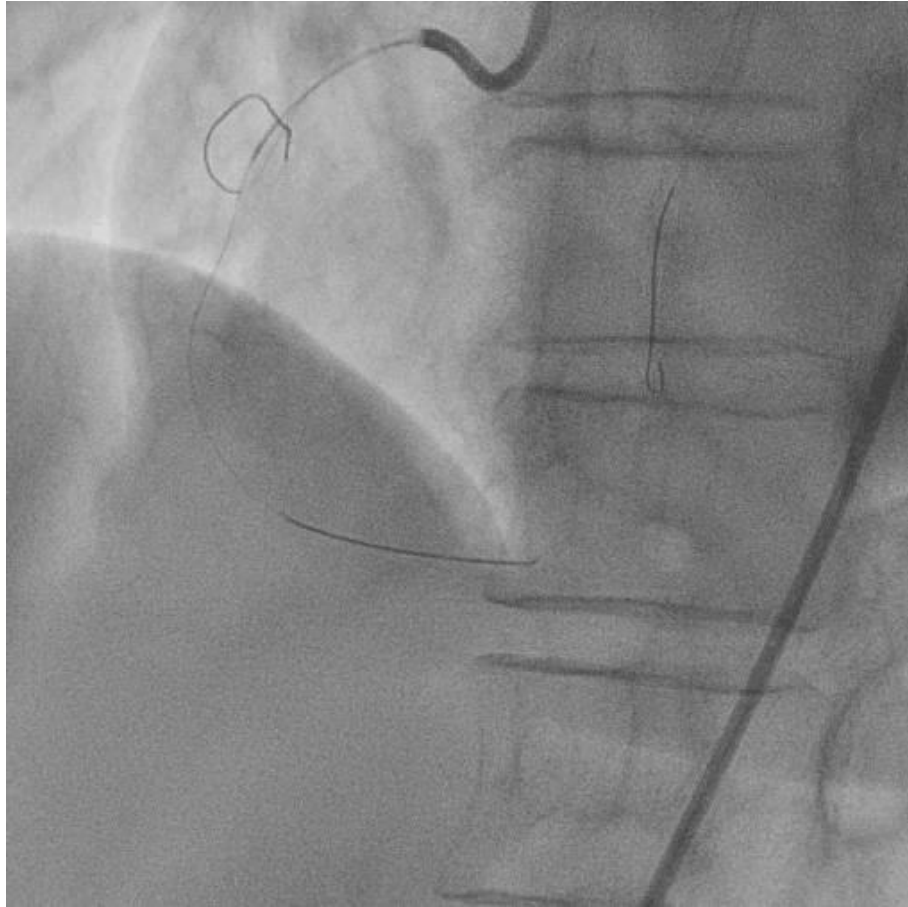
Antegrade approach



Gaia 3
Caravel

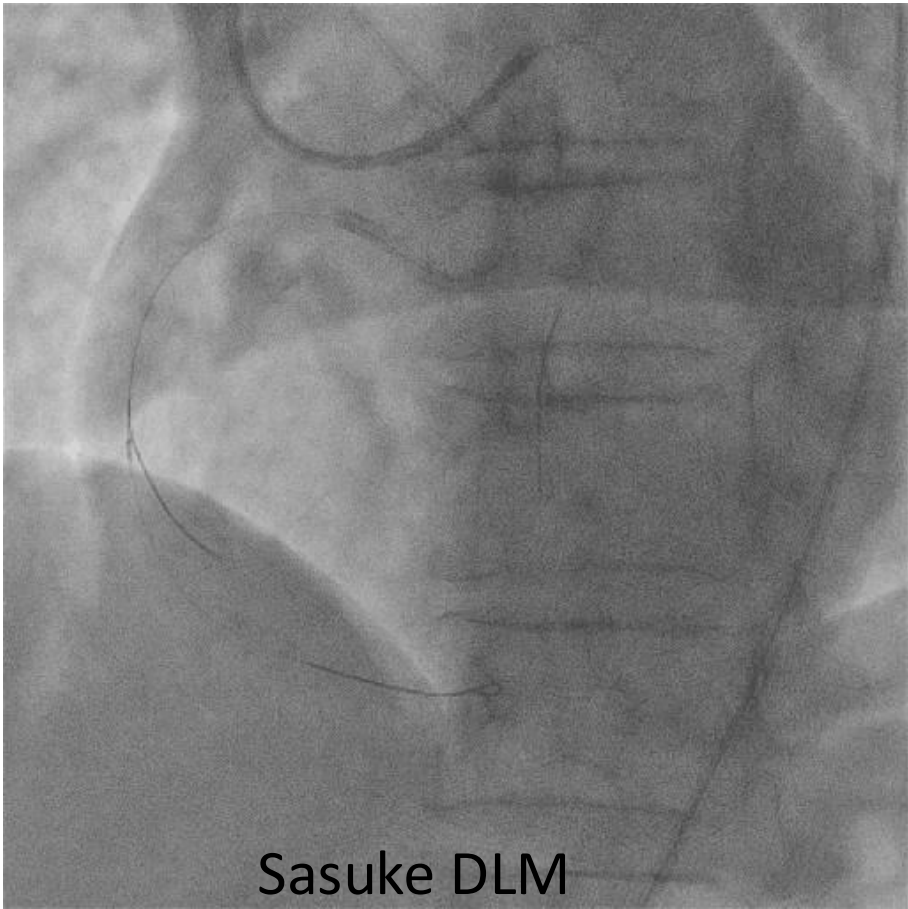


Crossing in side branch



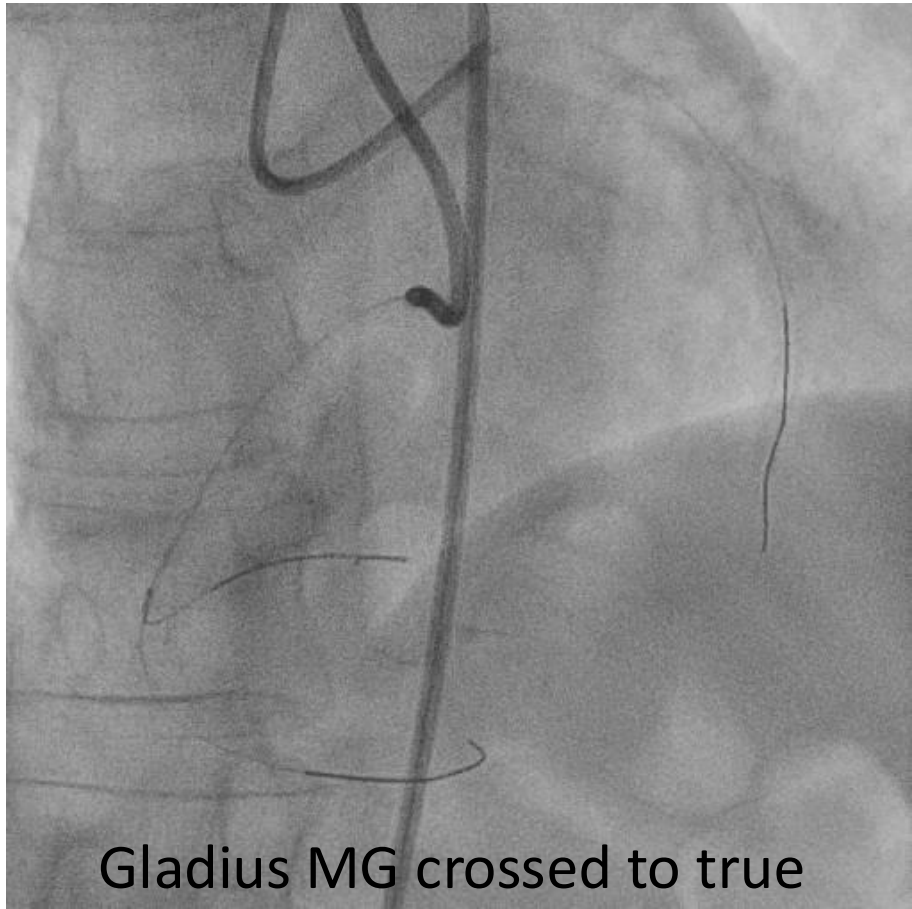
Predilation

Antegrade Approach



Sasuke DLM

Gladius MG

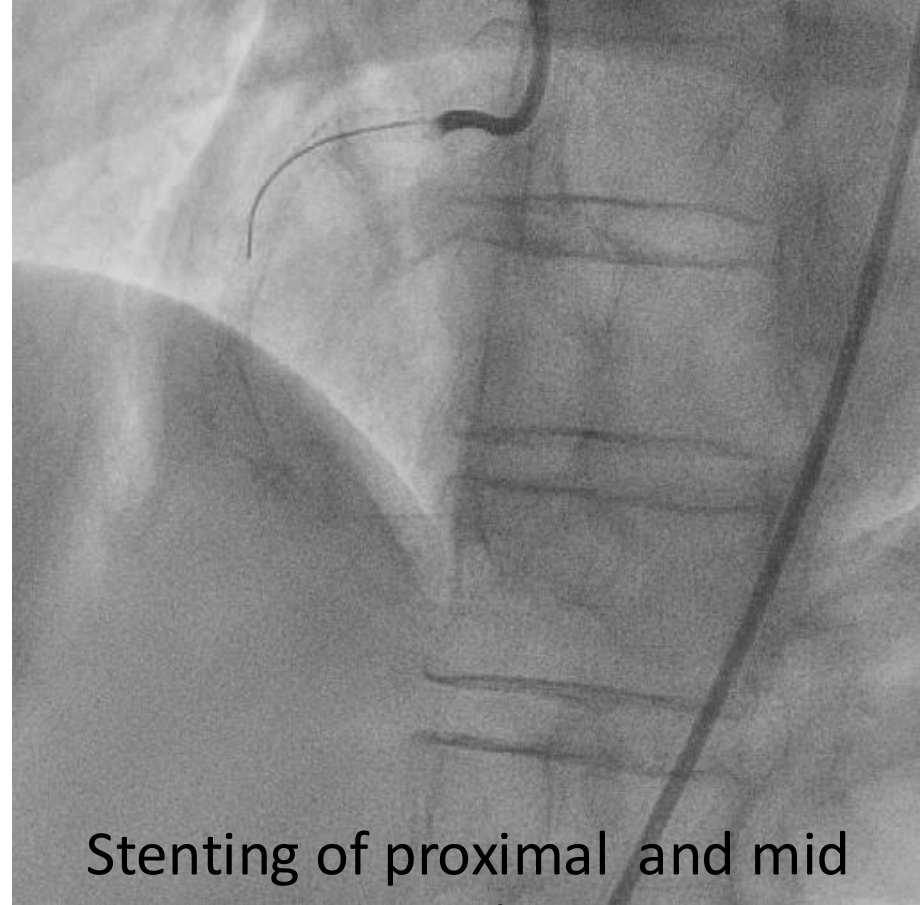
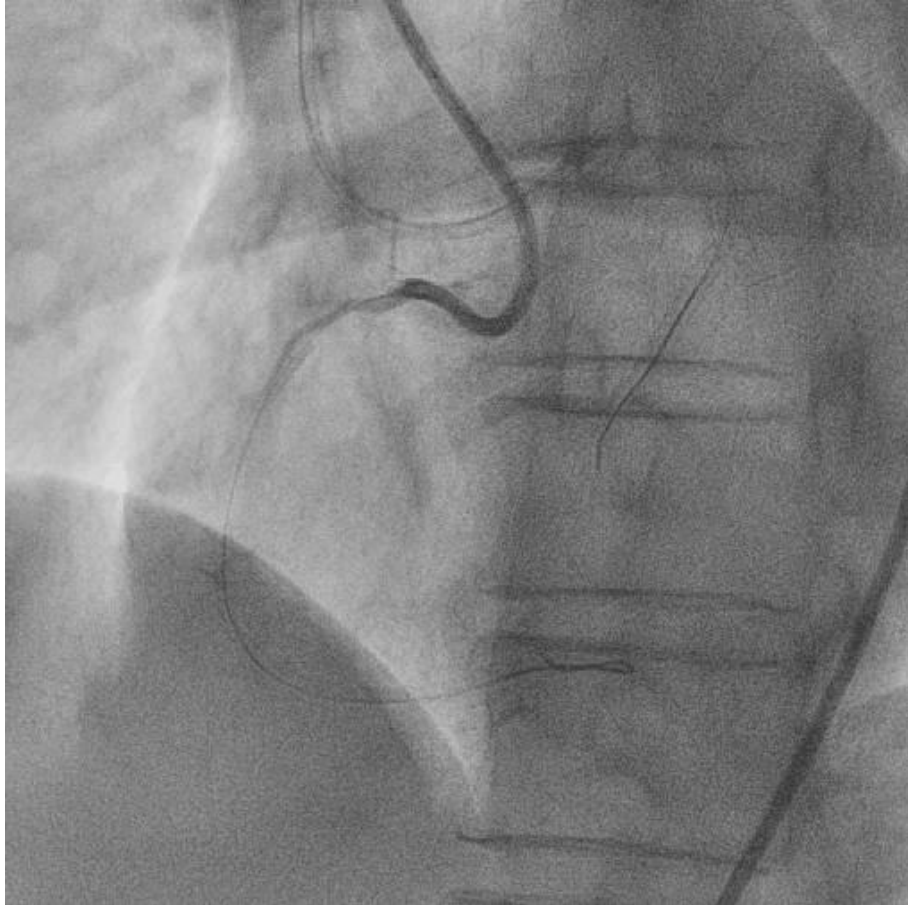


Gladius MG crossed to true
distal lumen

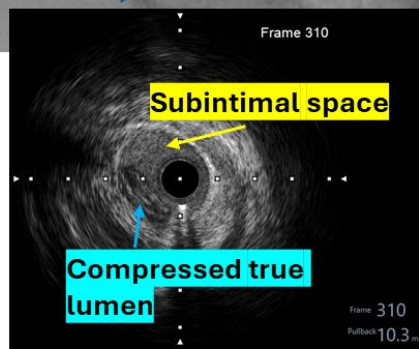
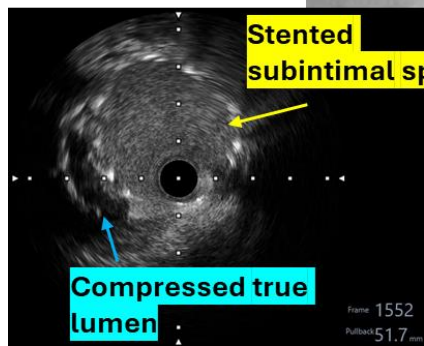
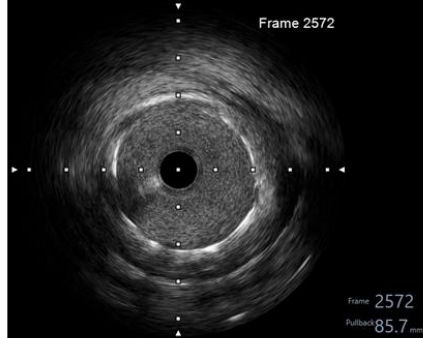
However

- Guidewire position lost when retrieving Sasuke
- Inability to regain position ...
- Large hematoma

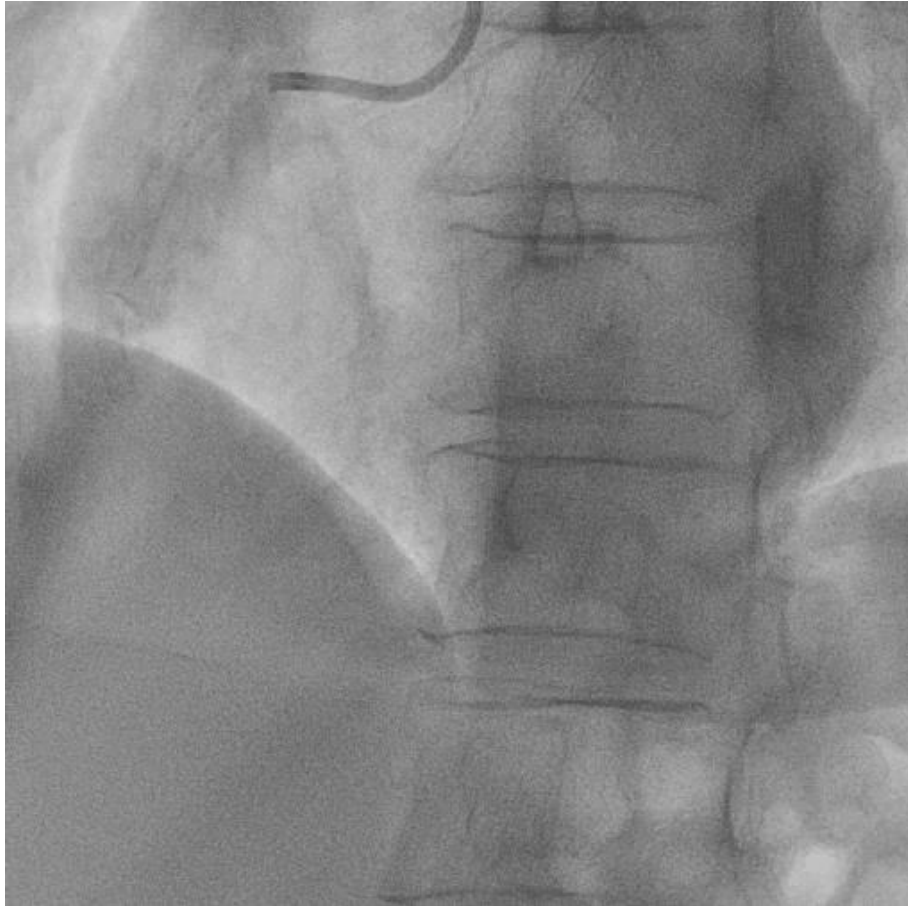
Investment



Stenting of proximal and mid
RCA to improve / maintain flow

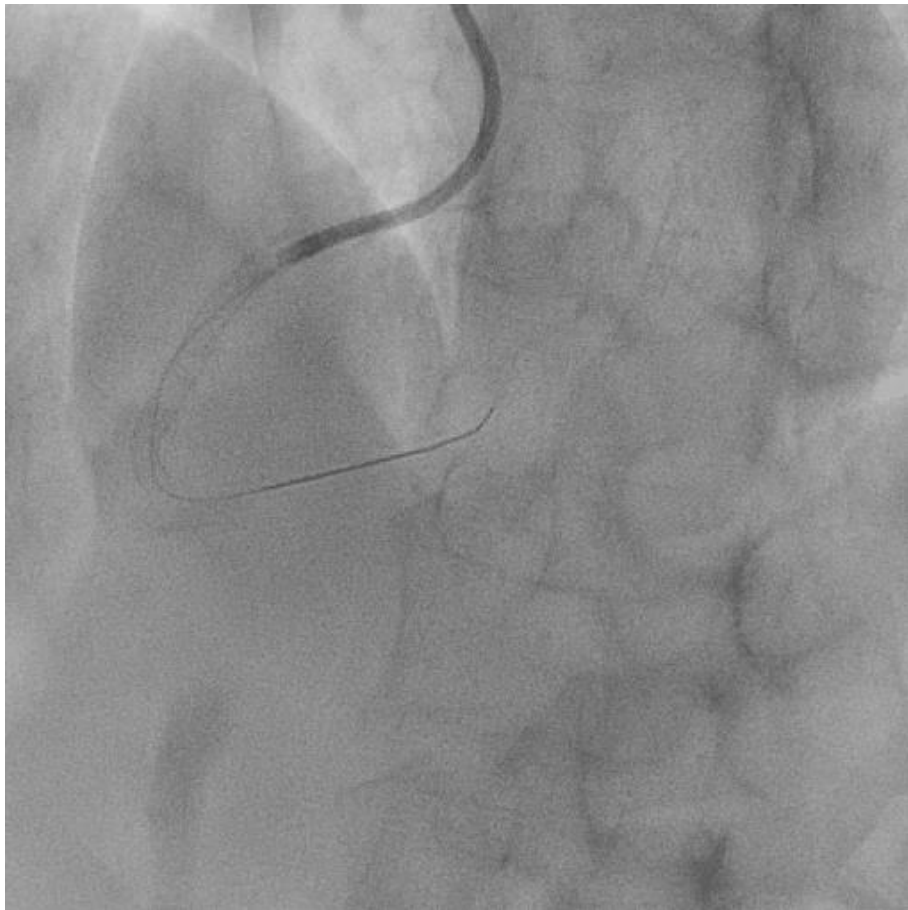


2 months (8 weeks) later ...

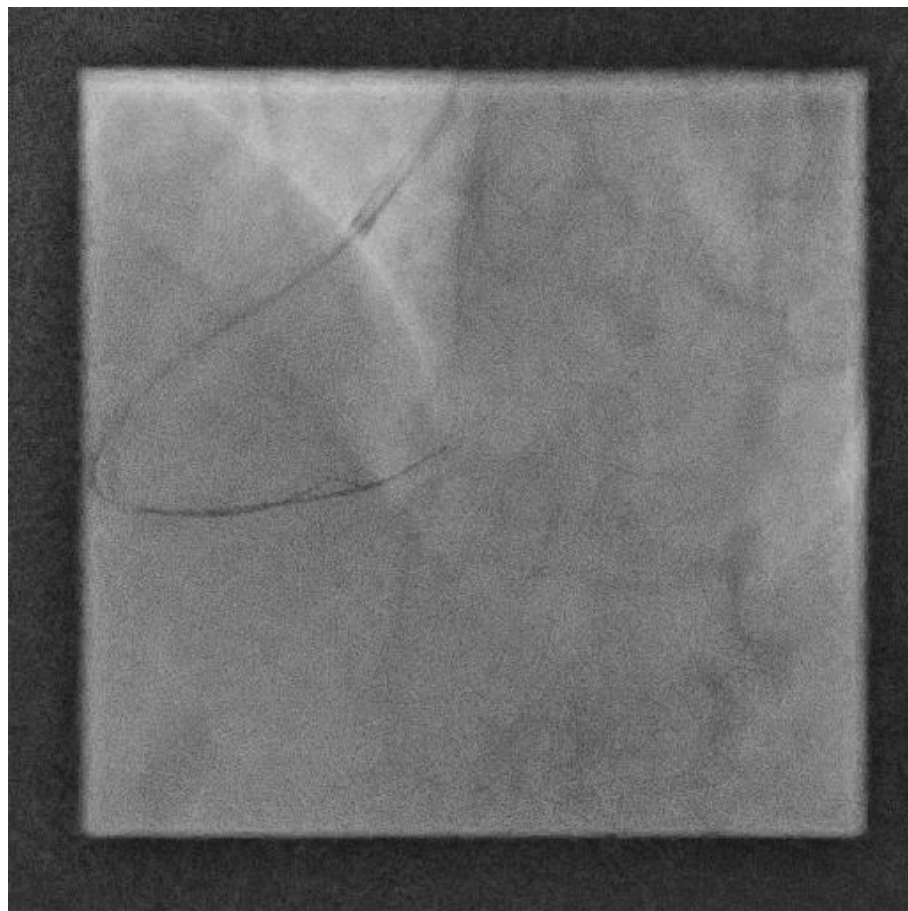


TIMI 3 flow in PL

Failure to cross !!!!

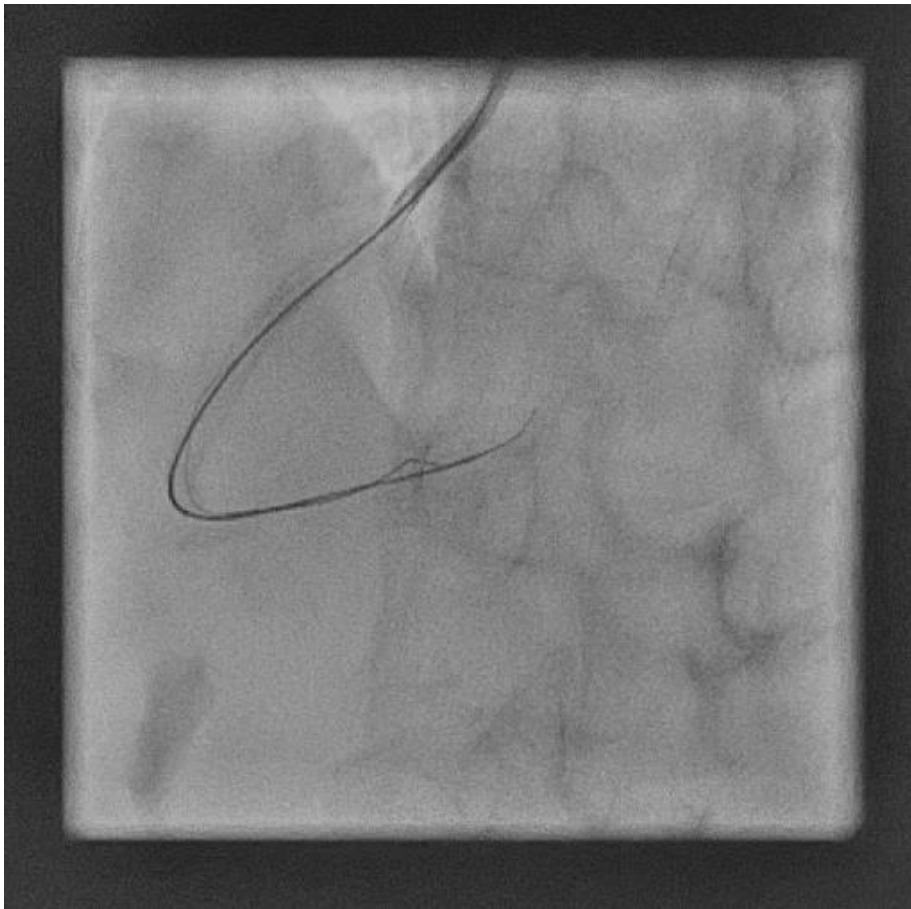


Sion Blue

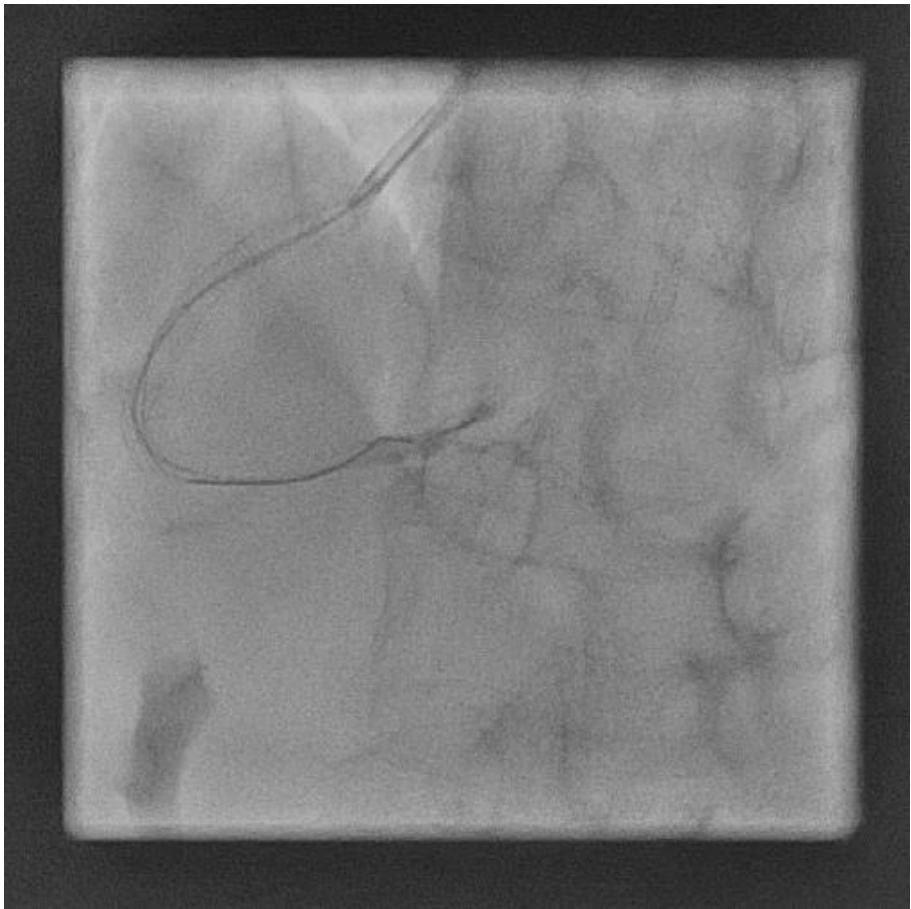


Caravel, SUOH03

Failure to cross and flow impairment

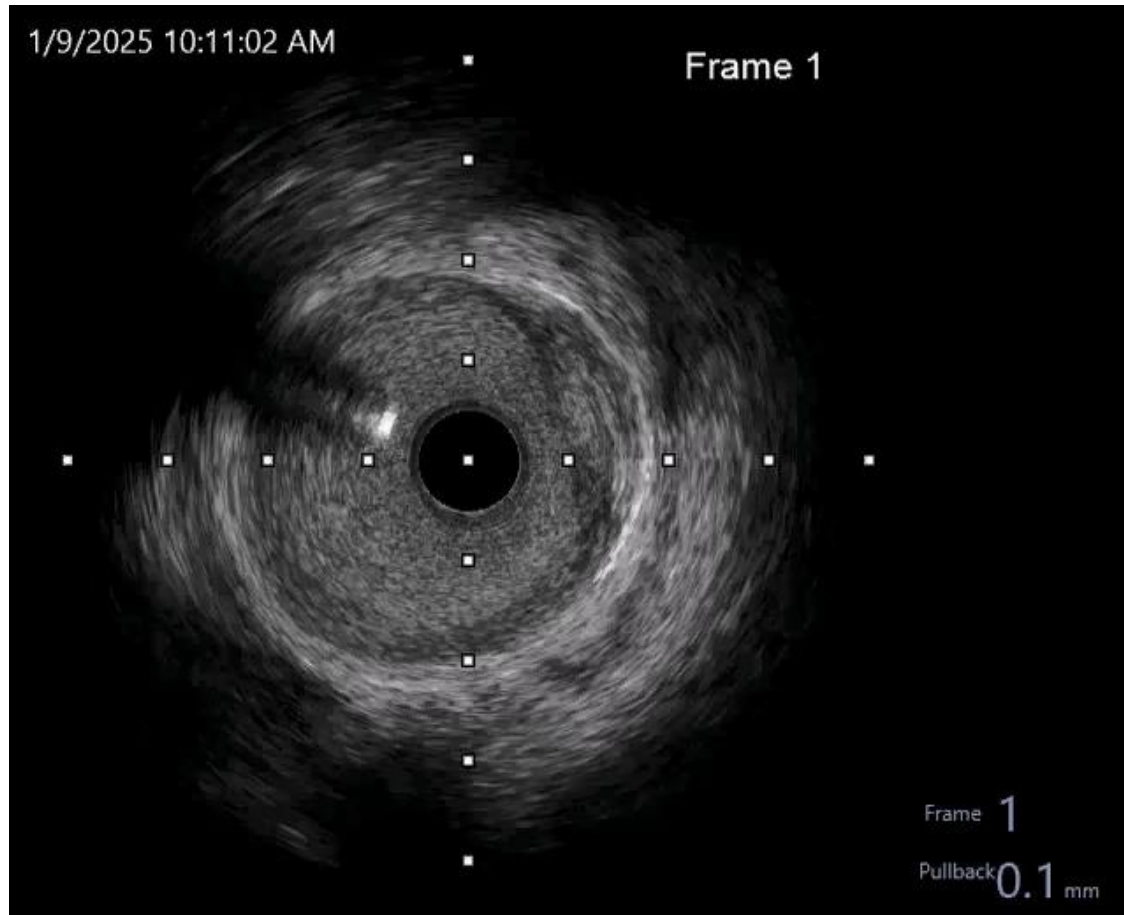


Caravel, Gaia 2

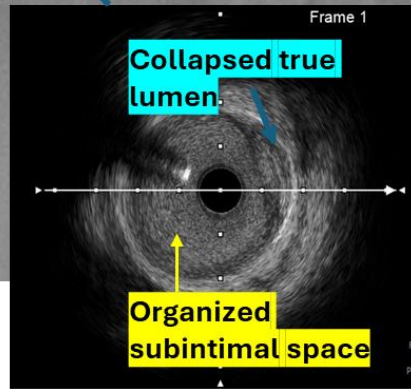
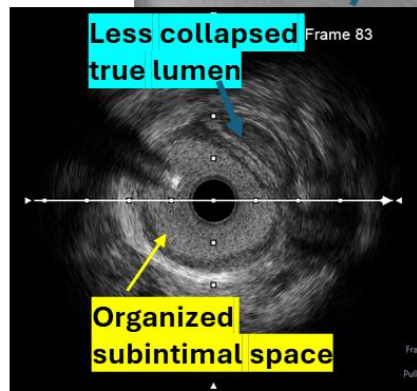
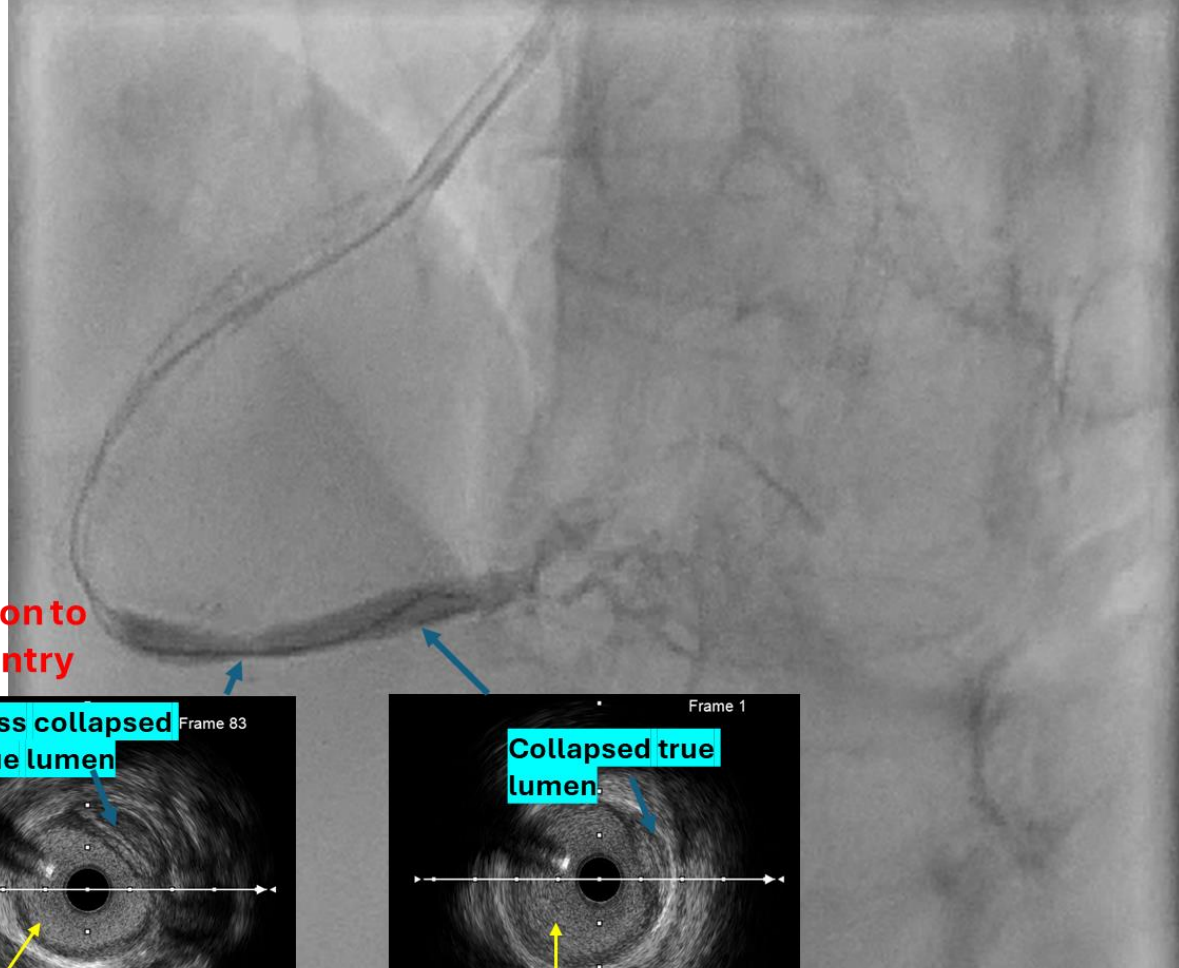


Flow impairment

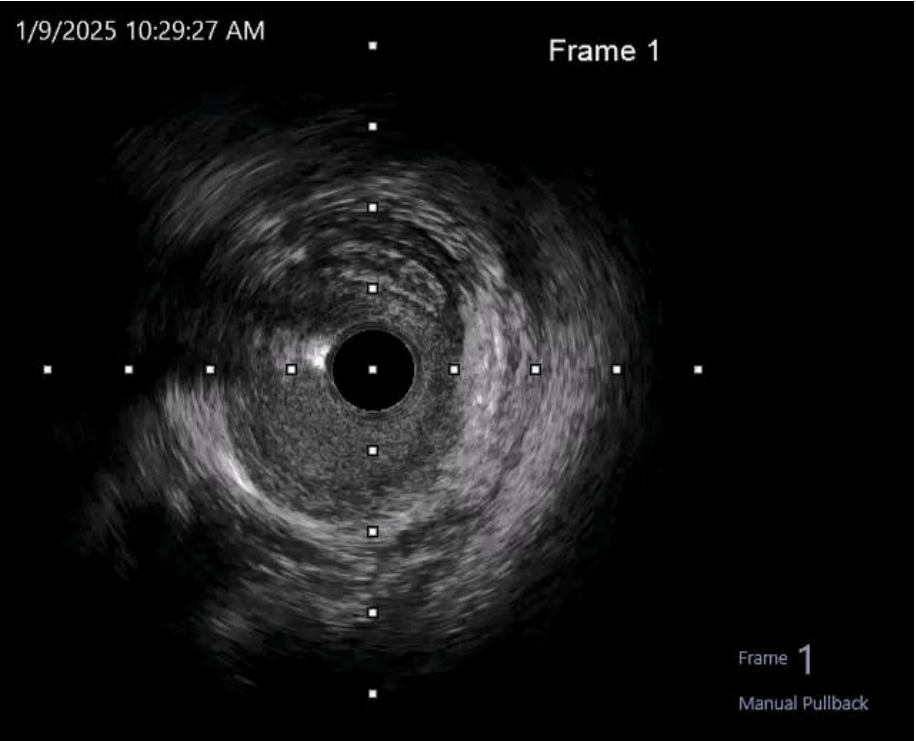
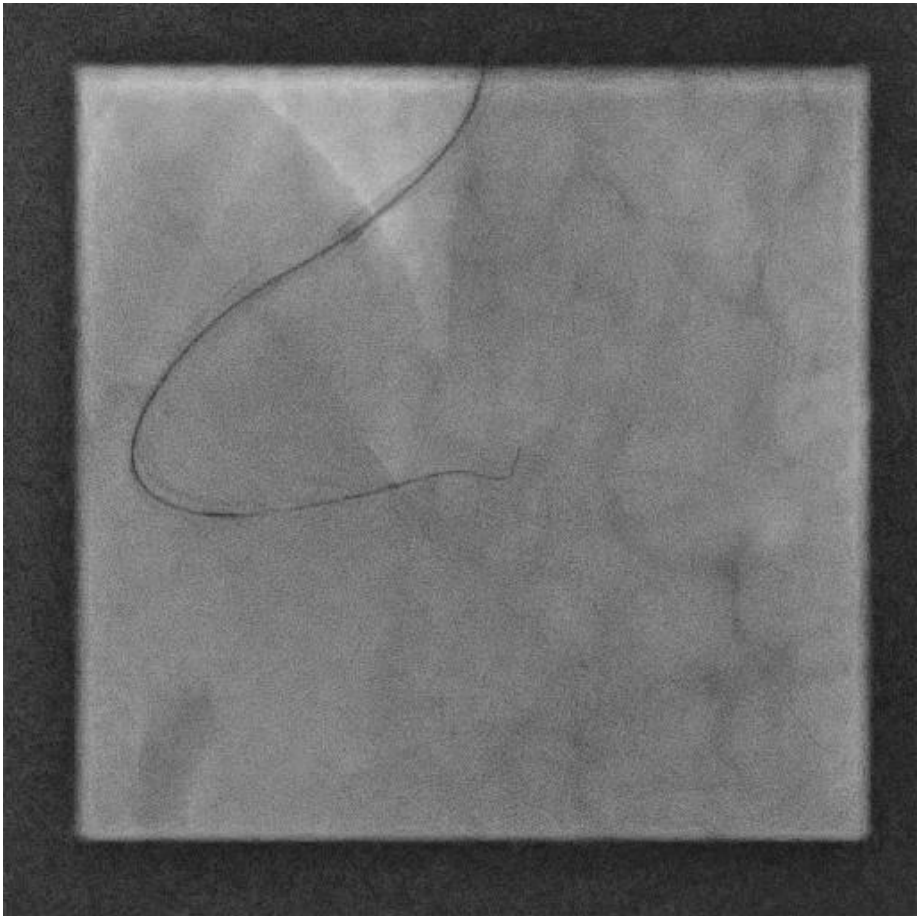
IVUS assessment



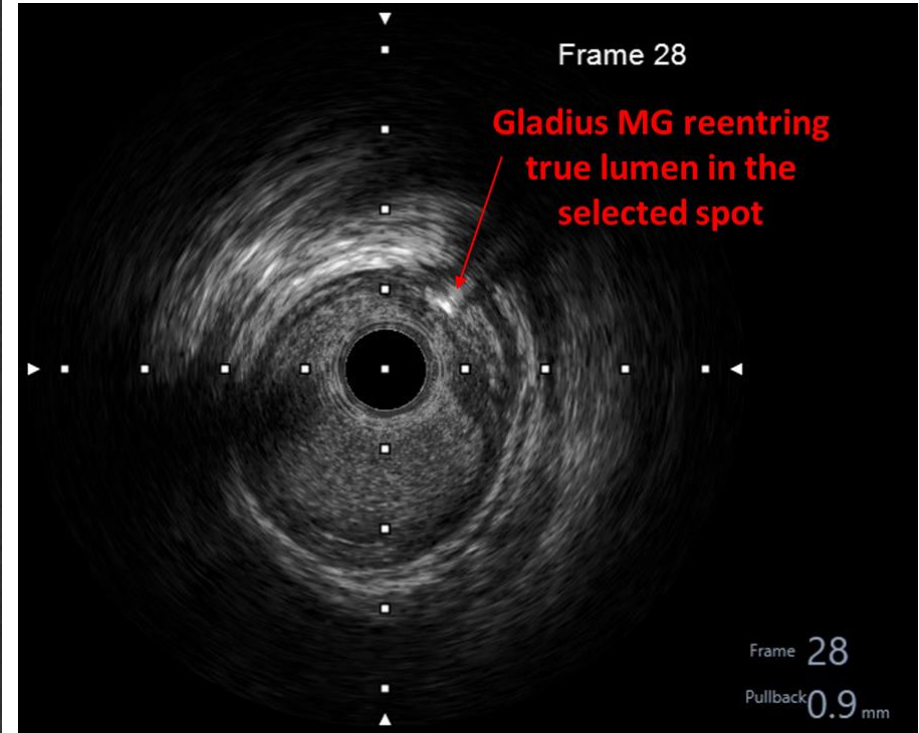
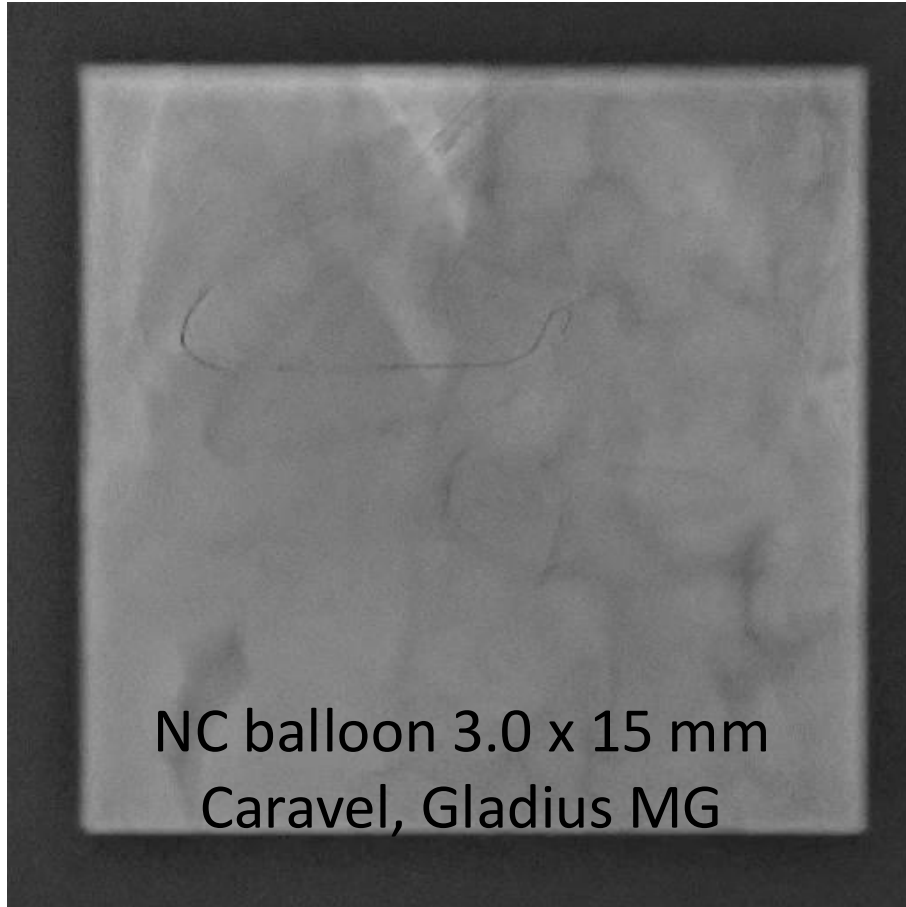
Better position to attempt reentry



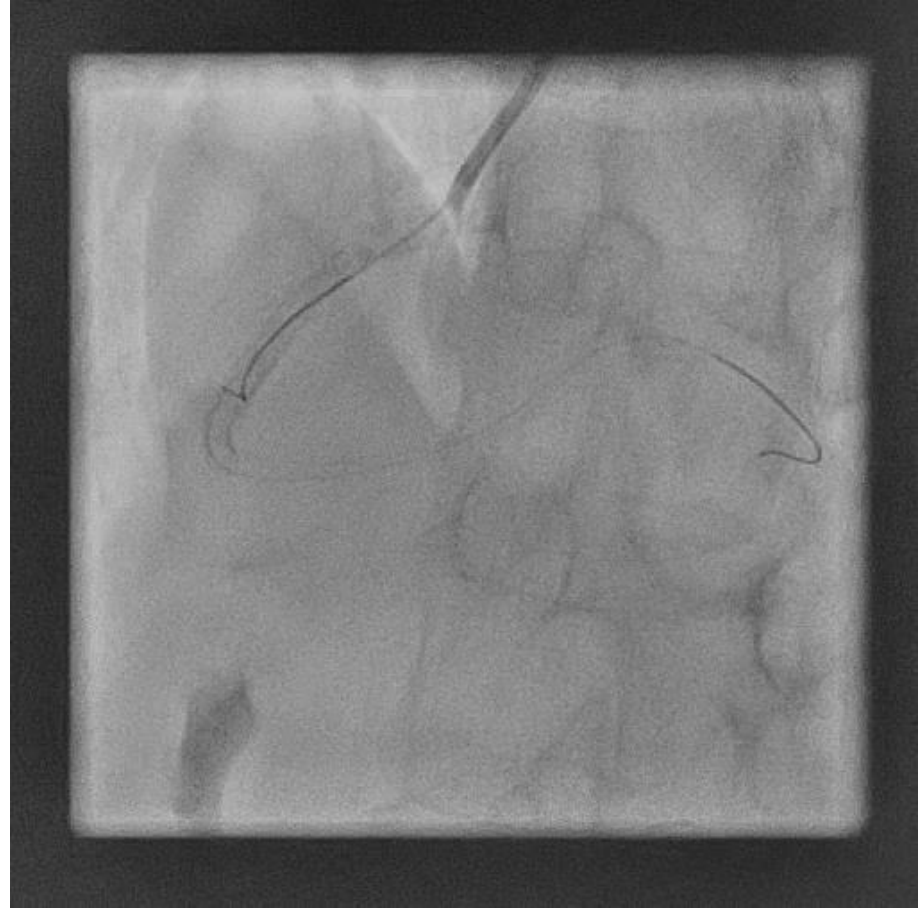
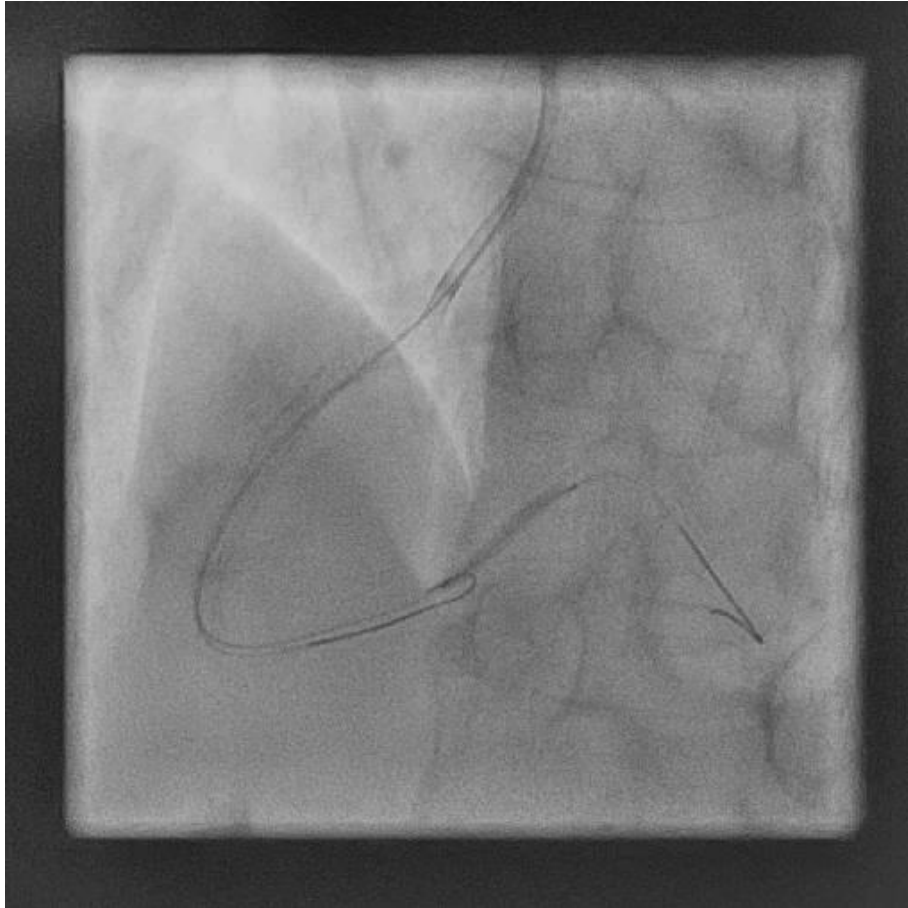
Failed attempt of IVUS guided reentry



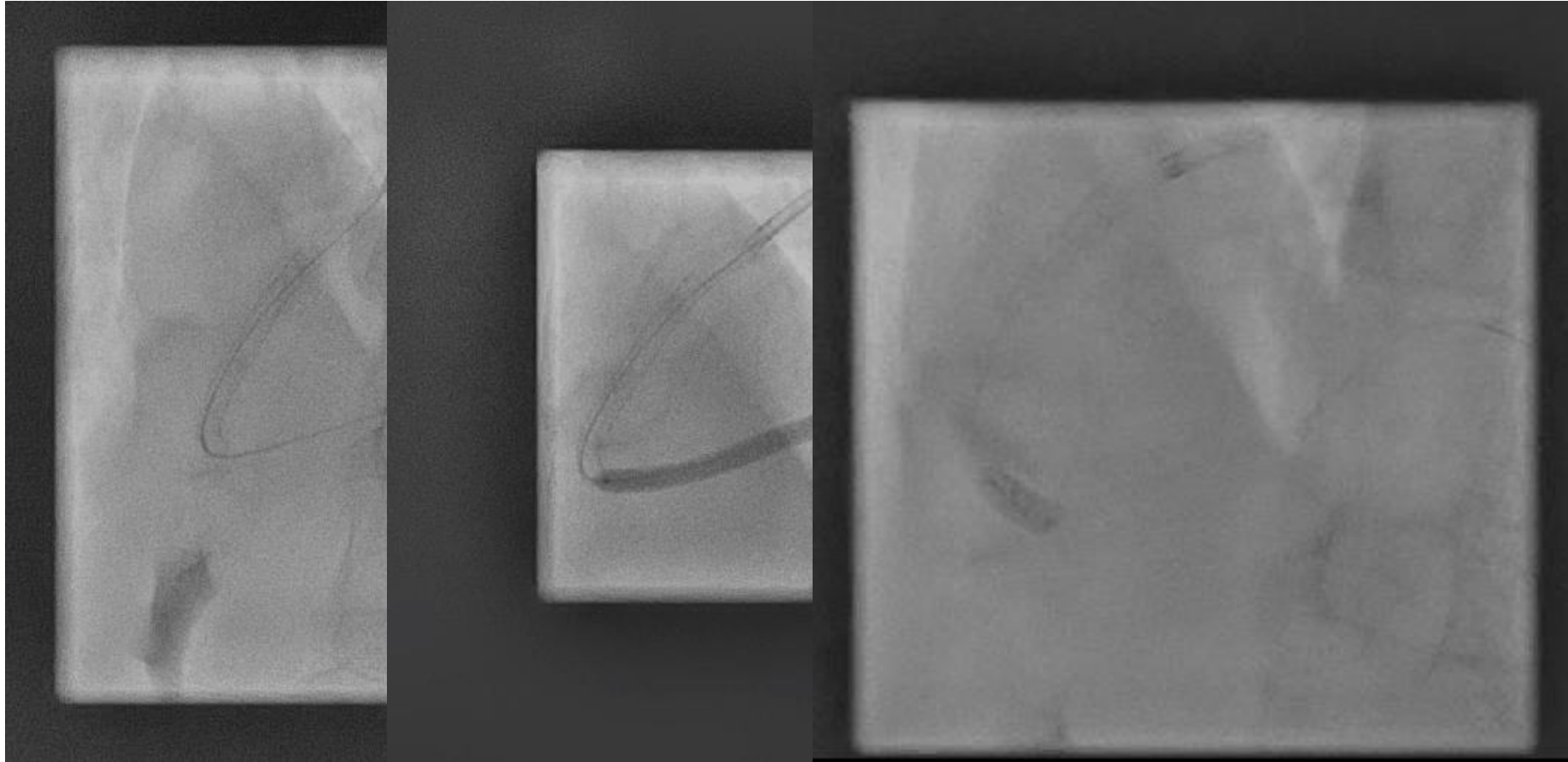
Antegrade fenestration reentry (AFR) in the position selected by IVUS



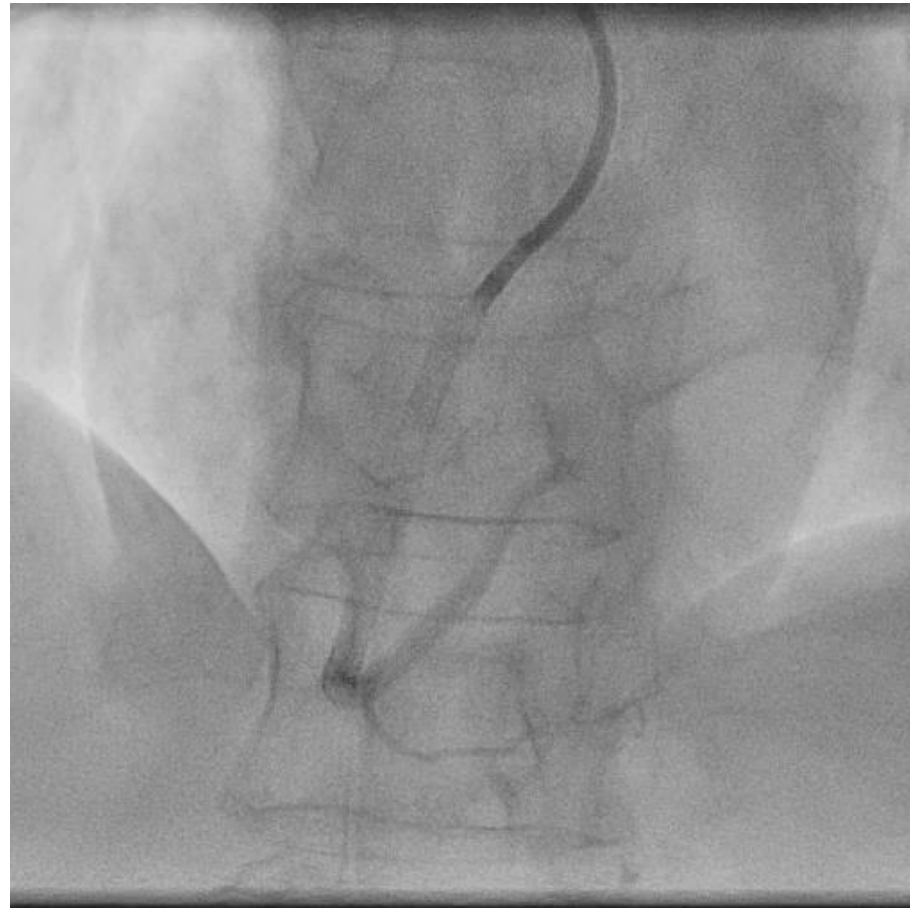
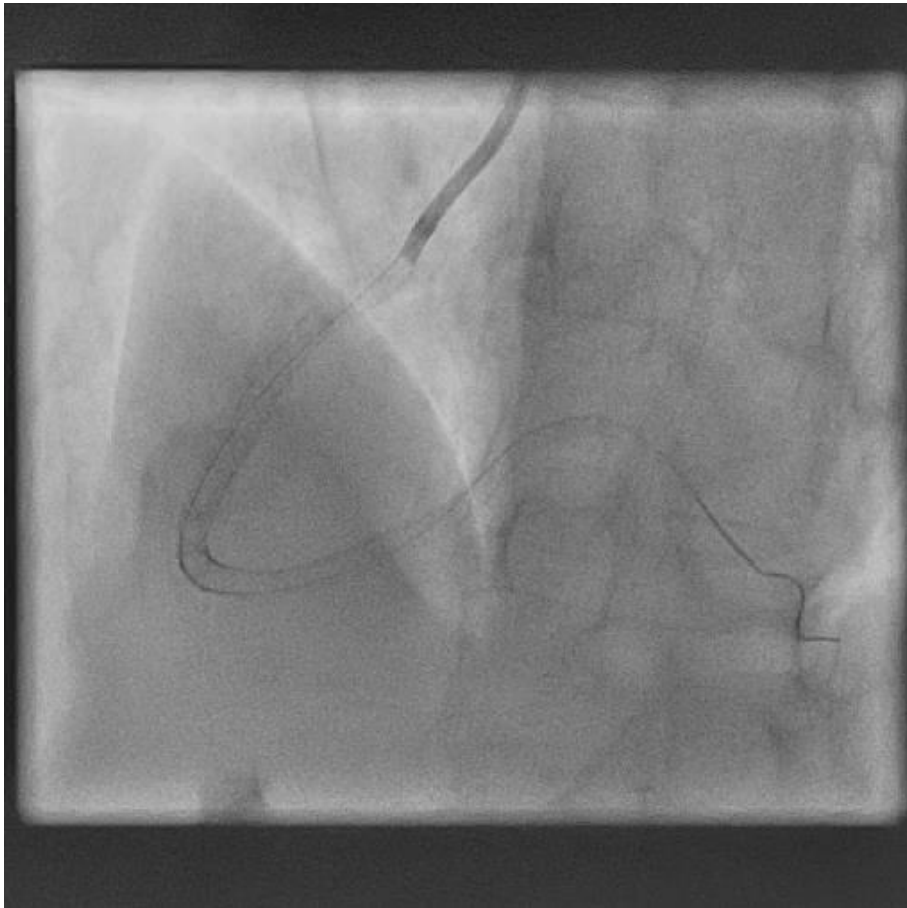
Predilation



3 DES implantation



Final result



Take Home Messages

- Better avoid extensive ballooning in case of investment procedures, particularly distally to the CTO
- In absence of clear algorithm, IVUS assessment when reattempting CTO PCI is key to determine the strategy to adopt after investment
- AFR could be a valuable option to reenter true lumen even 2 months after investment procedure
- IVUS might help in the selection of the appropriate location where reentry could be attempted